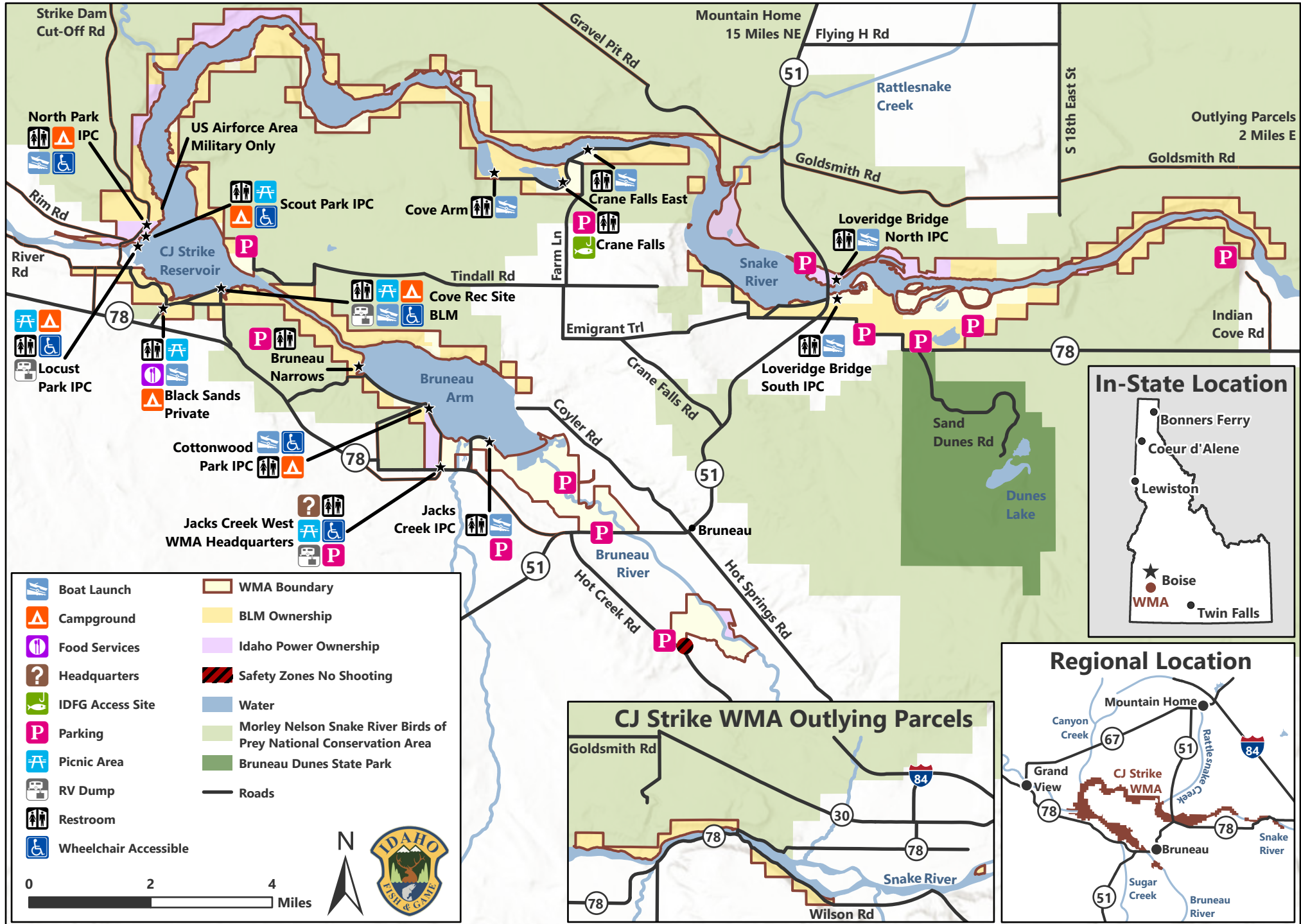
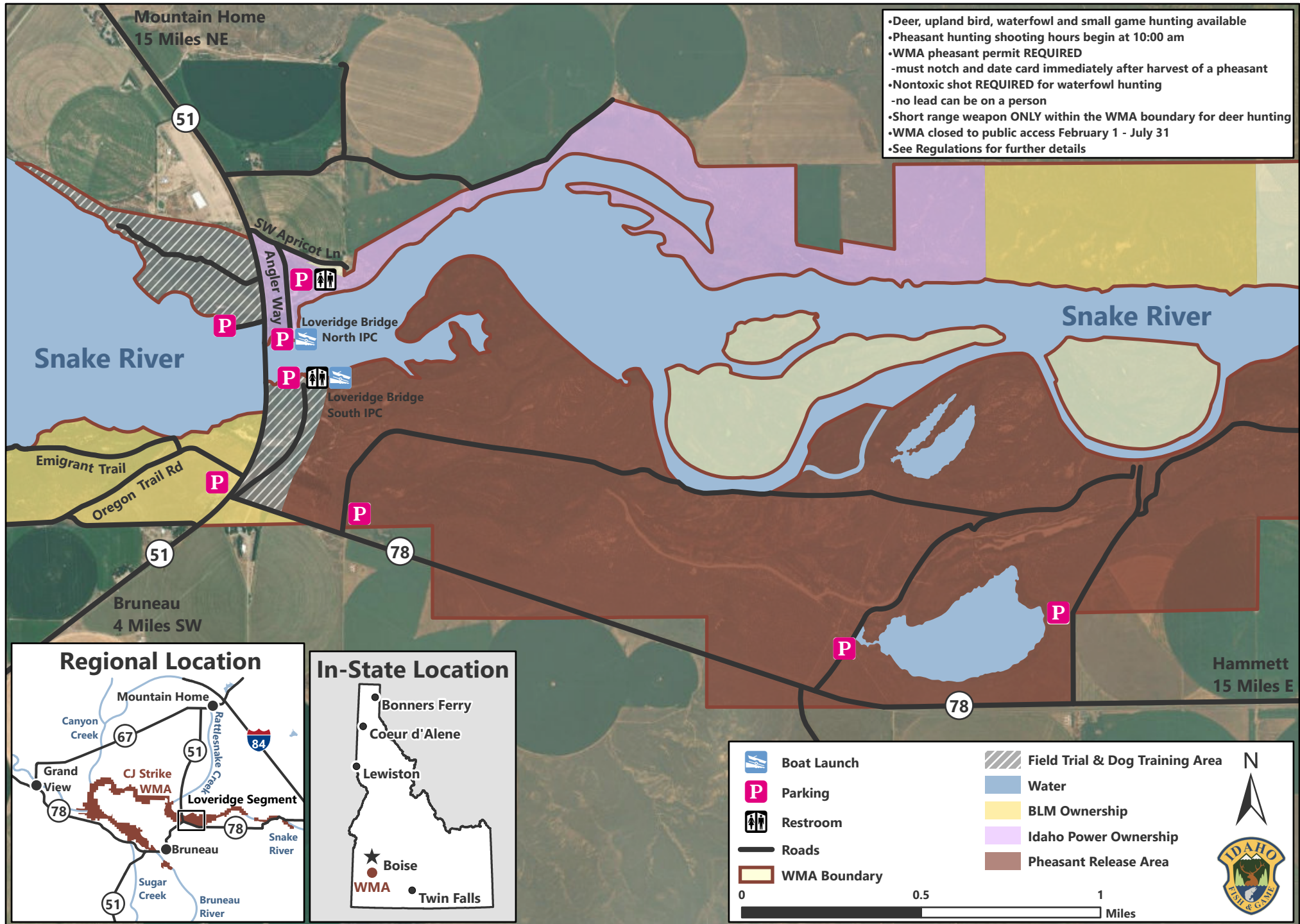


CJ Strike Wildlife Management Area

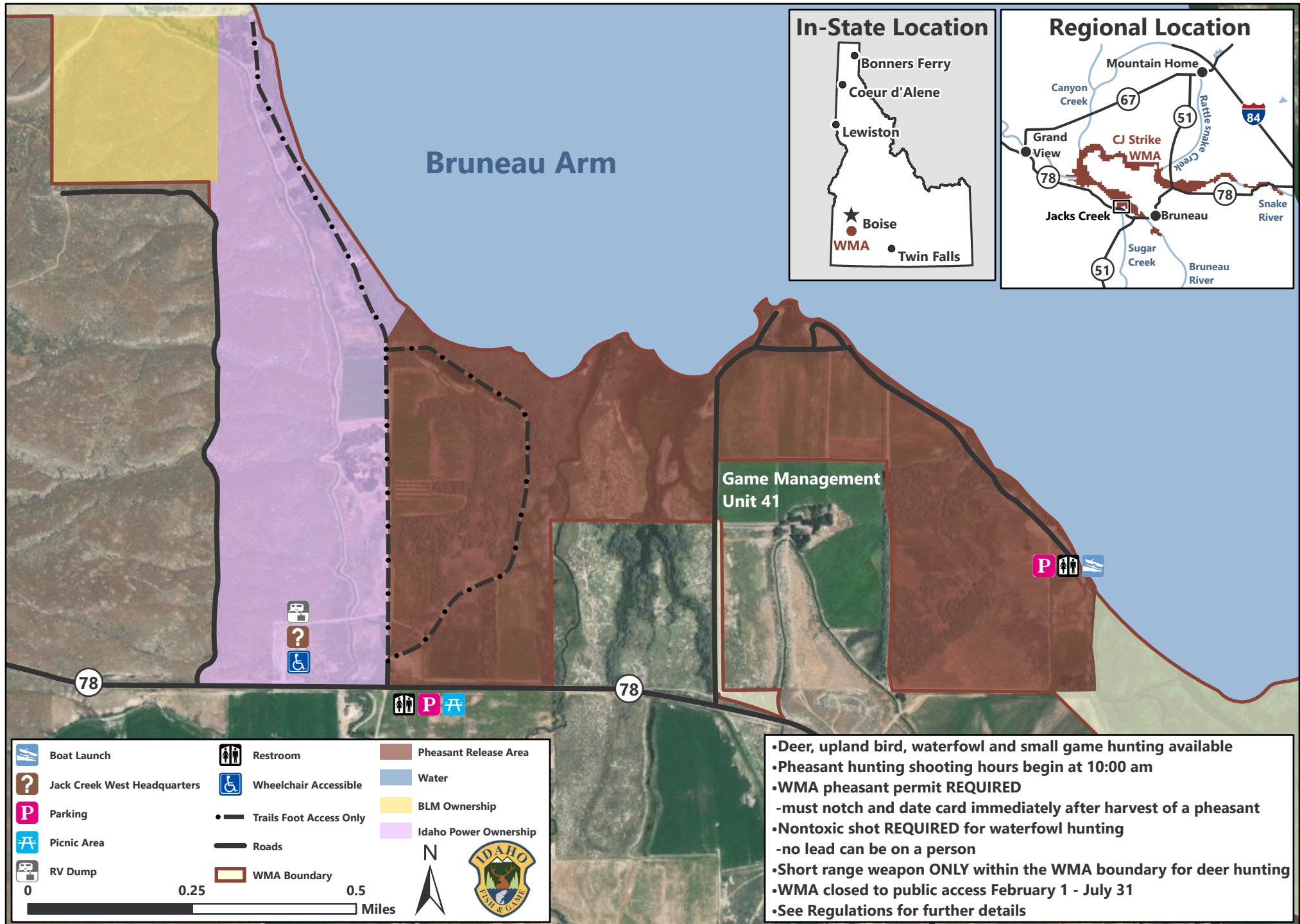
CJ Strike WMA is cooperatively managed by Idaho Dept. of Fish and Game and Idaho Power Company



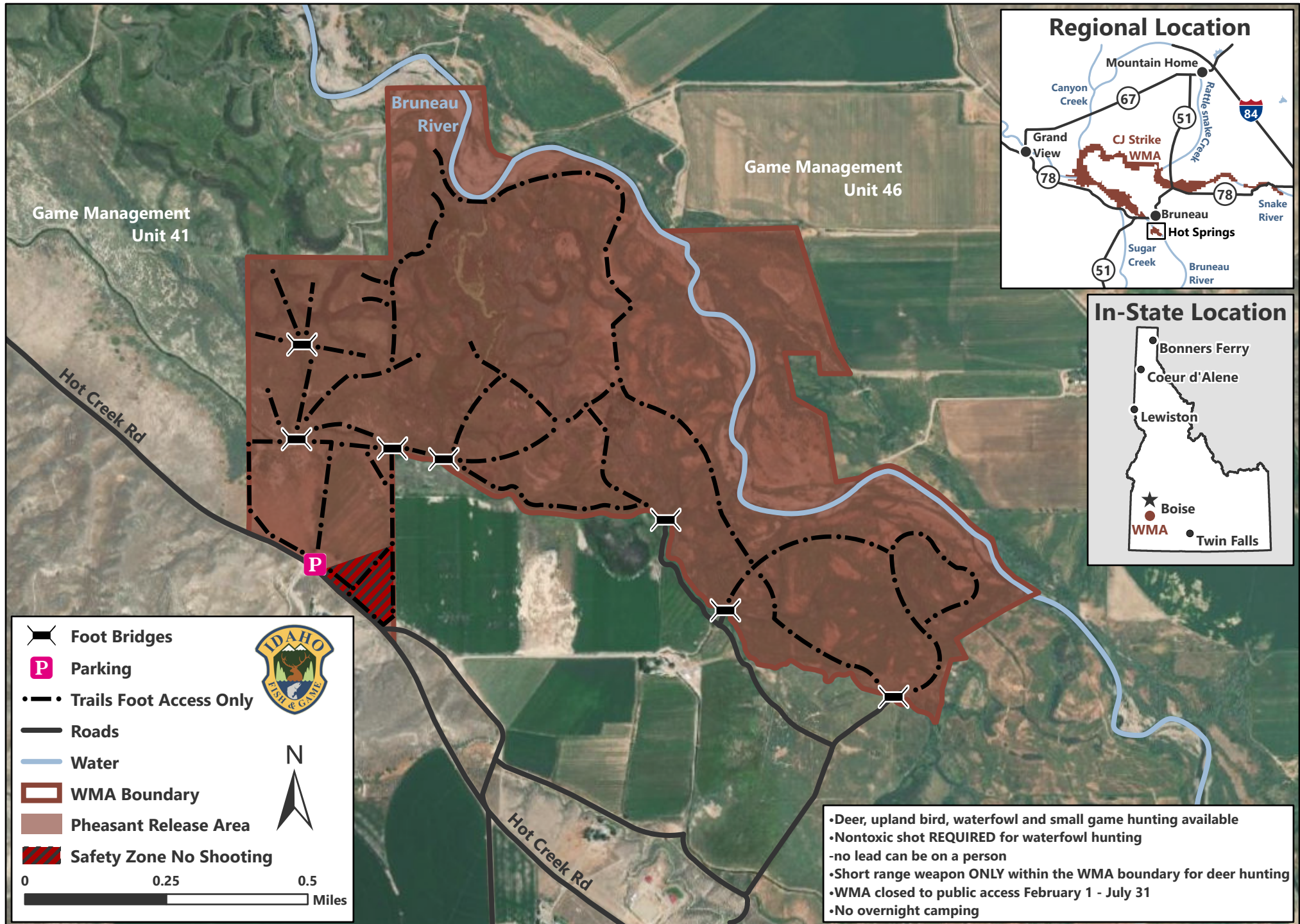
Loveridge Segment at CJ Strike Wildlife Management Area



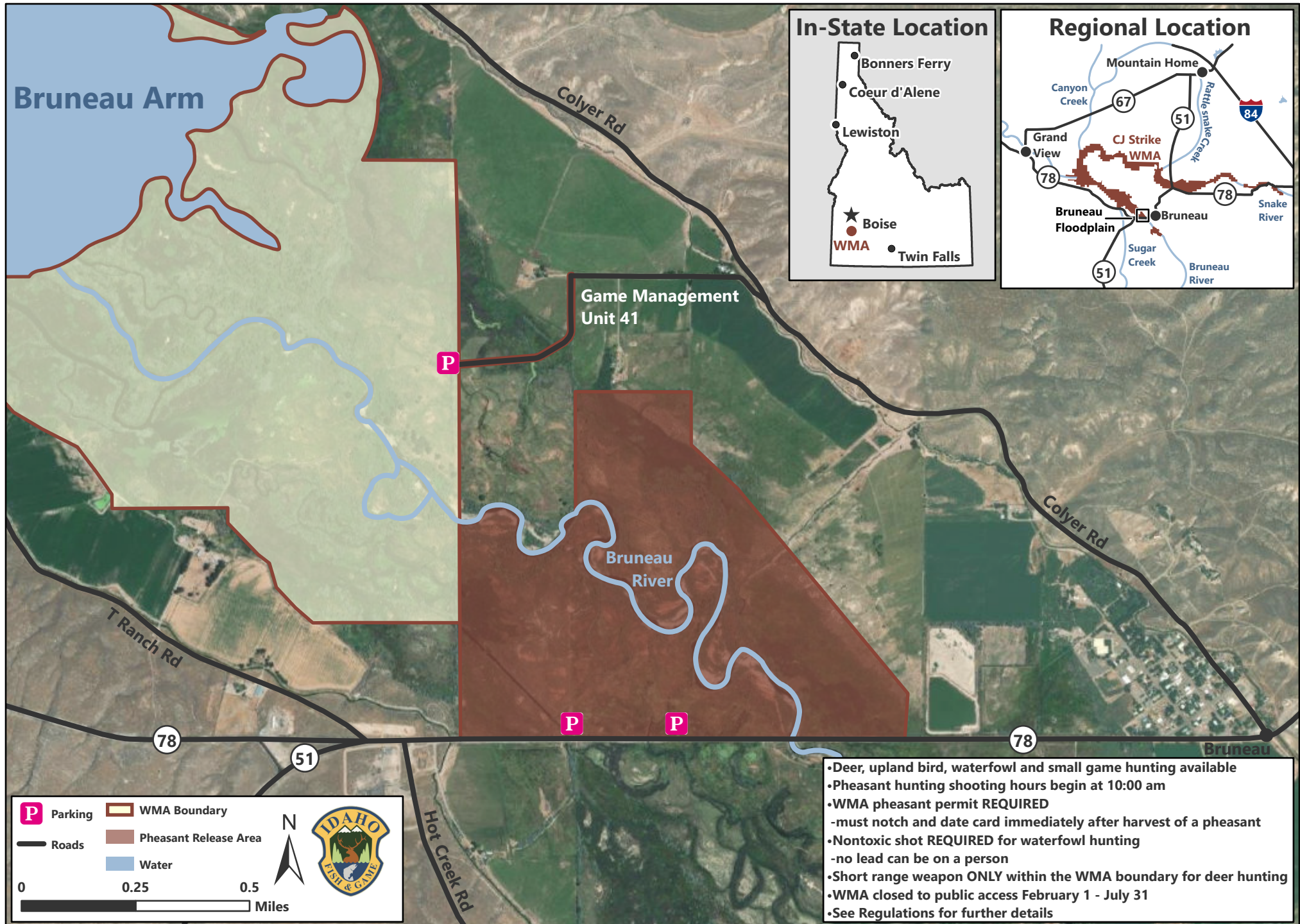
Jacks Creek at CJ Strike Wildlife Management Area



Hot Springs at CJ Strike Wildlife Management Area



Bruneau Floodplain at CJ Strike Wildlife Management Area



Ted Trueblood Wildlife Habitat Area

