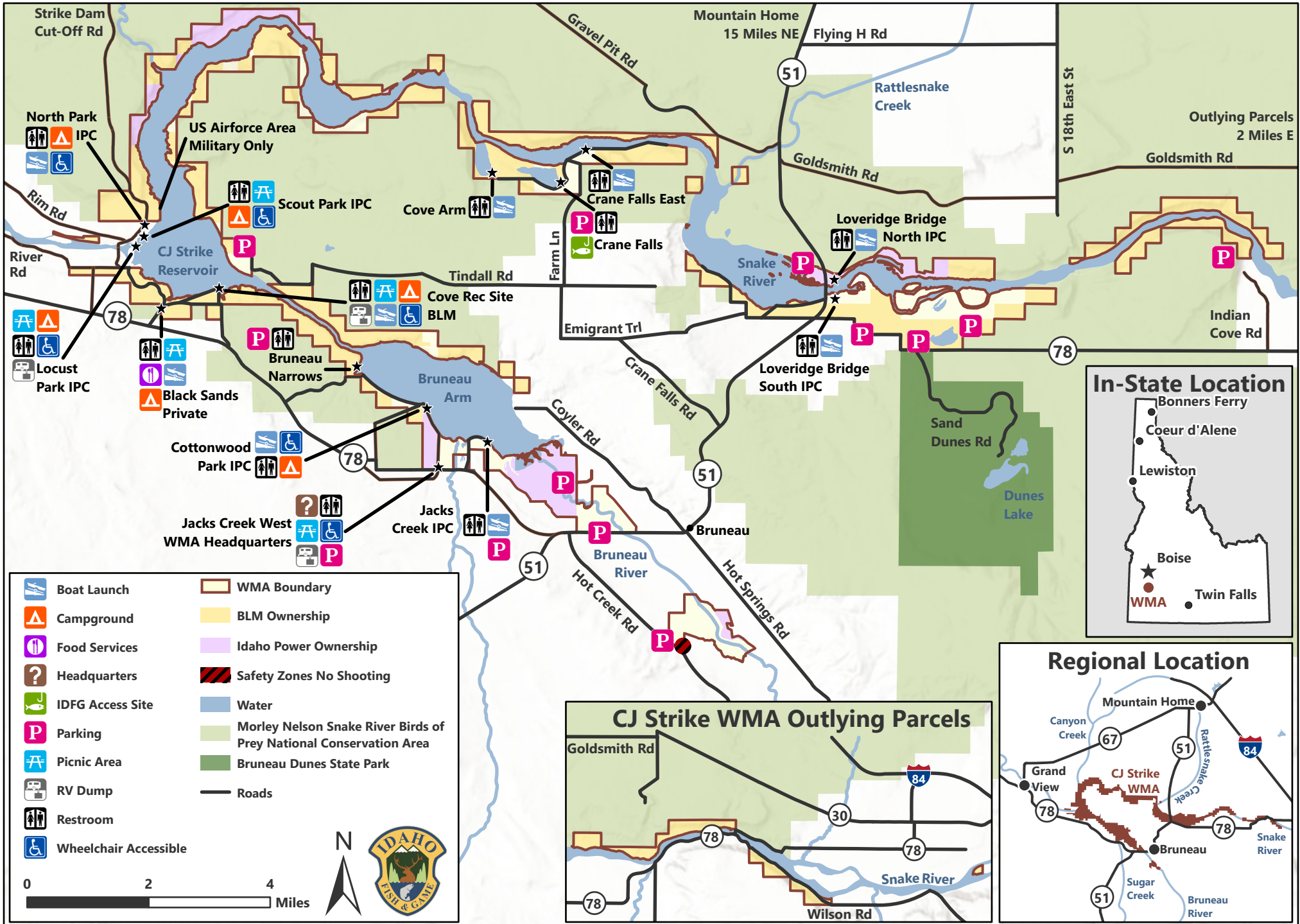


CJ Strike Wildlife Management Area

CJ Strike WMA is cooperatively managed by Idaho Dept. of Fish and Game and Idaho Power Company



	Boat Launch		WMA Boundary
	Campground		BLM Ownership
	Food Services		Idaho Power Ownership
	Headquarters		Safety Zones No Shooting
	IDFG Access Site		Water
	Parking		Morley Nelson Snake River Birds of Prey National Conservation Area
	Picnic Area		Bruneau Dunes State Park
	RV Dump		Roads
	Restroom		
	Wheelchair Accessible		

0 2 4 Miles

IDAHO
FISH & GAME

In-State Location

Bonnors Ferry
Coeur d'Alene
Lewiston
Boise
WMA
Twin Falls

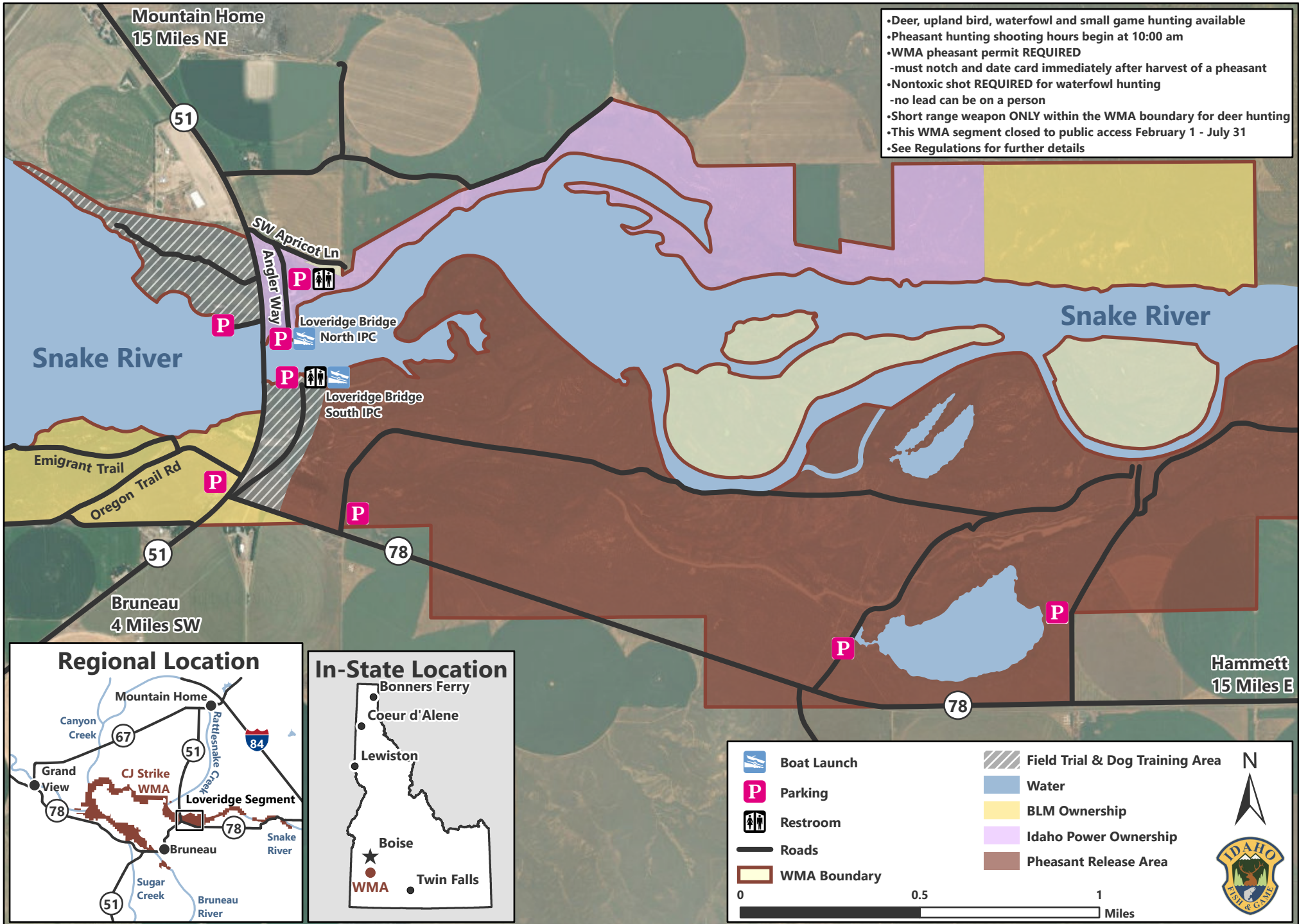
CJ Strike WMA Outlying Parcels

Goldsmith Rd
Snake River
Wilson Rd

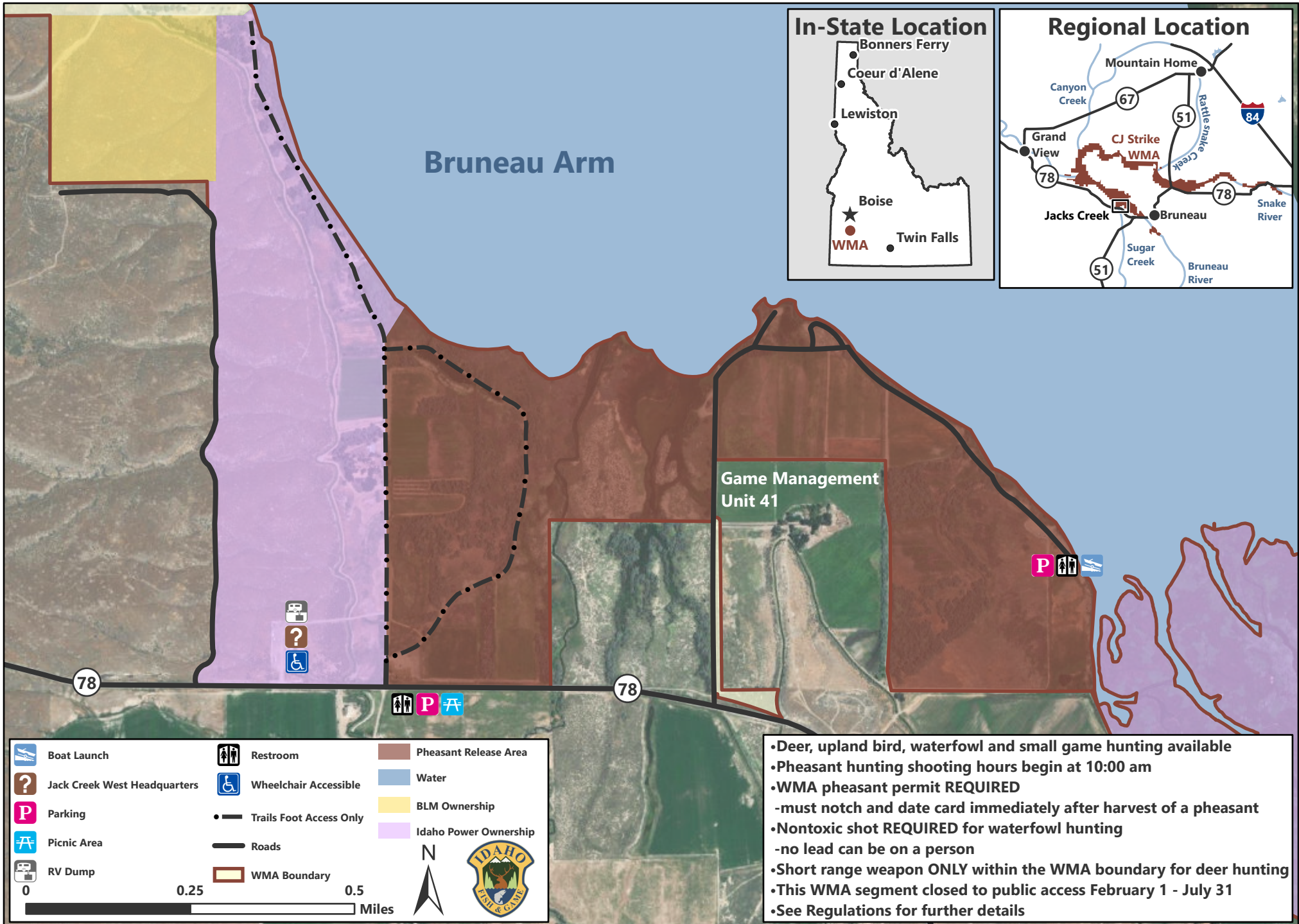
Regional Location

Mountain Home
Canyon Creek
Grand View
CJ Strike WMA
Bruneau
Sugar Creek
Snake River
Bruneau River

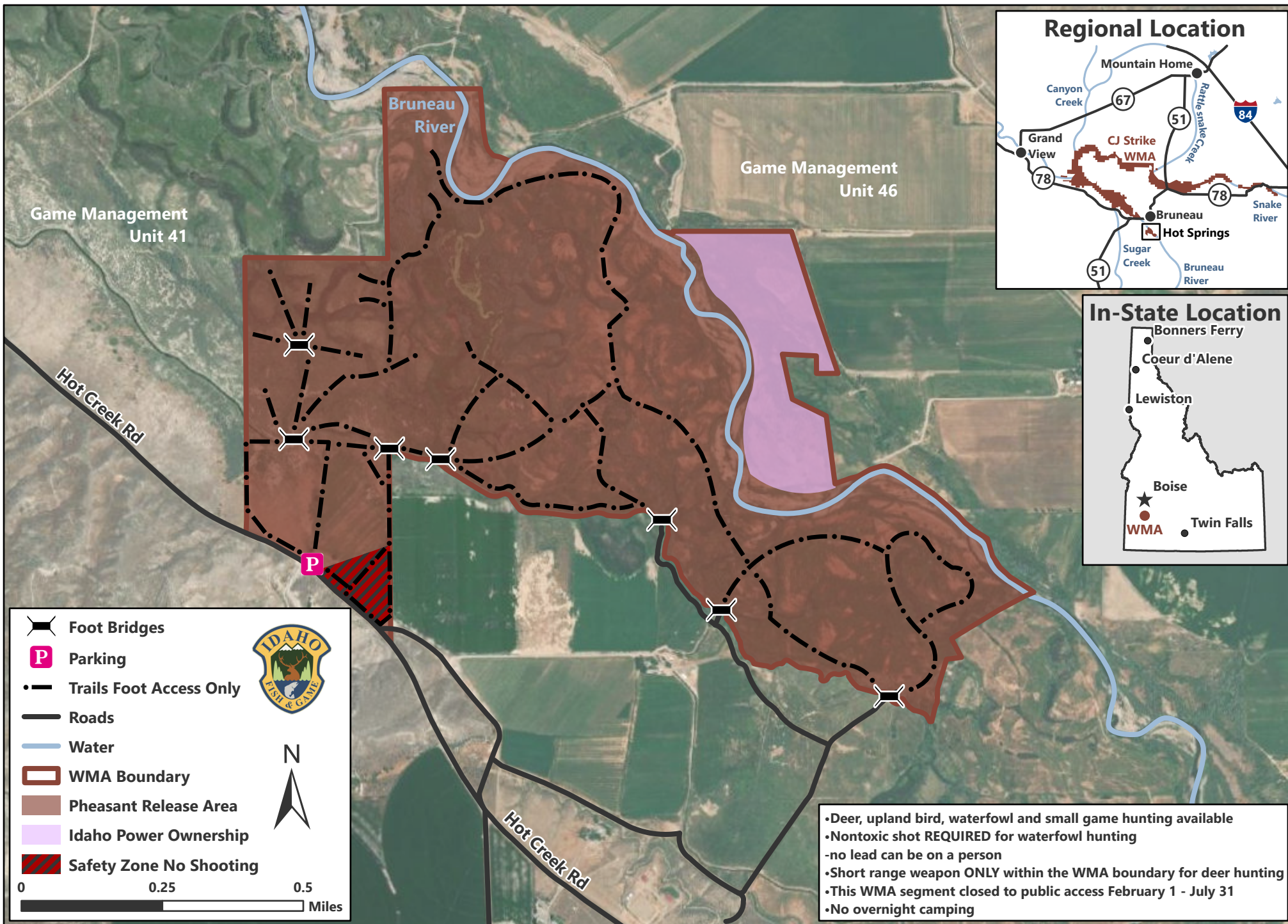
Loveridge Segment at CJ Strike Wildlife Management Area



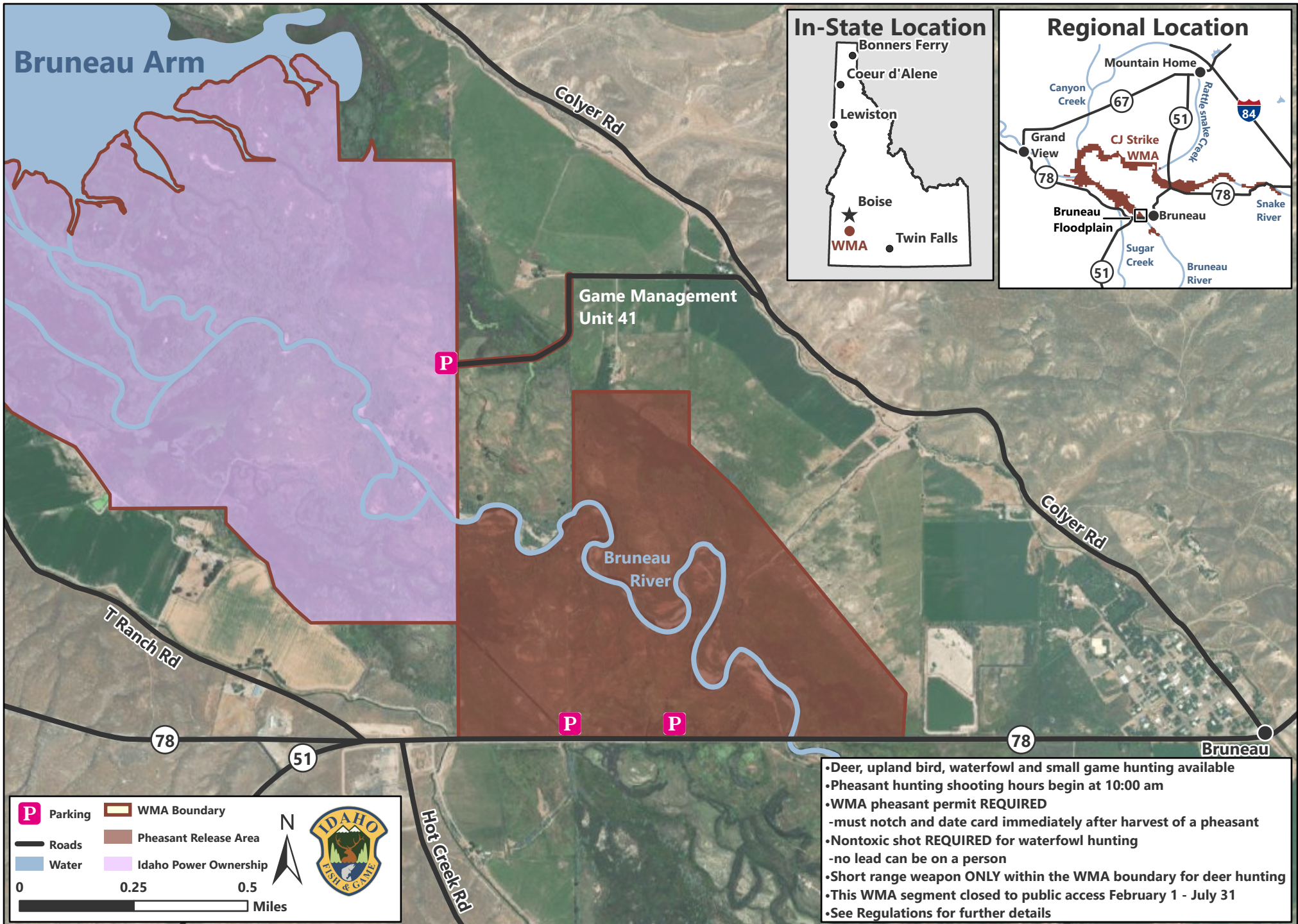
Jacks Creek at CJ Strike Wildlife Management Area



Hot Springs at CJ Strike Wildlife Management Area



Bruneau Floodplain at CJ Strike Wildlife Management Area



In-State Location

Map showing the location of the Wildlife Management Area (WMA) within Idaho. Key locations marked include Bonners Ferry, Coeur d'Alene, Lewiston, Boise (marked with a star), and Twin Falls.

Regional Location

Map showing the regional context of the WMA. Key features include Canyon Creek, Snake River, Bruneau River, Sugar Creek, and the town of Bruneau. Major roads shown are US-78, US-51, and I-84. Other nearby locations are Grand View and Mountain Home.

P Parking

— Roads

Water

WMA Boundary

Pheasant Release Area

Idaho Power Ownership

0 0.25 0.5 Miles

IDAHO FISH & GAME

- Deer, upland bird, waterfowl and small game hunting available
- Pheasant hunting shooting hours begin at 10:00 am
- WMA pheasant permit **REQUIRED**
- must notch and date card immediately after harvest of a pheasant
- Nontoxic shot **REQUIRED** for waterfowl hunting
- no lead can be on a person
- Short range weapon **ONLY** within the WMA boundary for deer hunting
- This WMA segment closed to public access February 1 - July 31
- See Regulations for further details