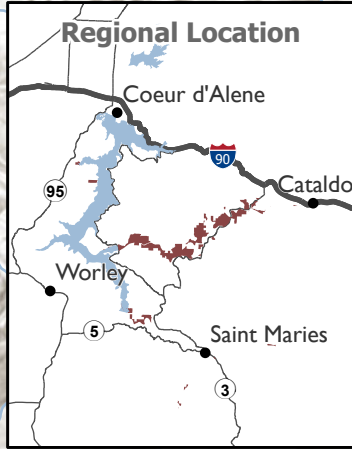
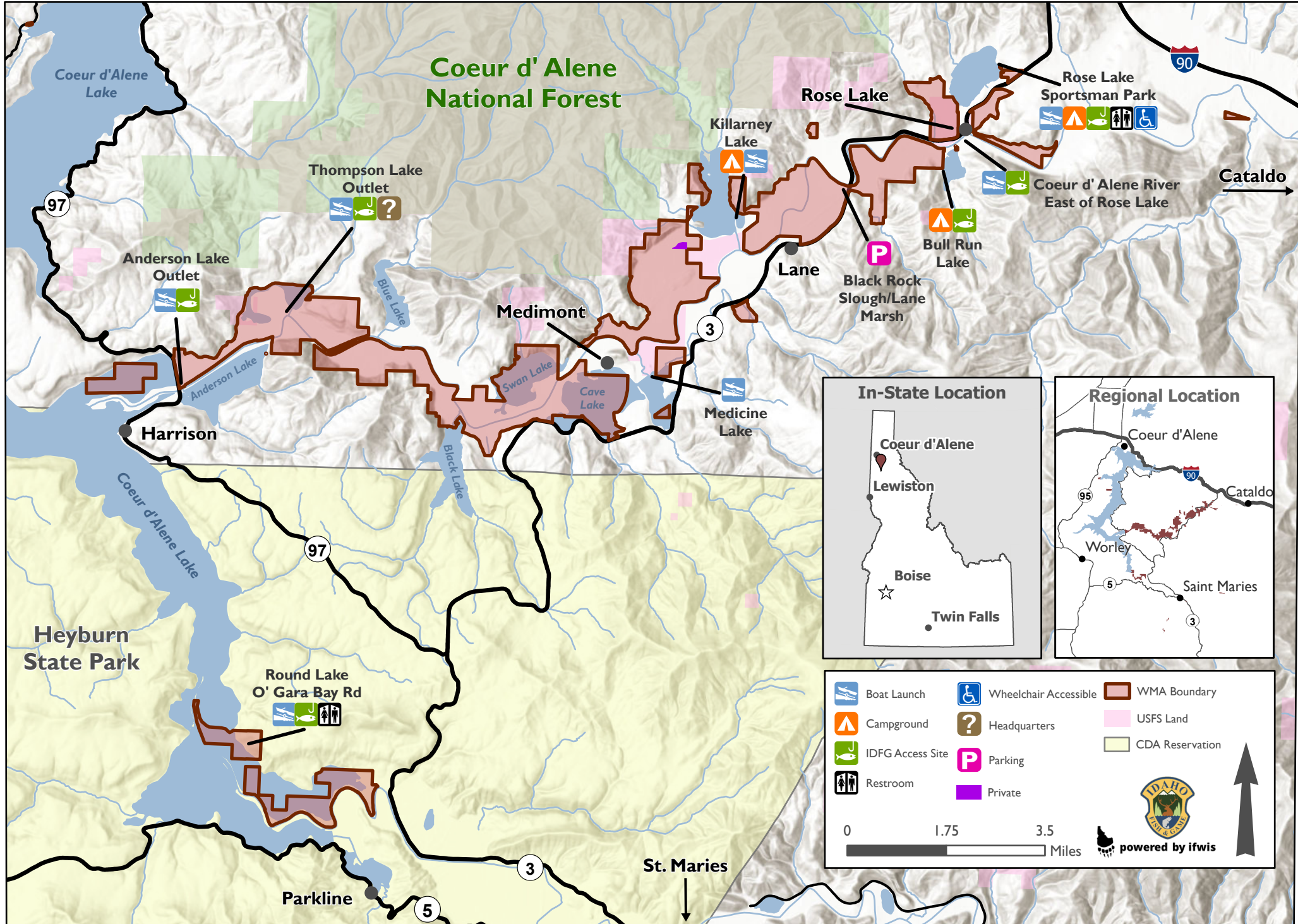


Coeur d'Alene River Wildlife Management Area

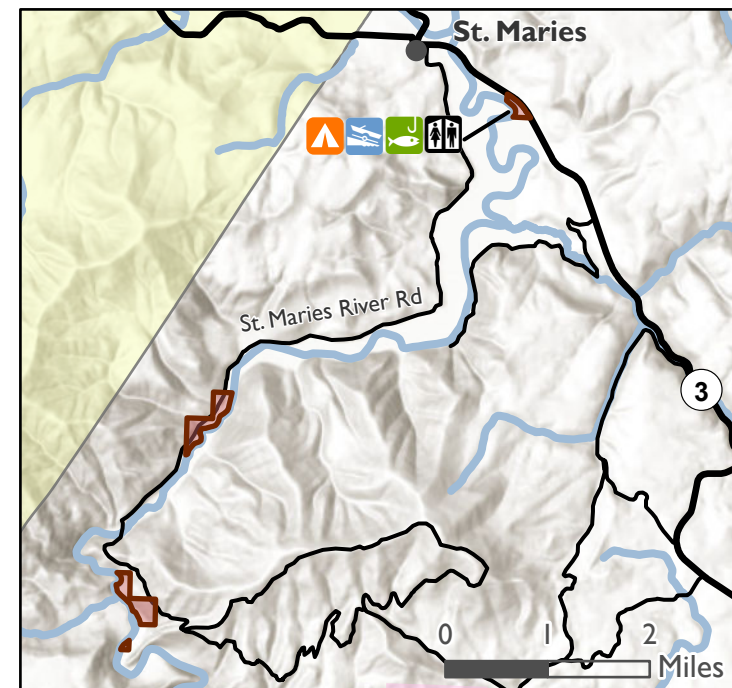
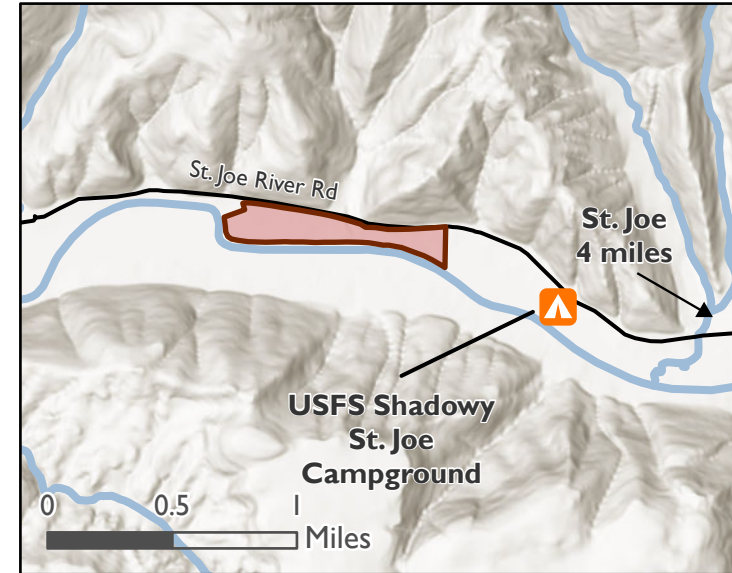
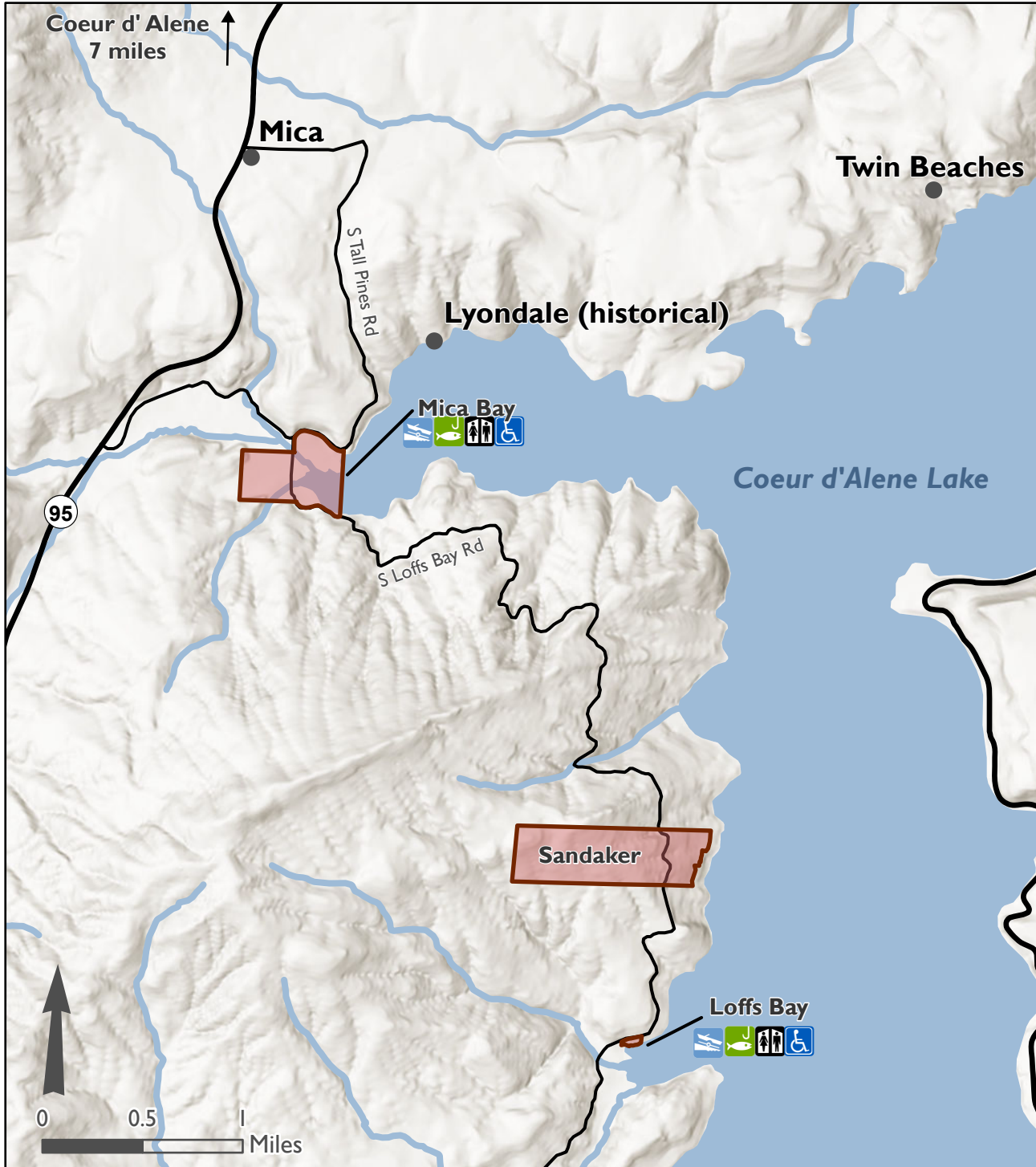


| | | | | | |
|--|------------------|--|-----------------------|--|-----------------|
| | Boat Launch | | Wheelchair Accessible | | WMA Boundary |
| | Campground | | Headquarters | | USFS Land |
| | IDFG Access Site | | Parking | | CDA Reservation |
| | Restroom | | Private | | |

0 1.75 3.5 Miles

powered by ifwis

Coeur d'Alene River WMA - Outlying Parcels



| | | | | | |
|--|------------------|--|-----------------------|--|-----------------|
| | Boat Launch | | Restroom | | Parking |
| | Campground | | Wheelchair Accessible | | WMA Boundary |
| | IDFG Access Site | | Headquarters | | CDA Reservation |