



UPLAND GAME ANIMALS RED SQUIRREL

Red Squirrel Seasons

2020 — August 30 through March 31, 2021

Daily Bag Limit..... 8

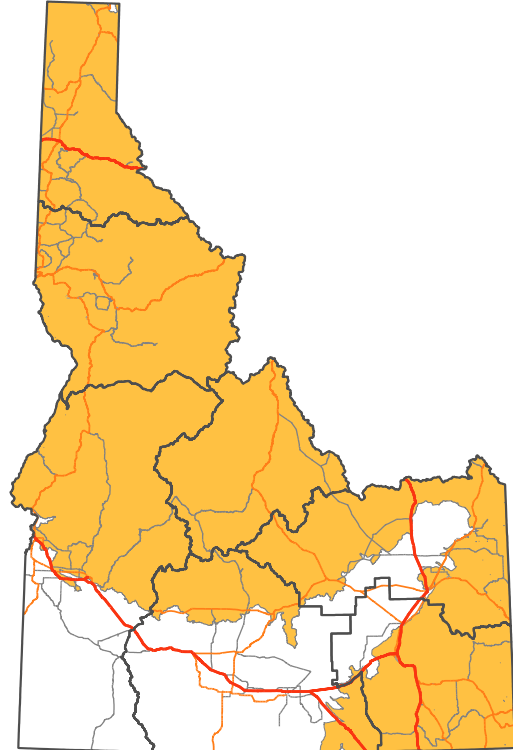
Possession Limit 24

2021 — August 30 through March 31, 2022

Daily Bag Limit..... 8

Possession Limit 24

Shaded areas show general distribution of Red Squirrel



Red Squirrel CCBY IDAHO FISH AND GAME

RULES FOR UPLAND GAME ANIMALS

Unlawful Methods of Take

No person may take upland game animals:

- From one-half hour after sunset to one-half hour before sunrise.
- With a trap, snare, net, or shotgun using shotgun shells exceeding 3 1/2 inches in length.
- By the use or aid of any electronic call.

See page 44 for additional Unlawful Methods of Take.

Definitions

Daily Bag Limit: The maximum number of upland game animals that may be legally taken, caught or killed by any one (1) person during a calendar day.

Possession Limit: The maximum number of each species of upland game animals that may be lawfully possessed while in the field or being transported.



Cottontail Rabbit © Moose Henderson



Cottontail Seasons

2020 — August 30 through March 31, 2021

Daily Bag Limit.....8

Possession Limit 24

2021 — August 30 through March 31, 2022

Daily Bag Limit.....8

Possession Limit24

Snowshoe Hare Seasons

2020 — August 30 through March 31, 2021

Daily Bag Limit.....8

Possession Limit24

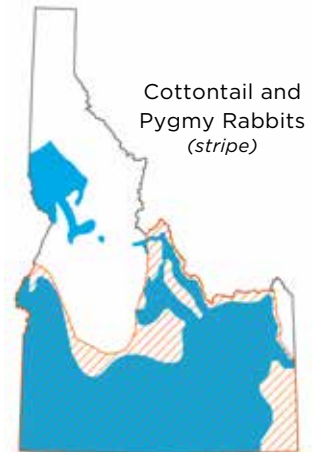
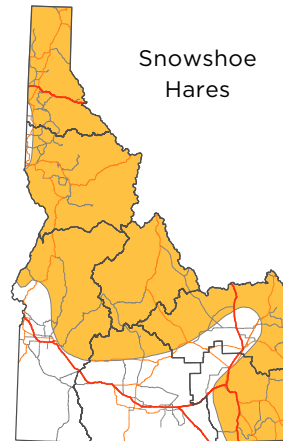
2021 — August 30 through March 31, 2022

Daily Bag Limit.....8

Possession Limit24

Pygmy Rabbit Season is CLOSED

Shaded areas show general distribution of these species



Cottontail and Hare Seasons

To correctly distinguish cottontail (season OPEN) and pygmy rabbits (season CLOSED), check for these characteristics:

Cottontail (Season is OPEN)

Tail: dark above and white underneath.

Size: More than one foot in length (13.5-16.6 inches)



Cottontail © Justin Wilde

Pygmy Rabbit (Season is CLOSED)

Tail: buffy gray with no white on it.

Size: Less than one foot in length (9.7-11.3 inches)

Contact your local regional office to determine if pygmy rabbits are found in your area of interest.



Pygmy © Beth Waterbury



Pygmy © Beth Waterbury

