

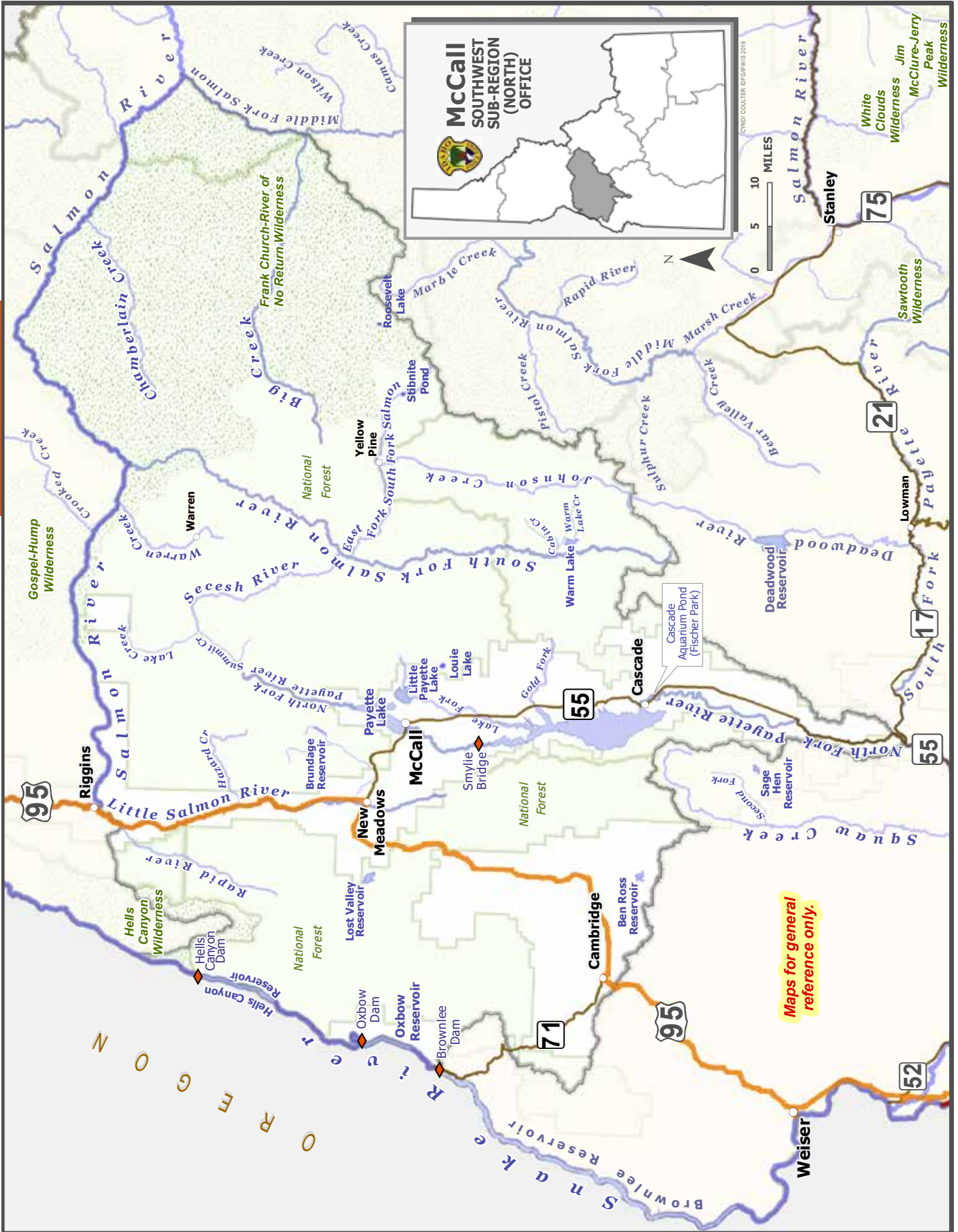
Maps for general reference only.

Nampa
SOUTHWEST REGIONAL OFFICE

Boise
STATE HEADQUARTERS

CYNDI COULTER IDFG/HWIS 2019

0 10 20 MILES



Maps for general reference only.

General Fishing Season for the Southwest Region (includes McCall Sub-Region)

All Waters Open All Year

Except as modified in Southwest Region Special Rule Waters on Pages 20-21.

Fishing is not allowed within the posted upstream and downstream boundary of any fish weir or trap.

Daily Bag Limits for the Southwest Region

The following daily bag limits apply to all waters of the Southwest Region except as modified in Southwest Region Special Rule Waters on Pages 20-21. The possession limit is 3-times the daily bag limit.

Bass (*Largemouth and Smallmouth*)

- Bass limit is 6, both species combined
- None under 12 inches

Brook Trout

- Brook Trout limit is 25
- Harvest allowed during any open season unless otherwise noted under Special Rules – if gear or bait restrictions are listed, they must be followed when fishing for Brook Trout

Bull Trout

- Bull Trout limit is 0, catch-and-release

Kokanee

- Kokanee limit is 6

Salmon

- Spring and summer Chinook Salmon seasons and limits are set by the Idaho Fish and Game Commission and issued in separate brochures
- Seasons and limits for fall Chinook Salmon and Coho Salmon can be found on page 45 in this booklet
- Sockeye Salmon limit is 0 and fishing for or targeting Sockeye Salmon is illegal
- Fishing for or targeting salmon is prohibited unless a salmon season is specifically opened for that water

Steelhead (*ocean-going*)

- Defined as Rainbow Trout longer than twenty (20) inches in length in the Salmon River drainage (excluding lakes and reservoirs). Between Hells Canyon Dam and Oxbow Dam and the Boise River from its mouth upstream to Barber Dam during steelhead seasons, steelhead are Rainbow Trout over twenty (20) inches in length with the adipose fin clipped (as evidenced by a healed scar)

- Fishing for or targeting steelhead is prohibited unless a steelhead season is specifically opened for that water (see pages 41–46)

Sturgeon

- Sturgeon limit is 0, catch-and-release
- Sturgeon must not be removed from the water and must be released upon landing
- Barbless hooks are required
- Use of a sliding swivel device to secure a weight, and a lighter test line to secure weight to sliding swivel device is required. See page 54 for details

Tiger Muskie

- Tiger Muskie limit is 2, none under 40 inches

Trout includes *Brown Trout, Lake Trout, Golden Trout, Arctic Grayling, Cutthroat Trout, Rainbow Trout, land-locked Chinook and Coho Salmon, trout hybrids (e.g. Tiger Trout)*

- Trout limit is 6, all species combined

Does not include Bull Trout and Brook Trout which are listed separately

Whitefish

- Whitefish limit is 25
- Harvest allowed during any open season unless otherwise noted under Special Rules – if gear or bait restrictions are listed, they must be followed when fishing for whitefish

Protected Nongame Fish includes *Pacific Lamprey*

- May not be harvested or possessed

All Other Fish Species includes *bullfrogs and crayfish*

- No bag, size or possession limit

Check for potential fish consumption advisories. See Page 68.

Special Rule Waters for the Southwest Region (See Pages 20-21 for details)

Ben Ross Reservoir	Deadwood Reservoir	Owyhee River and tributaries	Salmon River tributaries
Big Creek	Deadwood Reservoir tributaries	Oxbow Reservoir	Salmon River, Middle Fork and tributaries
Boise River	Dick Knox Pond	Parkcenter Pond	Salmon River, South Fork and tributaries
Boise River, Middle Fork	Duck Valley Indian Reservation	Payette River, North Fork	Squaw Creek and tributaries
Boise River, South Fork	Lake Lowell	Payette River, South Fork and tributaries	Stibnite Pond (Glory Hole)
Brundage Reservoir and tributaries	Little Payette Lake	Rapid River and tributaries	Warren Creek
Cascade Aquarium Pond	Louie Lake	Roosevelt Lake	Weiser Community Pond
Chamberlain Creek and tributaries	McDevitt Pond	Sage Hen Reservoir tributaries	Wilson Springs Ponds
Crane Falls Lake	Middle Fork Salmon River	Salmon River	
	M.K. Nature Center		

Special Rule Waters for the Southwest Region

For waters not listed below, see Page 19 for fishing seasons, bag and possession limits, and rules that apply to all waters within the Southwest Region.

Ben Ross Reservoir

- Bass limit is 2, none between 12 and 16 inches

Big Creek

- Trout limit is 0, catch-and-release
- No bait allowed, barbless hooks required

Boise River

from the mouth upstream to Lucky Peak Dam (lower Boise River)

Section: From the downstream side of the East Parkcenter Bridge to the upstream side of the West Parkcenter Bridge

- Trout limit is 2, none under 14 inches

All other sections of the lower Boise River - Southwest Region general rules apply

Boise River, Middle Fork

Section: From the confluence of the North Fork upstream to Atlanta Dam

- Trout limit is 2, none under 14 inches
- No bait allowed, barbless hooks required

All other sections of the Boise River, Middle Fork - Southwest Region general rules apply

Boise River, South Fork

Section: From Neal Bridge (Forest Road 189) upstream to Anderson Ranch Dam

- No bait allowed, one barbless hook per fly or lure
- December 1 through March 31 – trout limit is 0, catch-and-release
- April 1 through Friday before Memorial Day weekend – closed to fishing
- Saturday of Memorial Day weekend through November 30 – trout limit 2, none under 20 inches

Section: Boise River, South Fork upstream of Anderson Ranch Dam; see Magic Valley Region rules (Page 25)

Brundage Reservoir and tributaries

- Trout limit is 2, none over 14 inches
- No bait allowed

Cascade Aquarium Pond

- Closed to fishing

Chamberlain Creek and tributaries

- Trout limit is 2

Crane Falls Lake - Electric motors only

- Bass limit is 2, none under 20 inches

Deadwood Reservoir

- Kokanee limit is 15

Deadwood Reservoir tributaries

- Trout limit is 2
- Kokanee limit is 15

Dick Knox Pond

- Bass limit is 2, none under 20 inches

Duck Valley Indian Reservation

contact the Duck Valley Indian Tribal Office

Lake Lowell

- January 1 to June 30 - bass limit is 0, catch-and-release
- July 1 to December 31- bass limit is 2, none between 12 and 16 inches

Little Payette Lake

- Bass limit is 2, none under 20 inches
- Kokanee limit is 25

Little Salmon River

- Southwest Region general rules apply

Louie Lake (an alpine lake in the Boulder Creek drainage)

- Trout limit is 2, none under 20 inches
- No bait allowed, barbless hooks required

McDevitt Pond

- Trout limit is 2

Middle Fork Salmon River

(see Salmon River, Middle Fork and tributaries)

M.K. Nature Center

- Closed to fishing

Owyhee River and tributaries

- Bass limit is 6, any size

Oxbow Reservoir

(between Brownlee Dam and Oxbow Dam)

- Bass limit is 2, none between 12 and 16 inches

Parkcenter Pond

- Trout limit is 2

Payette River, North Fork

Section: From Payette Lake upstream, including tributaries

- Kokanee limit is 0, catch-and-release

Section: From Smylie Bridge (Hartsell) to Payette Lake

- December 1 to Friday of Memorial Day weekend - trout limit is 0, catch-and-release

All other sections of the Payette River, North Fork - Southwest Region general rules apply

Payette River, South Fork and tributaries

(except the Middle Fork Payette drainage)

- Trout limit is 2

Rapid River and tributaries (tributary to the Little Salmon River)

- Trout limit is 2

Roosevelt Lake

- Trout limit is 0, catch-and-release
- No bait allowed, barbless hooks required

Sage Hen Reservoir tributaries

- December 1 through June 15 - closed to fishing
- June 16 through November 30 - trout limit is 2

Salmon River

- Trout limit is 6; only trout with a clipped adipose fin, as evidenced by a healed scar, may be kept; no harvest of Cutthroat Trout
- No bag, size or possession limits on bass

Salmon River tributaries

- No bag, size or possession limits on bass

Section: Those tributaries from the mouth of the Salmon River upstream to the mouth of the Middle Fork Salmon River (except Little Salmon River and South Fork Salmon River)

- Trout limit is 2

Section: Those tributaries upstream of the mouth of Middle Fork Salmon River -See Page 40, Salmon River tributaries, Special Rule Waters.

Salmon River, Middle Fork and tributaries

- Trout limit is 0, catch-and-release
- No bait allowed, barbless hooks required
- No bag, size or possession limits on bass

Salmon River, South Fork and tributaries *(includes:*

Johnson Creek, East Fork South Fork Salmon River, Secesh River, Lake Creek, Summit Creek and tributaries)

- Trout limit is 0, catch-and-release
- No bait allowed, barbless hooks required
- No bag, size or possession limits on bass

Squaw Creek and tributaries

- Trout limit is 2

Stibnite Pond *(Glory Hole)*

- Trout limit is 0, catch-and-release
- No bait allowed, barbless hooks required

Warren Creek

- Trout limit is 2

Weiser Community Pond

- Trout limit is 2

Wilson Springs Ponds *(all waters within the Wilson Springs access area including Wilson Drain)*

- Trout limit is 2

FISHING TOURNAMENTS

Idaho Fish and Game regulates fishing tournaments to help conserve fish populations and minimize user conflicts



Photo Courtesy of Take Me Fishing

If you are holding an event that has any of the following:

- A live fish weigh-in;
- Awards of \$1,000 or more in cash or prizes;
- 20 or more expected participants*

You are required to apply for a fishing tournament permit.

*Contests for participants under the age of 14 are exempt



For application and information fees, go to:

idfg.idaho.gov/fish/tournaments