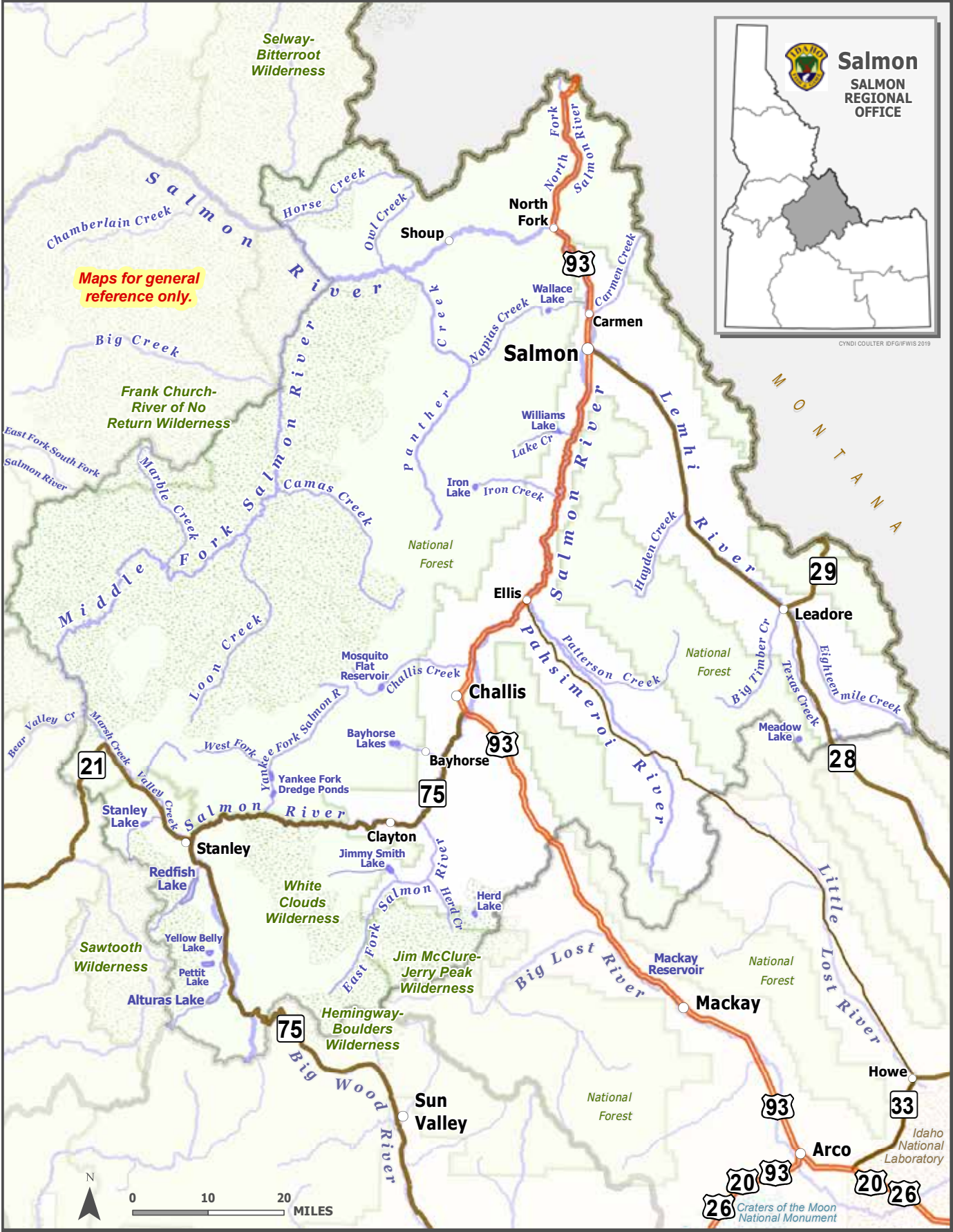




Salmon
SALMON REGIONAL OFFICE

©YNDI COULTER, DFG/FWS 2019



Maps for general reference only.

General Fishing Season for the Salmon Region

All Waters Open All Year

Except as modified in Salmon Region Special Rule Waters on Page 40.

Fishing is not allowed within the posted upstream and downstream boundary of any fish weir or trap.

Daily Bag Limits for the Salmon Region

The following daily bag limits apply to all waters of the Salmon Region except as modified in Salmon Region Special Rule Waters on Page 40. The possession limit is 3-times the daily bag limit.

Bass (*Largemouth and Smallmouth*)

- No bag, size or possession limits

Brook Trout

- Brook Trout limit is 25
- Harvest allowed during any open season unless otherwise noted under Special Rules – if gear or bait restrictions are listed, they must be followed when fishing for Brook Trout

Bull Trout

- Bull Trout limit is 0, catch-and-release

Kokanee

- Kokanee limit is 25

Salmon

- Spring and summer Chinook Salmon seasons and limits are set by the Idaho Fish and Game Commission and issued in separate brochures
- Seasons and limits for fall Chinook Salmon and Coho Salmon can be found on page 45 in this booklet
- Sockeye Salmon limit is 0 and fishing for or targeting Sockeye Salmon is illegal
- Fishing for or targeting salmon is prohibited unless a salmon season is specifically opened for that water

Steelhead (*ocean-going*)

- Defined as Rainbow Trout longer than twenty (20) inches in length in the Salmon River drainage (excluding the Lemhi and Pahsimeroi rivers, lakes and reservoirs, and ponds)
- Fishing for or targeting steelhead is prohibited unless a steelhead season is specifically opened for that water (see pages 41–46)

Sturgeon

- Sturgeon limit is 0, catch-and-release
- Sturgeon must not be removed from the water and must be released upon landing
- Barbless hooks are required
- Use of a sliding swivel device to secure a weight, and a lighter test line to secure weight to sliding swivel device is required. See page 54 for details

Tiger Muskie

- Tiger Muskie limit is 2, none under 40 inches

Trout includes Lake Trout, Golden Trout, Arctic Grayling, Cutthroat Trout, Rainbow Trout, Sunapee Trout and trout hybrids (e.g. Tiger Trout)

- Trout limit is 6, all species combined
- Chinook Salmon and steelhead placed in ponds are counted in the trout bag limit

Does not include Bull Trout and Brook Trout which are listed separately

Whitefish

- Whitefish limit is 25
- Harvest allowed during any open season unless otherwise noted under Special Rules – if gear or bait restrictions are listed, they must be followed when fishing for whitefish

Protected Nongame Fish including Pacific Lamprey

- May not be harvested or possessed

All Other Fish Species includes bullfrogs and crayfish

- No bag, size or possession limit

Check for potential fish consumption advisories. See Page 68.

Special Rule Waters for the Salmon Region (see Page 40 for details)

East Fork Salmon River, see Salmon River East Fork

Herd Lake

Jimmy Smith Lake

Lake Creek and tributaries (Lemhi County)

Lemhi River

Middle Fork Salmon River see Salmon River, Middle Fork

North Fork Salmon River see Salmon River, North Fork

Pahsimeroi River

Redfish Lake

Salmon River

Salmon River tributaries

Salmon River, East Fork

Salmon River, Middle Fork and tributaries

Salmon River, North Fork

Salmon River, Yankee Fork and West Fork Yankee Fork

Stanley Lake

Wallace Lake

Yankee Fork Salmon River Dredge Ponds

Yankee Fork Salmon River see Salmon River, Yankee Fork

Special Rule Waters for the Salmon Region

For waters not listed below, see Page 39 for fishing seasons, bag and possession limits, and rules that apply to all waters within the Salmon Region.

East Fork Salmon River (see *Salmon River, East Fork*)

Herd Lake

- Trout limit is 25

Jimmy Smith Lake

- Trout limit is 25

Lake Creek and tributaries (above *Williams Lake*)

- December 1 through June 30 - closed to fishing upstream from the posted boundary at Williams Lake
- July 1 through November 30 - Salmon Region general rules apply

Lemhi River

- December 1 through Friday before Memorial Day weekend - trout limit is 0, catch-and-release
- Saturday of Memorial Day weekend through November 30 - trout limit is 6, no harvest of Cutthroat Trout

Lemhi River tributaries

- Salmon Region general rules apply

Middle Fork Salmon River (see *Salmon River, Middle Fork and tributaries*)

North Fork Salmon River (see *Salmon River, North Fork*)

Pahsimeroi River

- December 1 through Friday before Memorial Day weekend - trout limit is 0, catch-and-release
- Saturday of Memorial Day weekend through November 30 - trout limit is 6, no harvest of Cutthroat Trout

Pahsimeroi River tributaries

- Salmon Region general rules apply

Redfish Lake

- January 1 through August 7 - Salmon Region general rules apply
- August 8 through December 31 - kokanee limit is 0, catch-and-release

Salmon River

- Trout limit is 6; only trout with a clipped adipose fin, as evidenced by a healed scar, may be kept, no harvest of Cutthroat Trout

Salmon River tributaries

Section: Those tributaries from the mouth of the Salmon River upstream to the Middle Fork Salmon River, except Little Salmon River (Page 20) and South Fork Salmon River (Page 21).

- Trout limit is 2

Section: Those tributaries from the mouth of the Middle Fork Salmon River upstream (except: North Fork Salmon River, Lemhi, Pahsimeroi, East Fork Salmon River, and Yankee Fork Salmon River)

- December 1 through Friday before Memorial Day weekend – trout limit is 0, catch-and-release
- Saturday of Memorial Day weekend through November 30 - Salmon Region general rules apply

Salmon River, East Fork

- December 1 through Friday before Memorial Day weekend – trout limit is 0, catch-and-release
- Saturday of Memorial Day weekend through November 30 – trout limit is 6, no harvest of Cutthroat Trout

Salmon River, East Fork tributaries

- Salmon Region general rules apply

Salmon River, Middle Fork and all tributaries

- Trout limit is 0, catch-and-release
- No bait allowed, barbless hooks required

Salmon River, North Fork

- December 1 through Friday before Memorial Day weekend – trout limit is 0, catch-and-release
- Saturday of Memorial Day weekend through November 30 – trout limit is 6, no harvest of Cutthroat Trout

Salmon River, North Fork tributaries

- Salmon Region general rules apply

Salmon River, Yankee Fork and West Fork Yankee Fork

- December 1 through Friday before Memorial Day weekend - trout limit is 0, catch-and-release
- Saturday of Memorial Day weekend through November 30 – trout limit is 6, no harvest of Cutthroat Trout

Salmon River, Yankee Fork tributaries

- Salmon Region general rules apply

Stanley Lake

- Trout limit is 6, only 2 may be Lake Trout

Wallace Lake

- Trout limit is 2

Yankee Fork Salmon River Dredge Ponds

- December 1 through Friday before Memorial Day weekend - closed to fishing
- Saturday of Memorial Day weekend through November 30 - Salmon Region general rules apply

Yankee Fork Salmon River (see *Salmon River, Yankee Fork*)