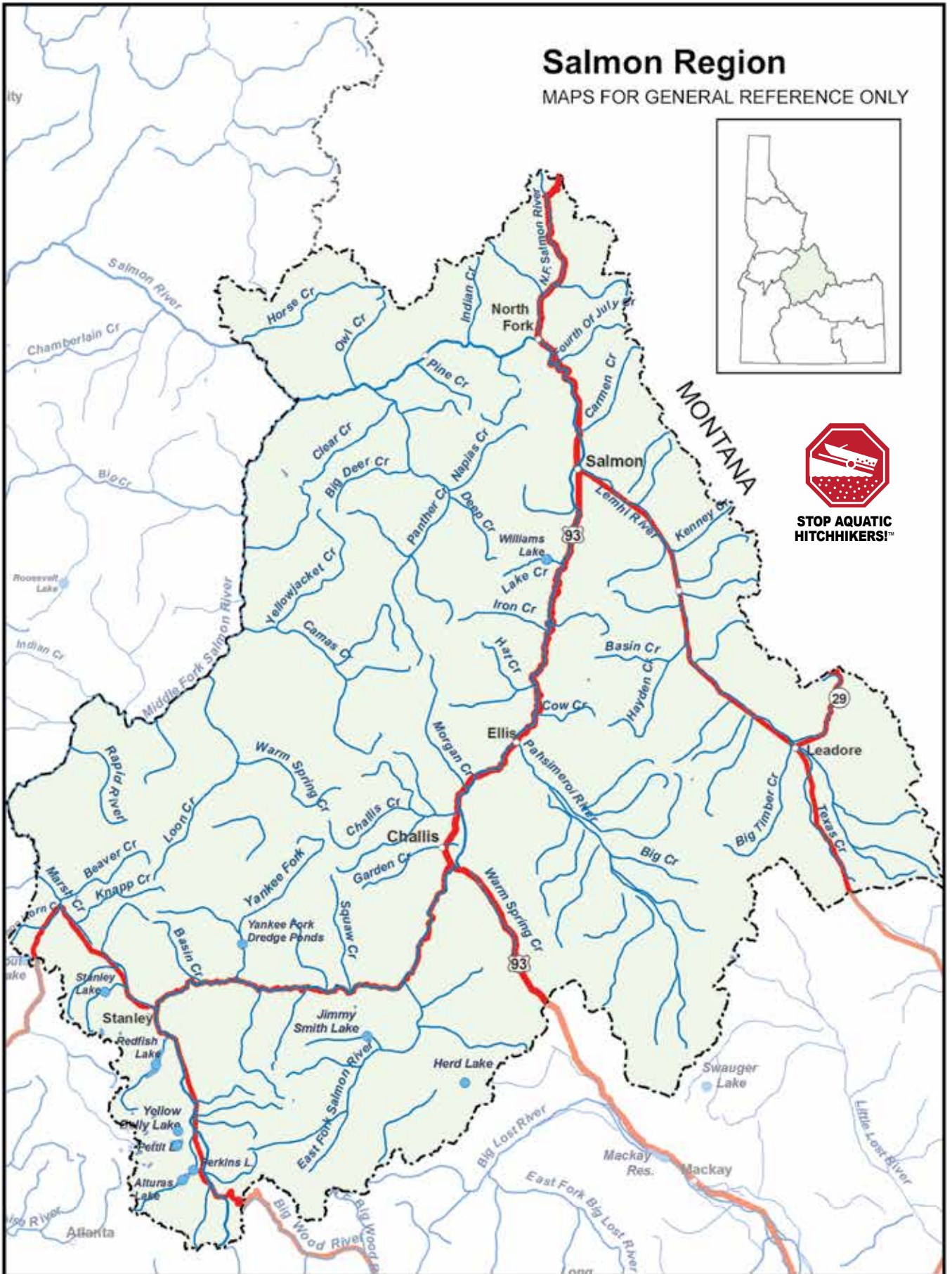


# Salmon Region

MAPS FOR GENERAL REFERENCE ONLY



**STOP AQUATIC  
HITCHHIKERS!**



**General Fishing Season for the Salmon Region**

**All Waters Open All Year**

Except as modified in Salmon Region Special Rule Waters on Page 38.

**Fishing is not allowed within the posted upstream and downstream boundary of any fish weir or trap.**

**Daily Bag Limits for the Salmon Region**

The following daily bag limits apply to all waters of the Salmon Region except as modified in Salmon Region Special Rule Waters on Page 38. The possession limit is 3-times the daily bag limit after the second day of the season.

**Bass** (*Largemouth and Smallmouth*)

- No bag, size or possession limits

**Brook Trout**

- Brook Trout limit is 25
- Harvest allowed during any open season unless otherwise noted under Special Rules – if gear or bait restrictions are listed, they must be followed when fishing for Brook Trout

**Bull Trout**

- Bull Trout limit is 0, catch-and-release

**Kokanee**

- Kokanee limit is 25

**Salmon** (*ocean-going*)

- Salmon seasons and limits are set annually by the Idaho Fish and Game Commission and issued in a separate brochure
- Fishing for or targeting salmon is prohibited unless a salmon season is specifically opened for that water

**Steelhead** (*ocean-going*)

- Defined as Rainbow Trout longer than twenty (20) inches in length in the Salmon River drainage (excluding the Lemhi and Pahsimeroi rivers, lakes and reservoirs, and ponds)
- Fishing for or targeting steelhead is prohibited unless a steelhead season is specifically opened for that water (see pages 39-43)

**Sturgeon**

- Sturgeon limit is 0, catch-and-release
- Sturgeon must not be removed from the water and must be released upon landing
- Barbless hooks and sliding sinkers are required, see Page 52 for details

**Tiger Muskie**

- Tiger Muskie limit is 2, none under 40 inches

**Trout** includes *Lake Trout, Golden Trout, Arctic Grayling, Cutthroat Trout, Rainbow Trout, Sunapee Trout and trout hybrids (e.g. Tiger Trout)*

- Trout limit is 6, all species combined
- Chinook Salmon placed in ponds are considered in the trout bag limit.

**Does not include Bull Trout and Brook Trout which are listed separately**

**Whitefish**

- Whitefish limit is 25
- Harvest allowed during any open season unless otherwise noted under Special Rules – if gear or bait restrictions are listed, they must be followed when fishing for whitefish

**Protected Nongame Fish** including *Pacific Lamprey*

- May not be harvested or possessed

**All Other Fish Species** includes *bullfrogs and crayfish*

- No bag, size or possession limit

*Check for potential fish consumption advisories. See Page 51.*

**Special Rule Waters for the Salmon Region (see Page 38 for details)**

East Fork Salmon River, see Salmon River East Fork  
 Herd Lake  
 Jimmy Smith Lake  
 Lake Creek and tributaries (Lemhi County)  
 Lemhi River  
 Middle Fork Salmon River see Salmon River, Middle Fork

North Fork Salmon River see Salmon River, North Fork  
 Pahsimeroi River  
 Redfish Lake  
 Salmon River  
 Salmon River tributaries  
 Salmon River, East Fork  
 Salmon River, Middle Fork and tributaries

Salmon River, North Fork  
 Salmon River, Yankee Fork and West Fork Yankee Fork  
 Wallace Lake  
 Yankee Fork Salmon River Dredge Ponds  
 Yankee Fork Salmon River see Salmon River, Yankee Fork

# Special Rule Waters for the Salmon Region

For waters not listed below, see Page 37 for fishing seasons, bag and possession limits, and rules that apply to all waters within the Salmon Region.

## **East Fork Salmon River** (see *Salmon River, East Fork*)

### **Herd Lake**

- Trout limit is 25

### **Jimmy Smith Lake**

- Trout limit is 25

### **Lake Creek and tributaries** (above *Williams Lake*)

- December 1 through June 30 - closed to fishing upstream from the posted boundary at Williams Lake
- July 1 through November 30 - Salmon Region general rules apply

### **Lemhi River**

- December 1 through Friday before Memorial Day weekend - trout limit is 0, catch-and-release
- Saturday of Memorial Day weekend through November 30 - trout limit is 6, no harvest of Cutthroat Trout, no trout under 14 inches

### **Lemhi River tributaries**

- Salmon Region general rules apply

### **Middle Fork Salmon River** (see *Salmon River, Middle Fork and tributaries*)

### **North Fork Salmon River** (see *Salmon River, North Fork*)

### **Pahsimeroi River**

- December 1 through Friday before Memorial Day weekend - trout limit is 0, catch-and-release
- Saturday of Memorial Day weekend through November 30 - trout limit is 6, no harvest of Cutthroat Trout, no trout under 14 inches

### **Pahsimeroi River tributaries**

- Salmon Region general rules apply

### **Redfish Lake**

- January 1 through August 7 - Salmon Region general rules apply
- August 8 through December 31 - kokanee limit is 0, catch-and-release

### **Salmon River**

- Trout limit is 6; only trout with a clipped adipose fin, as evidenced by a healed scar, may be kept, no harvest of Cutthroat Trout

### **Salmon River tributaries**

Section: Those tributaries from the mouth of the Salmon River upstream to the mouth of the Middle Fork Salmon River (except Crooked Creek, Little Salmon River, and South Fork Salmon River)

- Trout limit is 2

Section: Those tributaries from the mouth of the Middle Fork Salmon River upstream (except: North Fork Salmon River, Lemhi, Pahsimeroi, East Fork Salmon River, and Yankee Fork Salmon River)

- December 1 through Friday before Memorial Day weekend – trout limit is 0, catch-and-release
- Saturday of Memorial Day weekend through November 30 - Salmon Region general rules apply

### **Salmon River, East Fork**

- December 1 through Friday before Memorial Day weekend – trout limit is 0, catch-and-release
- Saturday of Memorial Day weekend through November 30 – trout limit is 6, no harvest of Cutthroat Trout

### **Salmon River, East Fork tributaries**

- Salmon Region general rules apply

### **Salmon River, Middle Fork and all tributaries**

- Trout limit is 0, catch-and-release
- No bait allowed, barbless hooks required

### **Salmon River, North Fork**

- December 1 through Friday before Memorial Day weekend – trout limit is 0, catch-and-release
- Saturday of Memorial Day weekend through November 30 – trout limit is 6, no harvest of Cutthroat Trout

### **Salmon River, North Fork tributaries**

- Salmon Region general rules apply

### **Salmon River, Yankee Fork and West Fork Yankee Fork**

- December 1 through Friday before Memorial Day weekend - trout limit is 0, catch-and-release
- Saturday of Memorial Day weekend through November 30 – trout limit is 6, no harvest of Cutthroat Trout

### **Salmon River, Yankee Fork tributaries**

- Salmon Region general rules apply

### **Wallace Lake**

- Trout limit is 2

### **Yankee Fork Salmon River Dredge Ponds**

- December 1 through Friday before Memorial Day weekend - closed to fishing
- Saturday of Memorial Day weekend through November 30 - Salmon Region general rules apply

### **Yankee Fork Salmon River** (see *Salmon River, Yankee Fork*)