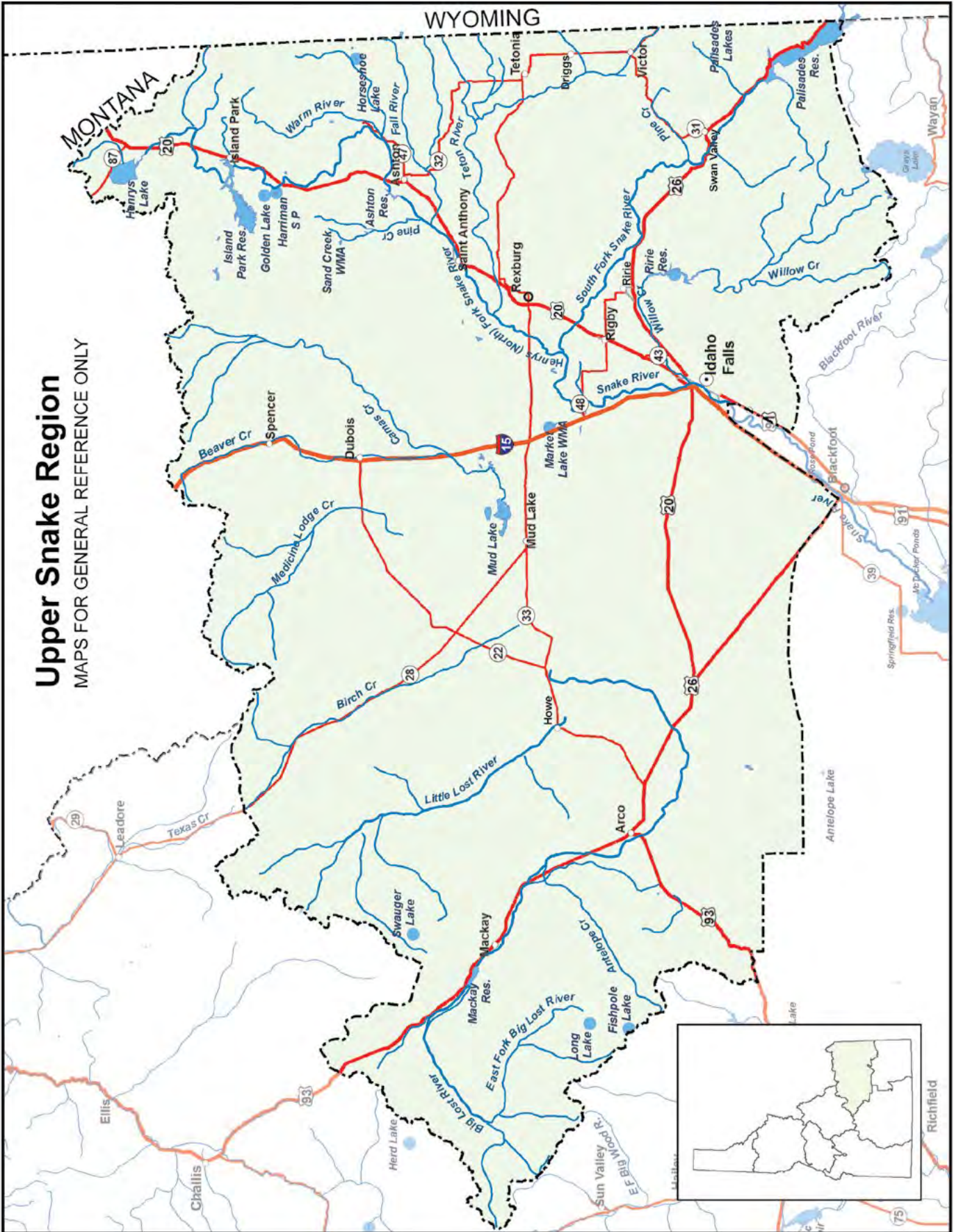


Upper Snake Region

MAPS FOR GENERAL REFERENCE ONLY



Upper Snake

UPPER SNAKE REGION

General Fishing Season for the Upper Snake Region

All Waters Open All Year

Except as modified in Upper Snake Region Special Rule Waters on Pages 33-34.

Fishing is not allowed within the posted upstream and downstream boundary of any fish weir or trap.

Daily Bag Limits for the Upper Snake Region

The following daily bag limits apply to all waters of the Upper Snake Region except as modified in Upper Snake Region Special Rule Waters on Pages 33-34. The possession limit is 3-times the daily bag limit after the second day of the season.

Bass (*largemouth and smallmouth*)

- Bass limit is 6; both species combined

Brook Trout

- Brook trout limit is 25
- Harvest allowed during any open season unless otherwise noted under Special Rules – if gear or bait restrictions are listed, they must be followed when fishing for brook trout

Bull Trout

- Bull trout limit is 0, catch-and-release
- **No bull trout harvest is allowed**

Kokanee

- Kokanee limit is 15

Sturgeon

- Sturgeon limit is 0, catch-and-release
- Sturgeon must not be removed from the water and must be released upon landing
- Barbless hooks and sliding sinkers are required, see Page 52 for details

Tiger Muskie

- Tiger Muskie limit is 2, none under 40 inches

Trout includes brown trout, golden trout, lake trout, splake, Arctic grayling, cutthroat trout, rainbow trout, and trout hybrids (e.g. tiger trout)

- Trout limit is 6, all species combined

Does not include bull trout and brook trout which are listed separately

Whitefish

- Whitefish limit is 25 – see Big Lost River exception
- Harvest allowed during any open season unless otherwise noted under Special Rules – if gear or bait restrictions are listed, they must be followed when fishing for whitefish

Protected Nongame Fish including leatherside chub and bluehead sucker

- May not be harvested or possessed

All Other Fish Species includes bullfrogs and crayfish

- No bag, size or possession limit

Check for potential fish consumption advisories. See Page 53.

Special Rule Waters for the Upper Snake Region (see Pages 33-34 for details)

Beaver Creek and tributaries	Henrys Lake Outlet	Ririe Reservoir
Becker Pond (Ryder Park Pond)	Henrys Lake tributaries	Sand Creek Wildlife Management Area
Big Lost River and tributaries	Horseshoe Lake (Fremont County)	Sellars Creek (see Willow Creek tributaries)
Burns Creek (see South Fork Snake River tributaries)	Lava Creek (see Willow Creek tributaries)	Silver Lake (Harriman State Park)
Dry Beds (Snake River)	Little Lost River and tributaries	Snake River
Fall River and tributaries	Long Lake (Custer County)	South Fork Snake River
Fish Creek (Harriman State Park)	Market Lake Wildlife Management Area	South Fork Snake River tributaries
Fishpole Lake (Custer County)	McCoy Creek (see Palisades Reservoir tributaries)	Swauger Lake (Custer County)
Fox Creek (see Teton River tributaries)	Medicine Lodge Creek and tributaries	Teardrop Lake
Golden Lake (Harriman State Park)	Mud Lake	Teton Creek (see Teton River tributaries)
Hell Creek (see Willow Creek tributaries)	Palisades Creek (see South Fork Snake River tributaries)	Teton River
Henrys Fork (Snake River, North Fork)	Palisades Lakes	Teton River tributaries
Henrys Fork tributaries (excluding Thurmon Creek, Warm River and the Fall River)	Palisades Reservoir tributaries	Thurmon Creek (Harriman State Park)
Jim Moore Pond	Pine Creek (see South Fork Snake River tributaries)	Trail Creek (see Teton River tributaries)
Henrys Lake	Rainey Creek (see South Fork Snake River tributaries)	Warm River and tributaries
		Willow Creek
		Willow Creek tributaries

Special Rule Waters for the Upper Snake Region

See Page 32 for fishing seasons, bag and possession limits, and rules that apply to all waters within the Upper Snake Region except as listed below.

Beaver Creek and tributaries

- Trout limit is 6, no harvest of cutthroat trout

Becker Pond (Ryder Park Pond)

- Two fish any species

Big Lost River and tributaries

- December 1 through Friday before Memorial Day weekend – trout limit is 0, catch-and-release; whitefish limit is 0, catch-and-release
- Saturday of Memorial Day weekend through November 30 – trout limit is 6; whitefish limit is 0, catch-and-release

Dry Beds (Snake River)

Section: From the Highway 48 bridge upstream to the Great Feeder irrigation diversion headgate

- May 1 through March 31 – Upper Snake Region general rules apply
- April 1 through April 30 – it is legal to take fish with dip nets, by snagging or by hand – Upper Snake Region bag limits apply

Fall River and tributaries

- Limit is 2 trout; no harvest of cutthroat trout

Fish Creek (Harriman State Park)

- Trout limit is 6, no harvest of cutthroat trout
- Fly-fishing only

Fishpole Lake (an alpine lake in Custer County)

- Trout limit is 2, none under 20 inches

Golden Lake (Harriman State Park)

- Closed to fishing

Henrys Fork (Snake River, North Fork)

Section: South Fork Snake River/Henrys Fork upstream to Vernon Bridge

- Trout limit is 2; no harvest of cutthroat trout

Section: From Vernon Bridge upstream to Ashton Dam

- December 1 through Friday before Memorial Day weekend – trout limit is 0; catch-and-release only
- Saturday of Memorial Day weekend through November 30 – trout limit is 2, no harvest of cutthroat trout

Section: From Highway 20 bridge upstream to the posted boundary upstream of Riverside Campground

- Trout limit is 2, no harvest of cutthroat trout

Section: From the posted boundary upstream of the Riverside Campground upstream to the lower Harriman State Park boundary

- Trout limit is 0, catch-and-release, no bait allowed, barbless hooks required

Section: From the lower Harriman State Park boundary upstream to the upper Harriman State Park boundary (Harriman Ranch)

- December 1 through June 14 – closed to fishing
- June 15 through November 30 – trout limit is 0, catch-and-release, fly fishing only, barbless hooks required

Section: From the upper Harriman State Park boundary to Island Park Dam

- Trout limit is 0, catch-and-release
- No bait allowed, barbless hooks required

Section: From McCrea Bridge upstream to the Henrys Lake Outlet

- December 1 through Friday before Memorial Day weekend – trout limit is 0, catch-and-release
- Saturday of Memorial Day weekend through November 30 – trout limit is 6, only 2 may be cutthroat trout, no cutthroat trout under 16 inches

Section: From Henrys Lake Outlet upstream to the head of Big Springs

- Closed to fishing

All other sections of Henrys Fork including Ashton and Island Park Reservoirs – Upper Snake Region general rules apply

Henrys Fork tributaries (except Warm River, Fall River, and Thurmon Creek)

- December 1 through Friday before Memorial Day weekend – trout limit is 0, catch-and-release
- Saturday of Memorial Day weekend through November 30 – trout limit is 6, no harvest of cutthroat trout

Henrys Lake

Section: Those portions of the lake within the posted boundaries of Staley Springs and within 100 yards of Hatchery Creek

- Closed to fishing

Remainder of Henrys Lake

- January 2 through Friday before Memorial Day weekend – Closed to fishing
- Saturday of Memorial Day weekend through January 1 – trout limit is 2, brook trout must be counted in the trout limit
- Fishing may not continue after 2 trout have been reduced to possession

Henrys Lake Outlet

- December 1 through Friday before Memorial Day weekend – trout limit is 0, catch-and-release
- Saturday of Memorial Day weekend through November 30 – trout limit is 6, only 2 may be cutthroat trout, no cutthroat trout under 16 inches

Henrys Lake tributaries

- July 1 through March 31 – no harvest of cutthroat trout; brook trout limit is 25; only two brook trout over 16 inches
- April 1 through June 30 – closed to fishing
- Hatchery Creek – closed to fishing

Horseshoe Lake (*Fremont County*) - no motors

- Trout limit is 2

Jim Moore Pond

- Trout limit is 2

Little Lost River and tributaries

- Trout limit is 2

Long Lake (*an alpine lake in Custer County*)

- Trout limit is 2, none under 20 inches

Market Lake Wildlife Management Area

- March 1 through July 15 – no boats, rafts or float tubes

Medicine Lodge Creek and tributaries

- Trout limit is 2; no harvest of cutthroat trout

Mud Lake (*west of the posted boundary which runs north and south from McKenzie Point*)

- March 1 through July 15 – no boats, rafts or float tubes

Palisades Lakes (*alpine lakes in the Palisades Creek drainage*)

- Trout limit is 2

Palisades Reservoir tributaries

- Trout limit is 6, no harvest of cutthroat trout
- No harvest of kokanee

Ririe Reservoir

- Ice fishing is restricted to the area from the dam to the posted boundary about 1 mile upstream

Sand Creek Wildlife Management Area

- December 1 through Friday before Memorial Day weekend – closed to fishing
- Saturday of Memorial Day weekend through July 15 – no boats, rafts or float tubes
- Saturday of Memorial Day weekend through November 30 – motorized watercraft prohibited

Additional closures to protect wildlife may be in effect. Call the Upper Snake Regional Office at 208-525-7290 for the latest information.

Silver Lake (*Harriman State Park*)

- Closed to fishing

Snake River

Section: American Falls Reservoir upstream to Gem Lake Dam

- Bass limit is 2; any size

Section: Gem Lake Dam to Osgood Diversion

- Trout limit is 6, only 2 may be cutthroat trout

Section: Osgood Diversion upstream to the confluence of Henrys Fork (North and South Fork)

- Trout limit is 2; no harvest of cutthroat trout

South Fork Snake River

- No harvest of cutthroat trout
- Brown trout limit is 2, none under 16 inches
- No limit on rainbow trout or trout hybrids

South Fork Snake River tributaries

- No harvest of cutthroat trout
- No limit on rainbow trout or trout hybrids
- June 1 through June 30 – closed to fishing

Swauger Lake (*an alpine lake in Custer County*)

- Trout limit is 2, none under 20 inches

Teardrop Lake

- Trout limit is 2

Teton River

- No limit on rainbow trout or hybrids
- No harvest of cutthroat trout

Teton River tributaries

- No harvest of cutthroat trout
- No limit on rainbow trout or hybrids
- June 1 through June 30 – closed to fishing

Thurmon Creek (*Harriman State Park*)

- Closed to fishing

Warm River and tributaries

Section: Within the posted boundaries from the bridge near the Parker (Schueller) Cabin to the mouth of Robinson Creek upstream to State Highway 47 bridge

- Closed to fishing

All other sections of the Warm River

- December 1 through Friday before Memorial Day weekend, trout limit is 0, catch-and-release
- Memorial Day weekend through November 30 – trout limit is 6, no harvest of cutthroat trout

Willow Creek

- December 1 through Friday before Memorial Day weekend – trout limit is 0, catch-and-release
- Saturday of Memorial Day weekend through November 30 – trout limit is 6, no harvest of cutthroat trout

Willow Creek tributaries

- No harvest of cutthroat trout
- No limit on rainbow trout or hybrids
- June 1 through June 30 – closed to fishing

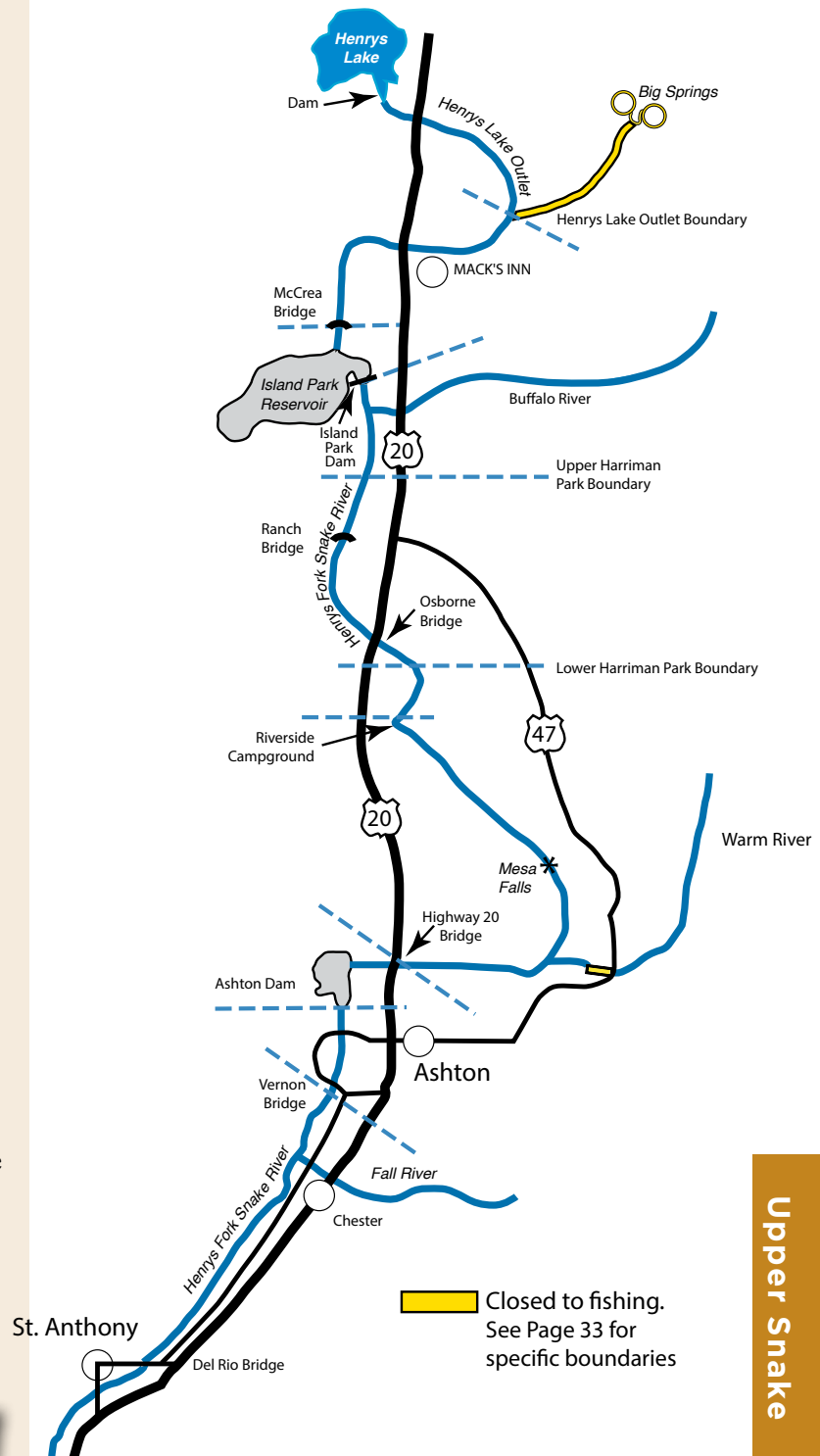
South Fork Snake and Teton Rivers Yellowstone Cutthroat Trout Fishery

Native Yellowstone cutthroat trout are highly valued by South Fork anglers for their aggressive nature and fast growth. Non-native rainbow trout not only compete with Yellowstone cutthroat trout, but they also interbreed with them, producing hybrids. Hybridization is a serious threat to the native cutthroat trout fishery. Idaho Fish and Game is attempting to minimize the level of hybridization in the South Fork by encouraging anglers to harvest rainbow trout, and by using traps to prevent rainbows from spawning in important cutthroat trout spawning tributaries. With your support, these efforts will help ensure this healthy Yellowstone cutthroat population and unique angling opportunity will be around for generations to come. So enjoy a shore lunch, or take some South Fork rainbow trout home for dinner – you’ll be doing the fishery a favor!

Hybrid description: Cutthroat/rainbow trout hybrids display variable color and markings representing a range of shared characteristics from rainbow and cutthroat trout. All hybrids show spotting patterns similar to rainbow trout with spots more evenly distributed from head to tail and above and below the lateral line. **Yellowstone cutthroat/rainbow trout hybrids in the South Fork Snake River drainage are most easily identified by the presence of white fin tips.**



Henry's Fork (Snake River, North Fork) See Page 33 for specific boundaries.



Upper Snake