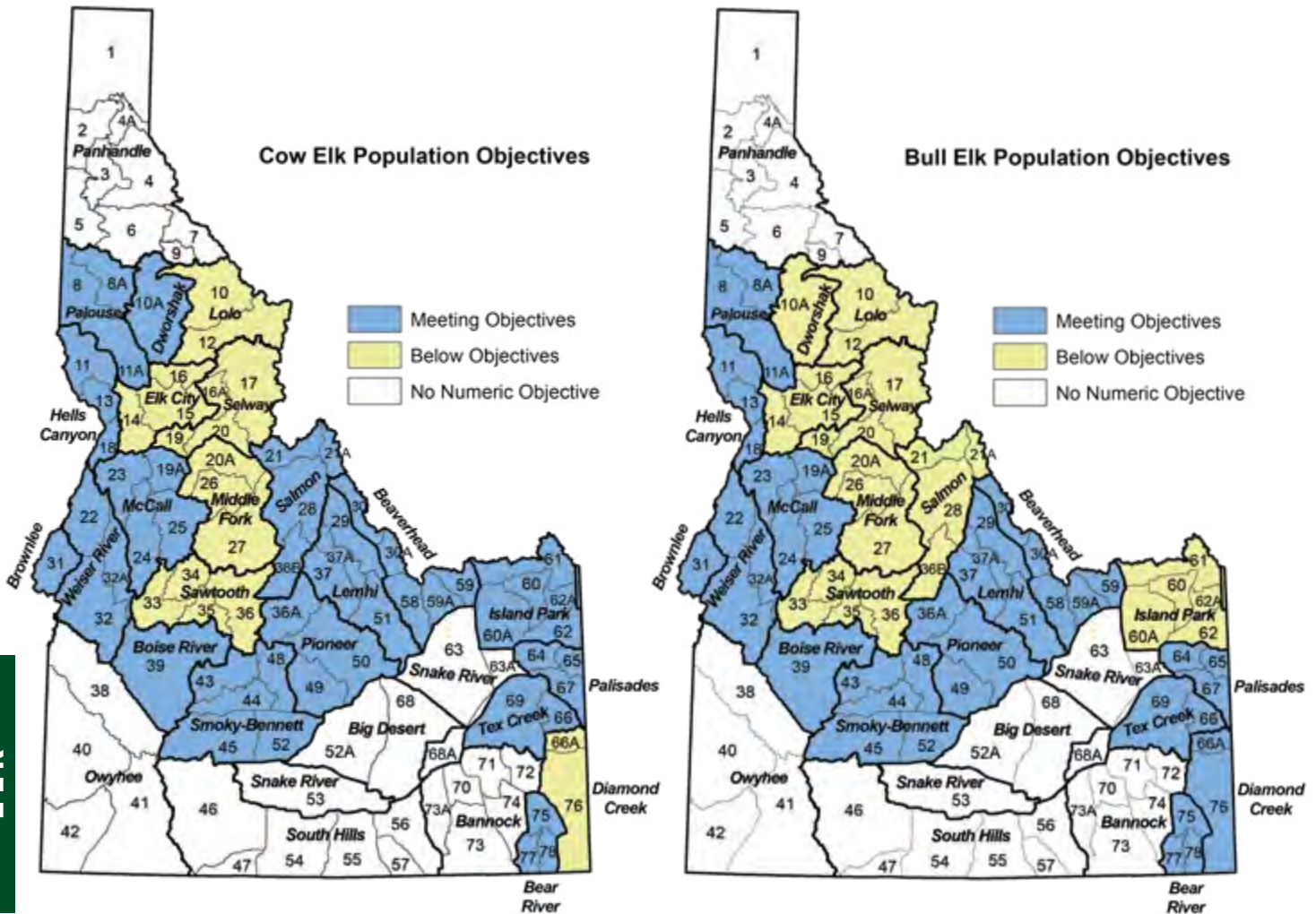


2015 Elk Population Status by Elk Zone



ELK

Elk populations fluctuate constantly in response to weather, predation, land management actions, fire events, invasive species, private land use, and development. To maintain elk hunting experiences desired by sportsmen, the Idaho Department of Fish and Game manages herds within desired ranges by adjusting hunting seasons and hunter numbers to provide high quality hunting opportunities, maintain availability of general season hunts with over-the-counter tag sales, and minimize conflicts with agriculture. Fish and Game also works closely with land managers and private landowners to ensure the existence of high quality elk habitat throughout the state. In 2014 we modified the boundaries of a few elk zones to better match up with elk populations and their seasonal movements.

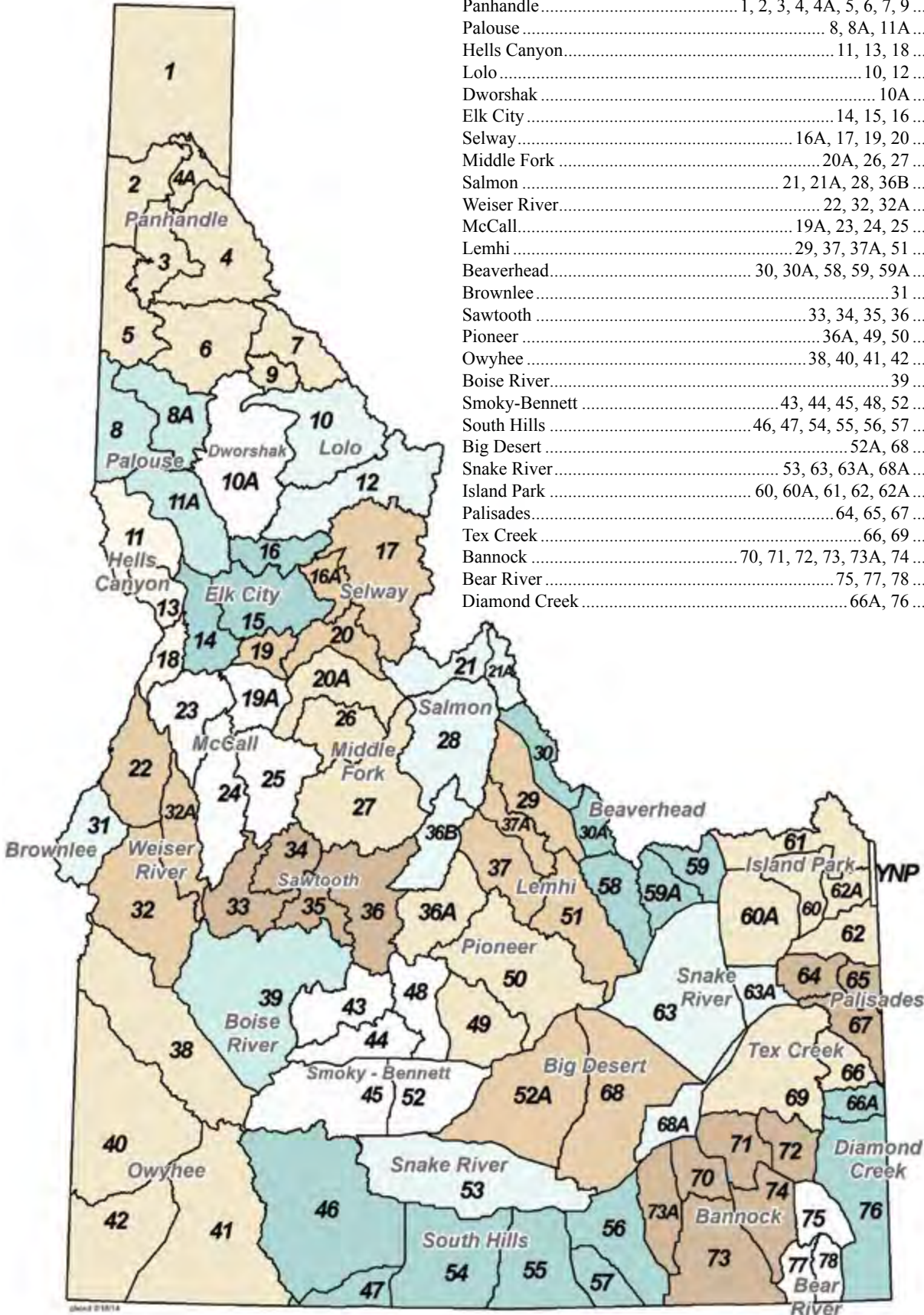
Elk herds currently meet or exceed management objectives in 16 of 22 elk management zones with established numeric objectives for number of cow elk, and in 14 of 22 zones with set objectives for number of bull elk. Hunting opportunities in these zones range from trophy quality bull hunts to “extra” cow hunts. In the handful of zones that are not currently meeting our objectives, we are working hard to improve elk survival and increase the populations by reducing or eliminating cow harvest, adjusting bull harvest, and intensively managing predators to reduce the impacts of predation on those herds.

Changing conditions and management challenges have always been part of the landscape, but with responsive management and more than 107,000 elk, Idaho continues to provide an incredible variety of excellent elk hunting opportunities desired by sportsmen.

For additional information on elk management objectives and hunter success rates, please visit our website at: <http://idfg.idaho.gov/cms/hunt/elk/>

Elk Management Zones

Zone Name	Units	Rules Book Page Number
Panhandle	1, 2, 3, 4, 4A, 5, 6, 7, 9	35
Palouse	8, 8A, 11A	35
Hells Canyon	11, 13, 18	35
Lolo	10, 12	36
Dworshak	10A	36
Elk City	14, 15, 16	36
Selway	16A, 17, 19, 20	37
Middle Fork	20A, 26, 27	37
Salmon	21, 21A, 28, 36B	38
Weiser River	22, 32, 32A	38
McCall	19A, 23, 24, 25	39
Lemhi	29, 37, 37A, 51	39
Beaverhead	30, 30A, 58, 59, 59A	40
Brownlee	31	40
Sawtooth	33, 34, 35, 36	40
Pioneer	36A, 49, 50	41
Owyhee	38, 40, 41, 42	41
Boise River	39	41
Smoky-Bennett	43, 44, 45, 48, 52	42
South Hills	46, 47, 54, 55, 56, 57	42
Big Desert	52A, 68	42
Snake River	53, 63, 63A, 68A	43
Island Park	60, 60A, 61, 62, 62A	43
Palisades	64, 65, 67	43
Tex Creek	66, 69	44
Bannock	70, 71, 72, 73, 73A, 74	44
Bear River	75, 77, 78	44
Diamond Creek	66A, 76	45



2015 & 2016 Elk Hunting Seasons

Elk hunting is managed in 28 elk zones. In addition, Fish and Game has established a two-tag system to offer elk hunters the most general season choices. Hunters may select one zone and choose either an “A tag” or a “B tag” for that zone. A few zones offer only an A tag.

In general, A tags provide more opportunity for muzzleloader and archery hunters, and B tags provide more opportunity for centerfire rifle hunters.

Controlled hunts, allocated by random drawing, also are available in most of the state. Any person who receives a controlled hunt tag for elk is prohibited from hunting in any other elk hunt, **except** for depredation hunts, extra antlerless elk hunts or by buying a leftover nonresident elk tag, if available.

Note: Residents or nonresidents may buy one unsold nonresident general season deer and elk tag at the nonresident price, starting August 1, to be used as a second tag.

Antlered elk: Only elk with at least one antler longer than 6 inches may be taken in any season which is open for antlered elk only. In antlered seasons, including spike-only, antlers must accompany the carcass while in transit.

Antlerless elk: Only elk without antlers or with antlers shorter than 6 inches may be taken in any season which is open for antlerless elk only.

Spike elk: Only elk with no branching on either antler and at least one antler longer than 6 inches may be taken in any season which is open for spike elk only. A branch is an antler projection at least 1 inch long and longer than the width of the projection.

Brow-tined elk: Only elk having at least one antler with a visible point on the lower half of the main beam which is 4 inches or greater in length may be taken in any season open for brow-tined elk only.

Archery & Muzzleloader Permits

Any person hunting in an archery only season must have their license with archery permit validation, including controlled hunts. In a muzzleloader only season, hunters must have a muzzleloader permit validation, including controlled hunts.

Youth Hunt Only: See page 105 for more information.

Junior Resident General Elk Tag

Junior resident elk hunters who purchase a general season elk zone tag while they are between ages 10 and 17, inclusive, may participate in any A or B tag elk season within the specified zone, regardless of whether they purchased an A tag or B tag. All other season, weapon restrictions, and commission rules apply. Controlled hunts are excluded.

Nonresident Deer and Elk Tags

Nonresident deer and elk tags, **excluding** Nonresident Junior Mentored/DAV deer and elk tags, are valid to take a black bear, mountain lion or gray wolf instead of a deer or elk, if a season is open for that species, where and when the deer or elk tag is valid, and if there is an open deer or elk season in that same unit. See page 110.

For information on Chronic Wasting Disease please see page 31.



Legal in spike elk hunts

Spike Elk

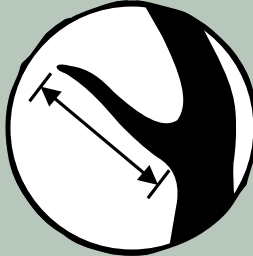
One antler must be at least 6 inches or longer. (Not legal in brow-tined elk hunts.)



Not legal in spike elk hunts or brow-tined elk hunts

Branch antlered bull (or larger)

Not legal for spike-only hunts if branched point is longer than 1 inch.



Antler branch is a projection 1 inch or more in length.

Legal in brow-tined elk hunts



Caution - Archers and Muzzleloaders:

“Any weapon” hunts will be open during the archery or muzzleloader season in all or parts of the following zones: Palouse, Salmon, Weiser River, McCall, Lemhi, Beaverhead, Pioneer, Boise River, Smoky-Bennett and South Hills. Please use appropriate caution.

Panhandle Zone (Units 1, 2, 3, 4, 4A, 5, 6, 7, 9)

	September	October	November	December
A Tag	Archery only — antlered only Sep 6 - Sep 30	Any weapon — antlered only Oct 25 - Oct 29	Muzzleloader only — antlered only Unit 4 only Nov 20 - Dec 1	Archery only — antlered only Dec 10 - Dec 16
B Tag	Archery only — antlered only Sep 6 - Sep 12	Any weapon — antlered only Oct 10 - Oct 24		Muzzleloader only — spike only Dec 2 - Dec 9

Palouse Zone (Units 8, 8A, 11A)

	August/September	October	November	December
A Tag	Any weapon — antlerless only Within 1 mile of private cultivated fields outside National Forest System Boundary, See Note 2, Page 45 Aug 1 - Sep 15 Archery only — any elk Aug 30 - Sep 30 See archers caution Page 34			Muzzleloader only — spike or antlerless Unit 8A only Dec 2 - Dec 14 See Note 1, Page 45
B Tag	Archery only — spike or antlerless Aug 30 - Sep 14 See archers caution Page 34	Any weapon — antlered only Oct 10 - Oct 24 Any weapon — any elk Oct 15 - Oct 21 Private Lands only, excluding corporate timber lands		

Hells Canyon Zone (Units 11, 13, 18) — Controlled Hunts Only

A Tag	No A Tags in this Zone — See Controlled Hunts
B Tag	No B Tags in this Zone — See Controlled Hunts

Lolo Zone (Units 10, 12)

	August/September	October	November	December
A Tag	Archery only — antlered only Aug 30 - Sep 30			
	Note: 404 A Tag Quota Available First-Come, First-Served.			
		2015 Capped tags go on sale for Residents 7/10/2015 and Nonresidents 12/1/2014. 2016 Capped tags go on sale for Residents 7/10/2016 and Nonresidents 12/1/2015.		
B Tag		Any weapon — antlered only Oct 10 - Nov 3		
	Note: 1,088 B Tag Quota Available First-Come, First-Served.			
		2015 Capped tags go on sale for Residents 7/10/2015 and Nonresidents 12/1/2014. 2016 Capped tags go on sale for Residents 7/10/2016 and Nonresidents 12/1/2015.		

Dworshak Zone (Unit 10A)

	August/September	October	November	December
A Tag	Archery only — any elk Aug 30 - Sep 30			Muzzleloader only — spike or antlerless: Dec 2 - Dec 5 spike only: Dec 6 - Dec 14
B Tag	Archery only — spike or antlerless Aug 30 - Sep 14	Any weapon — antlered only Oct 10 - Nov 3		
	Note: 2,380 B Tag Quota Available First-Come, First-Served.			
		2015 Capped tags go on sale for Residents 7/10/2015 and Nonresidents 12/1/2014. 2016 Capped tags go on sale for Residents 7/10/2016 and Nonresidents 12/1/2015.		

Elk City Zone (Units 14, 15, 16)

	August/September	October	November	December
A Tag	Archery only — any elk Unit 15 only Aug 30 - Sep 30		Muzzleloader only — spike or antlerless Unit 14 & 16 only Nov 21 - Dec 9	Archery only — any elk Unit 15 only Dec 5 - Dec 20
B Tag	Archery only — spike or antlerless Unit 15 only Aug 30 - Sep 14	Any weapon — antlered only Oct 10 - Oct 24		
	Note: 1,790 B Tag Quota Available First-Come, First-Served.			
		2015 Capped tags go on sale for Residents 7/10/2015 and Nonresidents 12/1/2014. 2016 Capped tags go on sale for Residents 7/10/2016 and Nonresidents 12/1/2015.		

Selway Zone (Units 16A, 17, 19, 20)

	September	October	November	December
A Tag		Any weapon — antlered only Oct 1 - Oct 31		
	Note: 647 A Tag Quota Available First-Come, First-Served.			
B Tag	Any weapon — antlered only Sep 15 - Sep 30		Any weapon — antlered only Nov 1 - Nov 11	
	Note: 1,067 B Tag Quota Available First-Come, First-Served.			
	2015 Capped tags go on sale for Residents 7/10/2015 and Nonresidents 12/1/2014.			
	2016 Capped tags go on sale for Residents 7/10/2016 and Nonresidents 12/1/2015.			

Middle Fork Zone (Units 20A, 26, 27)

	September	October	November	December
A Tag		Any weapon — Units 20A & 26: antlered only Unit 27: brow-tined bulls only Oct 1 - Oct 31		
	Note: 1,551 A Tag Quota Available First-Come, First-Served.			
B Tag	Any weapon — Units 20A & 26: antlered only Unit 27: brow-tined bulls only Sep 15 - Sep 30		Any weapon — Units 20A & 26: antlered only Unit 27: brow-tined bulls only Nov 1 - Nov 18	
	Note: 1,636 B Tag Quota Available First-Come, First-Served.			
	2015 Capped tags go on sale for Residents 7/10/2015 and Nonresidents 12/1/2014.			
	2016 Capped tags go on sale for Residents 7/10/2016 and Nonresidents 12/1/2015.			

Salmon Zone (Units 21, 21A, 28, 36B)			
	August/September	October	November
A Tag	<p>Any weapon — antlerless only Units 21A, 28 & 36B only Aug 1 - Sep 30 Within 1 mile of private cultivated fields outside National Forest System Boundary, See Note 2, Page 45</p> <p>Archery only — any elk Units 21, 21A & 36B only Aug 30 - Sep 30 See archers caution Page 34</p>		<p>Archery only — any elk Unit 28 only Dec 1 - Dec 31</p>
B Tag	<p>Note: 2,507 B Tag Quota Available First-Come, First-Served.</p>	<p>Any weapon — antlered only Oct 15 - Nov 8</p> <p>2015 Capped tags go on sale for Residents 7/10/2015 and Nonresidents 12/1/2014. 2016 Capped tags go on sale for Residents 7/10/2016 and Nonresidents 12/1/2015.</p>	

Weiser River Zone (Units 22, 32, 32A)			
	August/September	October	November
A Tag	<p>Any weapon — antlerless only Units 22 & 32A only: Aug 15 - Sep 30 Outside National Forest System Boundary only, See Note B below, <i>Extremely Limited Access</i></p> <p>Archery only — any elk Aug 30 - Sep 30 See Note A below, See archers caution Page 34, Motorized Hunting Rule Applies in Units 32 & 32A, See Pages 101 - 103</p>		
B Tag		<p>Any weapon — antlered only Oct 25 - Nov 3 Motorized Hunting Rule Applies in Units 32 & 32A, See Pages 101 - 103 Short range weapons only on Montour WMA</p>	

Note A - Closed area: That portion of Unit 32 west of the following boundary: Beginning at the Unit 32/38 boundary at Emmett, then north on Highway 52 to the Van Dussen Road, then north on the Four Mile Road to the Unit 32/32A boundary is **closed**.

Note B - Open areas: That portion of Unit 22 that lies outside National Forest System Boundary and drains into the Weiser River, upstream from and including the Pine Creek drainage and downstream from and including the West Fork Weiser River drainage but excluding the entire Lost Creek Drainage. That portion of Unit 32A that lies outside National Forest System Boundary and drains into the Weiser River upstream from and including the Middle Fork Weiser River drainage and downstream from but excluding the East Fork Weiser River drainage. Most elk are on private property in this area. The National Forest System Boundary is a legislatively set boundary - it is not necessarily the boundary of Forest Service property. State, private, and other lands within the National Forest System Boundary are not open to hunting during this season. (Please refer to a U.S. Forest Service map for the location of this boundary.)

McCall Zone (Units 19A, 23, 24, 25)

	August/September	October	November	December
A Tag	Short range weapons only — antlerless only Units 23 & 24 only Outside National Forest System Boundary, See Note B below Aug 15 - Sep 30	Any weapon — spike only Short range weapons only within described boundaries in Unit 24, See Note A below Oct 5 - Oct 14	Muzzleloader only — antlerless only Units 23 & 24 only Nov 10 - Nov 30	
	Archery only — any elk Aug 30 - Sep 30 See archers caution Page 34			
B Tag	Any weapon — antlered only Oct 15 - Nov 3 Short range weapons only within described boundaries, See Note A below.			

Note A - Short range weapons **only** in that portion of Unit 24 within the following boundary: Beginning in McCall at the junction of State Highway 55 and Boydston Street, then south on Boydston Street to West Valley Road, then west and south along West Valley Road and West Mountain Road to Cabarton Road, then north on Cabarton Road to State Highway 55, then north on State Highway 55 to Farm-To-Market Road, then north on Farm-To-Market Road to Elo Road, then west on Elo Road to State Highway 55, then north on State Highway 55 to the point of beginning.

Note B - You may hunt only outside the National Forest System Boundary. The National Forest System Boundary is a legislatively set boundary - it is not necessarily the boundary of Forest Service property. State, private, and other lands within the National Forest System Boundary are not open to hunting during this season. (Please refer to a U.S. Forest Service map for the location of this boundary.)

Lemhi Zone (Units 29, 37, 37A, 51)

	August/September	October	November	December
A Tag	Any weapon — antlerless only Aug 1 - Sep 30 Within 1 mile of private cultivated fields outside National Forest System Boundary. See Note 2, Page 45, Motorized Hunting Rule Applies, See Pages 101 - 103		Muzzleloader only — antlerless only Nov 25 - Dec 9 Motorized Hunting Rule Applies, See Pages 101 - 103	
	Archery only — any elk Aug 30 - Sep 30 See archers caution Page 34 , Motorized Hunting Rule Applies, See Pages 101 - 103		Any weapon — spike only Units 37 & 51 only Nov 1 - Nov 7 Motorized Hunting Rule Applies, See Pages 101 - 103	
B Tag	No B Tags in this Zone — See Controlled Hunts			

Beaverhead Zone (Units 30, 30A, 58, 59, 59A)

	August/September	October	November	December
A Tag	<p>Any weapon — antlerless only Unit 30 only: Aug 1 - Sep 30 Within 1 mile of private cultivated fields outside National Forest System Boundary, See Note 2, Page 45, Motorized Hunting Rule Applies, See Pages 101 - 103</p> <p>Archery only — any elk Aug 30 - Sep 30 See archers caution Page 34, Motorized Hunting Rule Applies, See Pages 101 - 103</p>	<p>Muzzleloader only — antlerless only Oct 15 - Oct 31 Motorized Hunting Rule Applies, See Pages 101 - 103</p>		

B Tag No B Tags in this Zone — See Controlled Hunts

Brownlee Zone (Unit 31)

	August/September	October	November	December
A Tag	<p>Archery only — any elk Aug 30 - Sep 30</p>			

B Tag No B Tags in this Zone — See Controlled Hunts

Sawtooth Zone (Units 33, 34, 35, 36)

	August/September	October	November	December
A Tag	<p>Archery only — any elk Aug 30 - Sep 30</p> <p>Note: 566 A Tag Quota Available First-Come, First-Served.</p>		<p>2015 Capped tags go on sale for Residents 7/10/2015 and Nonresidents 12/1/2014. 2016 Capped tags go on sale for Residents 7/10/2016 and Nonresidents 12/1/2015.</p>	

B Tag Any weapon — antlered only
Oct 15 - Nov 8

Note: 1,526 B Tag Quota Available First-Come, First-Served.
2015 Capped tags go on sale for Residents 7/10/2015 and Nonresidents 12/1/2014.
2016 Capped tags go on sale for Residents 7/10/2016 and Nonresidents 12/1/2015.

Pioneer Zone (Units 36A, 49, 50)

	August/September	October	November	December
A Tag	<p>Any weapon — antlerless only Units 36A & 50 only: Aug 1 - Sep 30 Within 1 mile of private cultivated fields outside National Forest System Boundary. See Note 2, Page 45, Motorized Hunting Rule Applies, See Pages 101 - 103</p> <p>Archery only — any elk Aug 30 - Sep 30 See archers caution Page 34, Motorized Hunting Rule Applies, See Pages 101 - 103</p>		<p>Muzzleloader only — antlerless only Nov 1 - Nov 14 Units 36A & 50 only Motorized Hunting Rule Applies, See Pages 101 - 103</p>	

B Tag No B Tags in this Zone — See Controlled Hunts

Owyhee Zone (Units 38, 40, 41, 42) — Controlled Hunts Only

	August/September	October	November	December
A Tag	No A Tags in this Zone — See Controlled Hunts			
B Tag	No B Tags in this Zone — See Controlled Hunts			

Boise River Zone (Unit 39)

	September	October	November	December
A Tag			<p>Archery only — any elk Nov 10 - Nov 30 See Note 3, Page 45, See archers caution Page 34</p>	
B Tag			<p>Any weapon — antlered only Nov 1 - Nov 9 Portion of Unit closed, See Note 4, Page 45</p>	

Smoky-Bennett Zone (Units 43, 44, 45, 48, 52)

	August/September	October	November	December
A Tag	<p>Archery only — any elk Units 43 & 48 only Aug 30 - Sep 30 See archers caution Page 34</p>		<p>Any weapon — spike only Units 43, 44 & 48 only Nov 1 - Nov 7</p>	
B Tag	<p>Muzzleloader only — antlerless only Units 45 & 52 only Sep 1 - Sep 14 Motorized Hunting Rule Applies, See Pages 101 - 103</p>			

South Hills Zone (Units 46, 47, 54, 55, 56, 57)

	August/September	October	November	December
A Tag	<p>Archery only — any elk Units 55, 56 & 57 only Aug 30 - Sep 30 See archers caution Page 34 Motorized Hunting Rule Applies in Unit 56, See See Pages 101 - 103</p>		<p>Muzzleloader only — antlerless only Unit 56 only Nov 1 - Nov 14 See muzzleloaders caution Page 34 Motorized Hunting Rule Applies, See Pages 101 - 103</p>	
B Tag	<p>Any weapon — antlerless only Aug 1 - Aug 29 Within 1 mile of private cultivated fields outside National Forest System Boundary, See Note 2, Page 45 Motorized Hunting Rule Applies in Units 47 & 56, See Pages 101 - 103</p>			

Big Desert Zone (Units 52A, 68)

	August/September	October	November	December
A Tag	<p>Archery only — any elk Aug 30 - Sep 30 Motorized Hunting Rule Applies in Unit 52A, See Pages 101 - 103</p>			
B Tag	<p>No B Tags in this Zone — See Controlled Hunts</p>			

Snake River Zone (Units 53, 63, 63A, 68A)

	August/September	October	November	December
	Archery only — any elk Unit 68A only: Aug 1 - Sep 30		Any weapon — antlerless only Unit 63 only: Sep 1 - Dec 31 Short range weapons only on Mud Lake WMA	
A Tag	Any weapon — any elk Unit 63 only: Aug 1 - Aug 31 Short range weapons only on Mud Lake WMA		Short range weapons only — antlerless only Unit 63A only: Sep 1 - Nov 30	
	Short range weapons only — any elk Unit 63A only: Aug 1 - Aug 31		Archery only — antlerless only Unit 68A only: Oct 1 - Dec 31	
		Short range weapons only — any elk Unit 53 only: Aug 1 - Dec 31 Motorized Hunting Rule Applies, See Pages 101 - 103		
B Tag	No B Tags in this Zone — See Controlled Hunts			

Island Park Zone (Units 60, 60A, 61, 62, 62A)

	August/September	October	November	December
A Tag	Archery only — any elk Aug 30 - Sep 30	Any weapon — spike only Oct 15 - Oct 28 Short range weapons only on Chester Wetlands WMA		Muzzleloader only — spike or antlerless Unit 61 only Nov 11 - Dec 9
B Tag	No B Tags in this Zone — See Controlled Hunts			

Palisades Zone (Units 64, 65, 67)

	August/September	October	November	December
A Tag	Archery only — any elk Aug 30 - Sep 30		Any weapon — antlerless only Oct 22 - Nov 16	
B Tag	Archery only — spike or antlerless Aug 30 - Sept 14	Any weapon — antlered only Oct 15 - Oct 21		

Tex Creek Zone (Units 66, 69)

	August/September	October	November	December
A Tag	Archery only — any elk Aug 30 - Sep 30 Motorized Hunting Rule Applies, See Pages 101 - 103	Any weapon — antlerless only Oct 22 - Nov 16 Motorized Hunting Rule Applies, See Pages 101 - 103		
B Tag	Archery only — spike or antlerless Aug 30 - Sep 14 Motorized Hunting Rule Applies, See Pages 101 - 103	Any weapon — antlered only Oct 15 - Oct 21 Motorized Hunting Rule Applies, See Pages 101 - 103		

Bannock Zone (Units 70, 71, 72, 73, 73A, 74)

	August/September	October	November	December
A Tag	Archery only — any elk Aug 30 - Sep 30 Motorized Hunting Rule Applies in Units 70, 72 & 73, See Pages 101 - 103	Any weapon — antlerless only Oct 25 - Nov 15 Motorized Hunting Rule Applies in Units 70, 72 & 73, See Pages 101 - 103	Muzzleloader only — antlerless only Nov 16 - Nov 30 Motorized Hunting Rule Applies in Units 70, 72 & 73, See Pages 101 - 103	
B Tag	No B Tags in this Zone — See Controlled Hunts			

Bear River Zone (Units 75, 77, 78)

	August/September	October	November	December
A Tag	Archery only — any elk Aug 30 - Sep 30 Motorized Hunting Rule Applies, See Pages 101 - 103	Any weapon — antlerless only Oct 25 - Nov 15 Motorized Hunting Rule Applies, See Pages 101 - 103		Muzzleloader only — antlerless only Dec 1 - Dec 31 Motorized Hunting Rule Applies, See Pages 101 - 103
B Tag	Archery only — spike or antlerless Aug 30 - Sep 14 Motorized Hunting Rule Applies, See Pages 101 - 103	Any weapon — antlered only Oct 15 - Oct 24 Motorized Hunting Rule Applies, See Pages 101 - 103		
	Note: 550 B Tag Quota Available First-Come, First-Served.			
	2015 Capped tags go on sale for Residents 7/10/2015 and Nonresidents 12/1/2014. 2016 Capped tags go on sale for Residents 7/10/2016 and Nonresidents 12/1/2015.			

Diamond Creek Zone (Units 66A, 76)

	August/September	October	November	December
A Tag	<p>Archery only — any elk Aug 30 - Sep 30 Motorized Hunting Rule Applies, See Pages 101 - 103</p>			
	<p>Note: 1,836 A Tag Quota Available First-Come, First-Served. 2015 Capped tags go on sale for Residents 7/10/2015 and Nonresidents 12/1/2014. 2016 Capped tags go on sale for Residents 7/10/2016 and Nonresidents 12/1/2015.</p>			
B Tag	No B Tags in this Zone — See Controlled Hunts			

ELK GENERAL SEASON SPECIAL AREA DESCRIPTIONS

- **Note 1 — Unit 8A Muzzleloader Spike or Antlerless Hunt** — That portion of Unit 8A east of State Highway 6 and State Highway 9 and north of the following line: Beginning at the boundary of Unit 8A at its junction with State Highway 8 at Deary, then east on Highway 8 to Forest Service Road 1963 at Helmer, then south and east on Forest Service Road 1963 to Long Meadow Creek, then southeast on Long Meadow Creek to Dworshak Reservoir, then east along the shoreline of Dworshak Reservoir to the Unit 8A boundary at Dent Bridge.
- **Note 2 — Outside the National Forest System Boundary in Palouse, Salmon, Lemhi, Beaverhead, Pioneer and South Hills Zones: — Antlerless Hunts:** These hunts are open only outside the National Forest System Boundary within 1 mile of private fields on which cultivated crops are currently growing. The National Forest System Boundary is a legislatively set boundary — it is not necessarily the boundary of Forest Service property. State, private and other lands within the National Forest System Boundary are not open to hunting during this season. (Please refer to a U.S. Forest Service map for the location of this boundary.) “Private fields on which cultivated crops are currently growing” is defined as: fields on which soil has been used or broken up for the raising of crops, and artificially irrigated pasture. “Currently” means during the current or most recent growing season. Lands enrolled in the Conservation Reserve Program (CRP) or other set-aside farm programs are specifically excluded.
- **Note 3 — Unit 39 Archery Hunt CLOSED Area:** That portion of Unit 39 within Ada County, and that portion of Unit 39 within the following boundary: Beginning at the intersection of State Highway 21 and the Middle Fork Boise River Road (Forest Road 268), east on Forest Road 268 to Cottonwood Creek-Thorn Creek Road (Forest Road 377), to South Fork of Thorn Creek to confluence of Thorn Creek, north and west on Thorn Creek to the confluence with Mores Creek, south and west along the center of Mores Creek including the Mores Creek arm of Lucky Peak Reservoir to Highway 21 to the point of beginning is closed.
- **Note 4 — Portion of Unit 39 closed:** That portion of Unit 39 south and east of Blacks Creek Road and south of the South Fork of Boise River is closed.