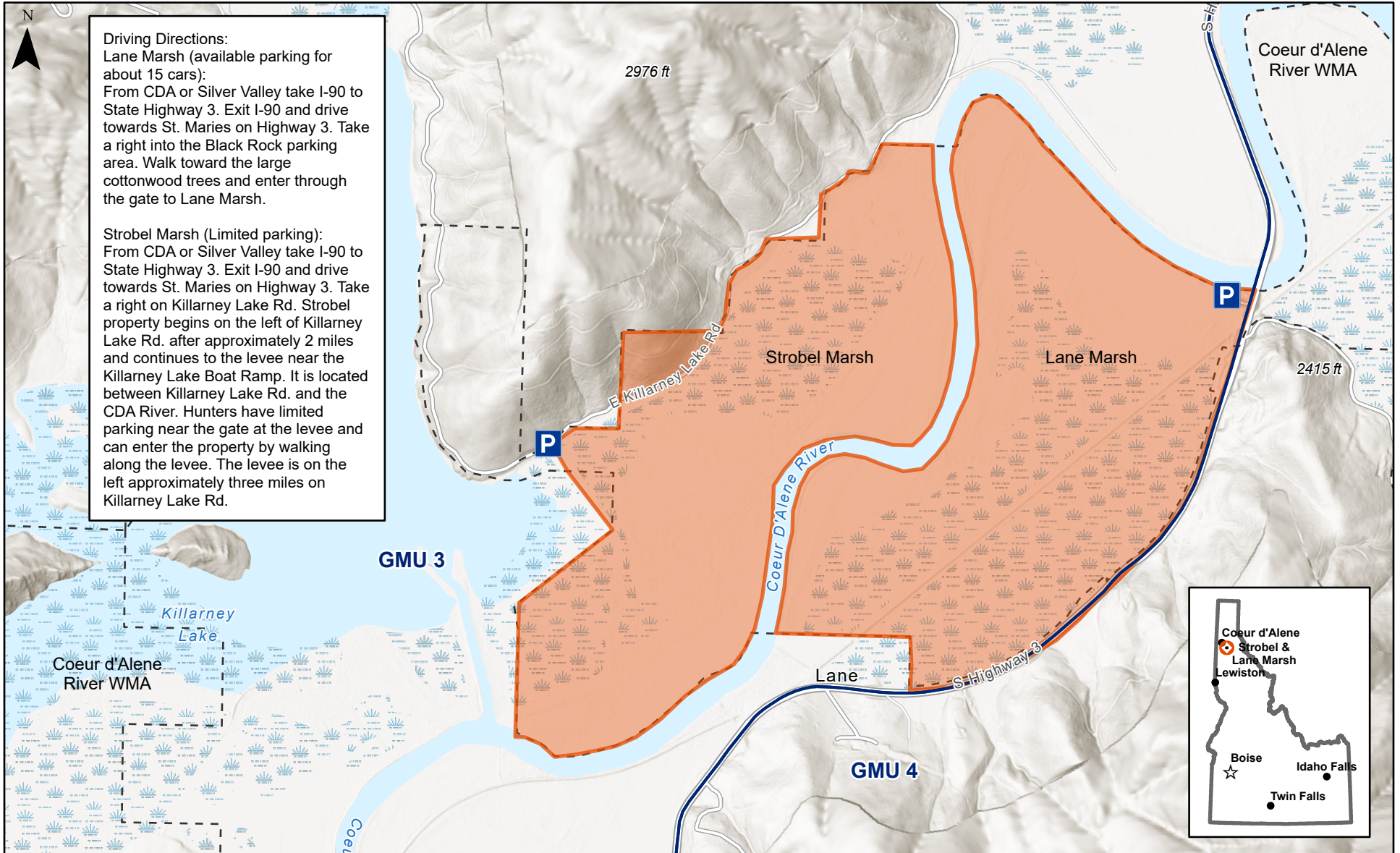
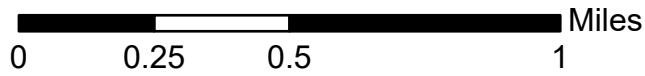


Pheasant Release Area - Strobel and Lane Marsh - Coeur d'Alene River WMA



Driving Directions:
Lane Marsh (available parking for about 15 cars):
 From CDA or Silver Valley take I-90 to State Highway 3. Exit I-90 and drive towards St. Maries on Highway 3. Take a right into the Black Rock parking area. Walk toward the large cottonwood trees and enter through the gate to Lane Marsh.

Strobel Marsh (Limited parking):
 From CDA or Silver Valley take I-90 to State Highway 3. Exit I-90 and drive towards St. Maries on Highway 3. Take a right on Killarney Lake Rd. Strobel property begins on the left of Killarney Lake Rd. after approximately 2 miles and continues to the levee near the Killarney Lake Boat Ramp. It is located between Killarney Lake Rd. and the CDA River. Hunters have limited parking near the gate at the levee and can enter the property by walking along the levee. The levee is on the left approximately three miles on Killarney Lake Rd.



- Pheasant Stocking Area
- Wildlife Management Area
- P Parking



Map date: 9/14/2020. For the most current information about seasons, limits, stocking schedule, shooting hours, and access rules, please visit the IDFG website at: <https://idfg.idaho.gov/hunt/pheasant/stocking>