

Idaho Preliminary Priority and General Sage-grouse Habitat Update: Version 2

April 2012

Paul Makela, Wildlife Biologist
and Don Major, Landscape and Fire Ecologist
Branch of Resources and Science
Idaho BLM State Office

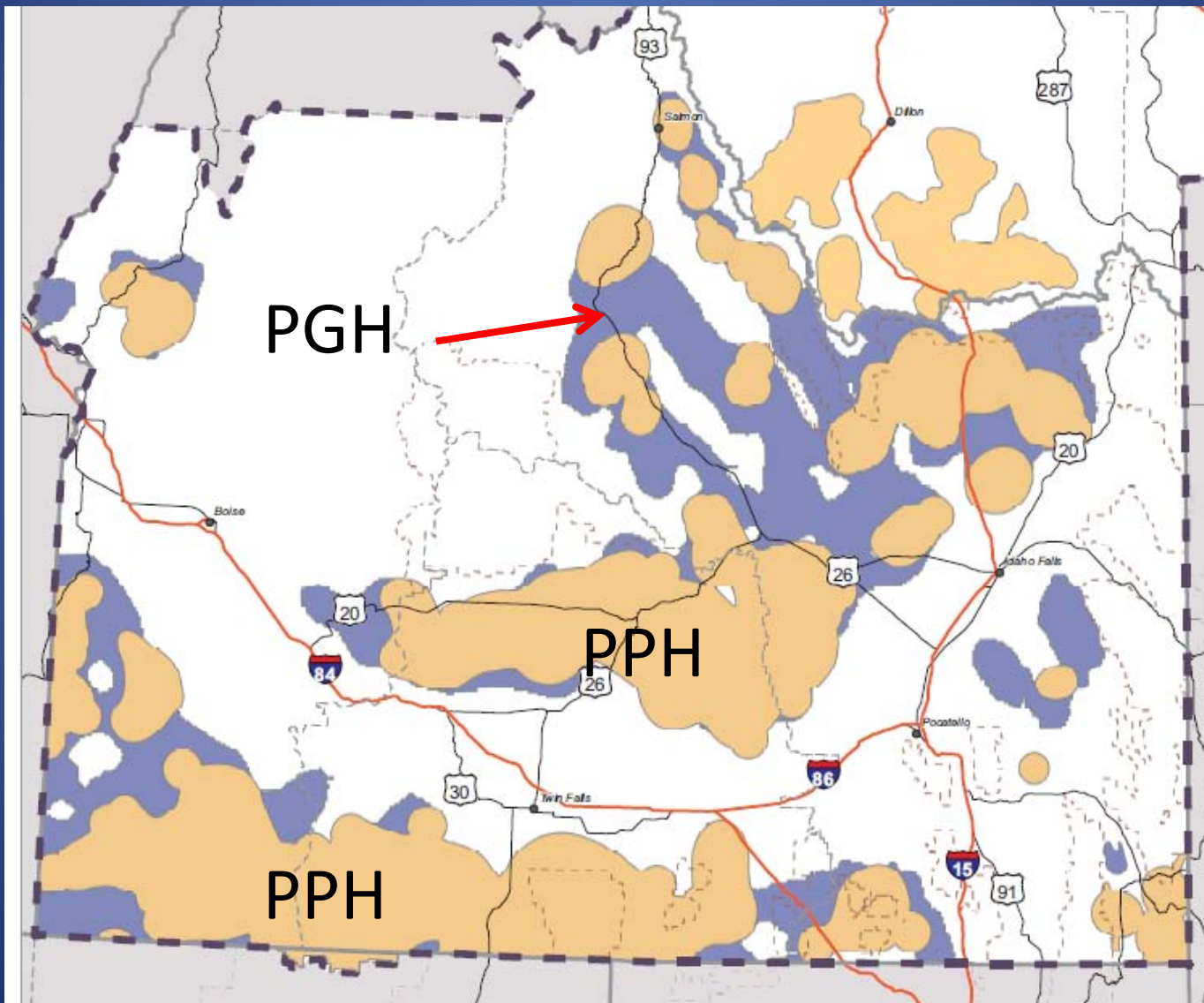


Objective

- Brief overview of Version 1 PPH/PGH
- Update on Version 2 PPH/PGH
- Comparison of final 2012 Idaho PPH/PGH map with adjacent states maps
- Questions?

“Version 1” PPH/PGH Map

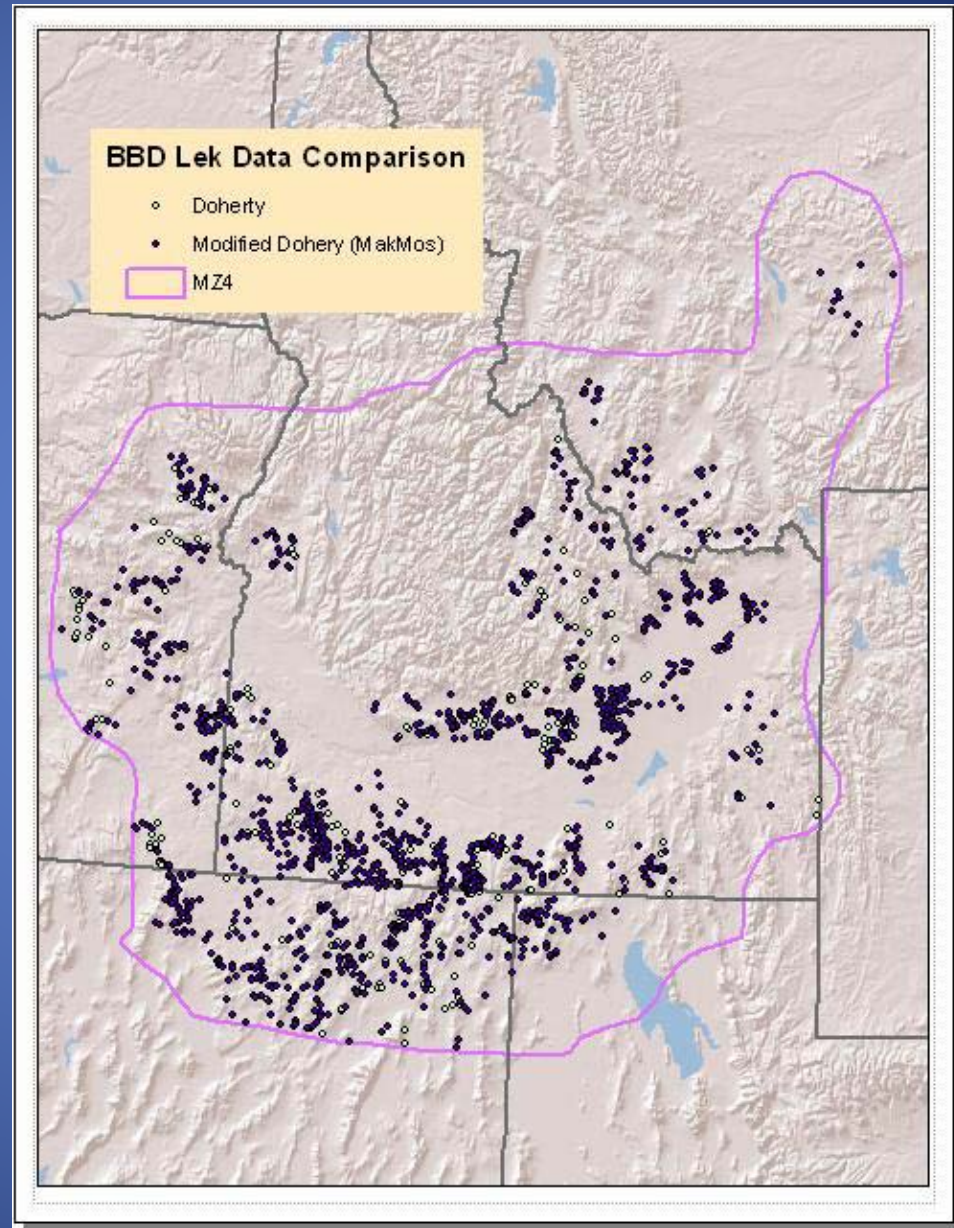
Used in Winter 2012 Scoping



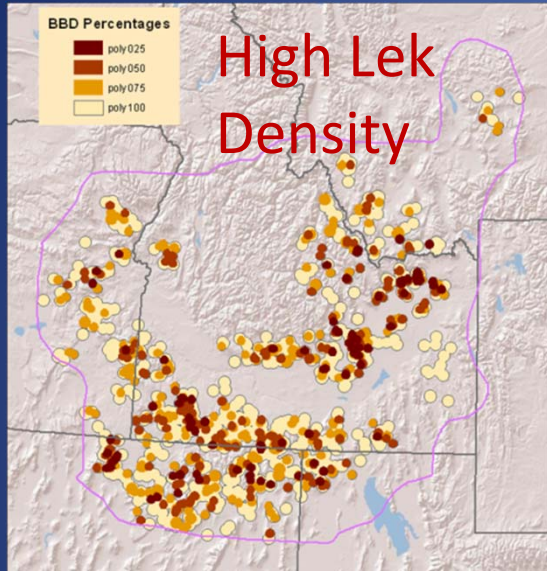
Version 1

Starting Point:

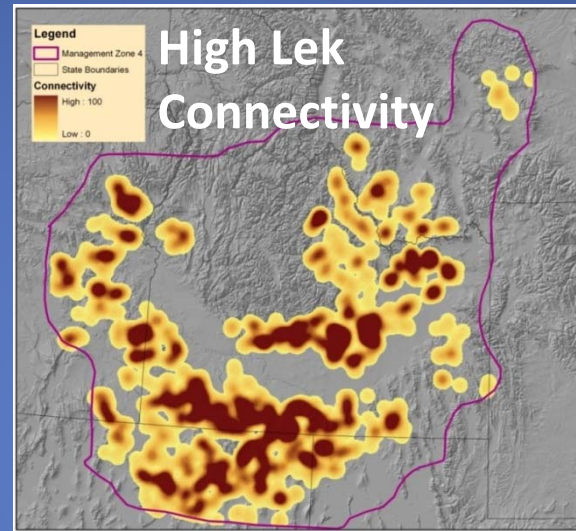
- Management Zone IV boundary
- Occupied leks
 - Past 5 yrs
 - Max count
 - ≥ 2 males



75% Breeding Density Model



75% Lek Connectivity Model

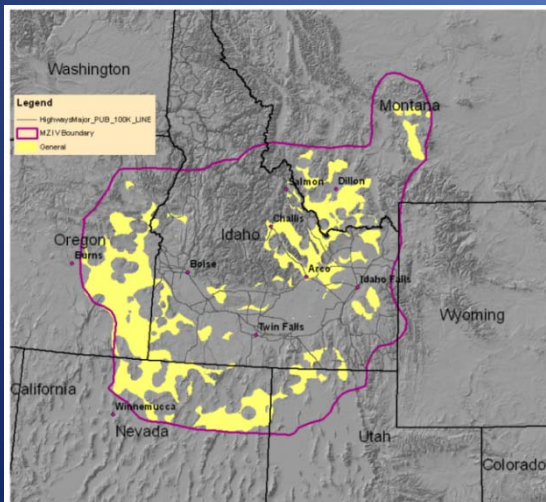


+

=

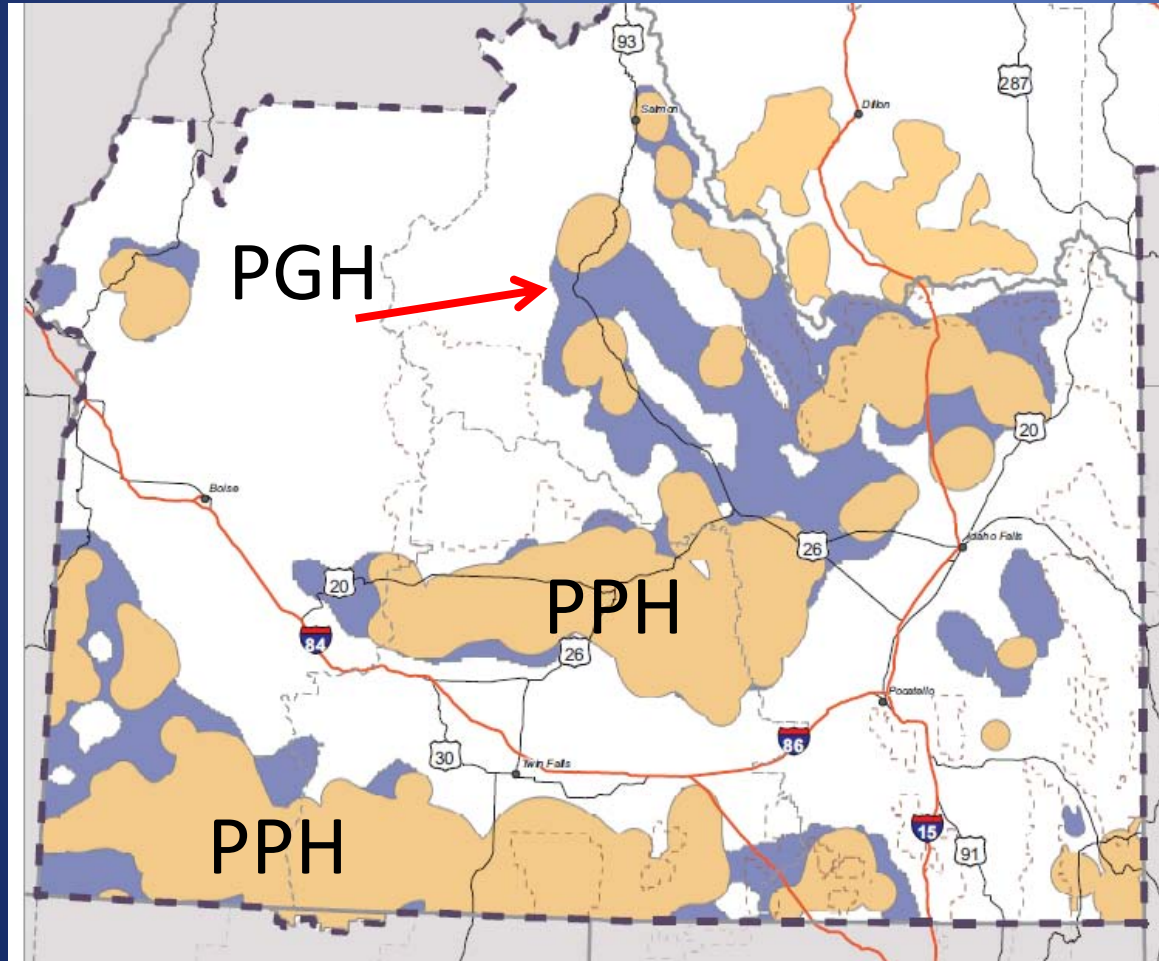
PPH

Sagebrush outside of PPH = PGH



Used WAFWA sage-grouse Management Zone IV as analysis boundary

Version 1 PPH/PGH Map

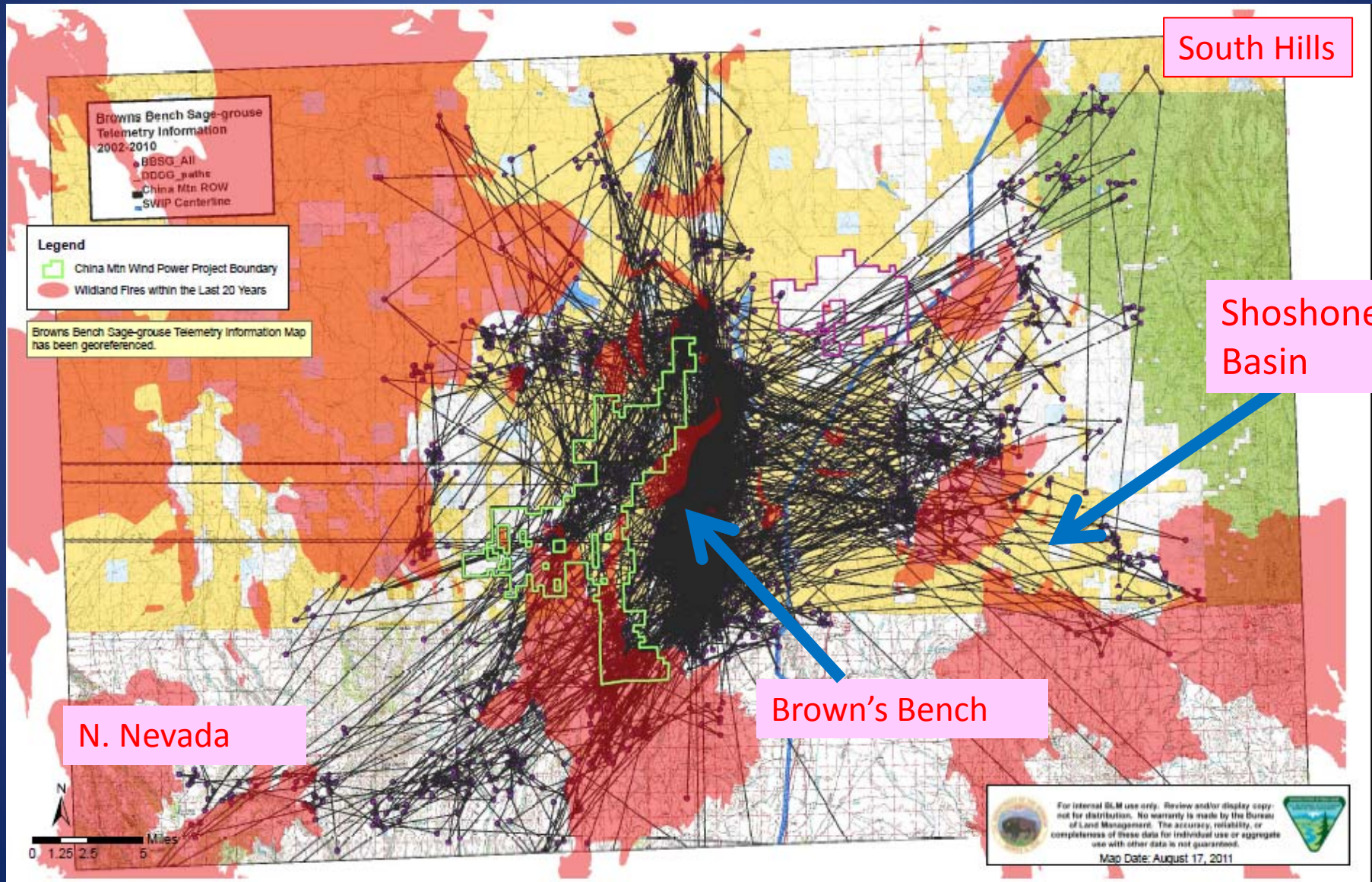


- Generalized polygons
- Encompasses habitat and non-habitat
 - Lek buffer for BBD 6.4 km (4 miles)
 - Buffer for lek connectivity 18 km (11 miles)

Version 1 PPH Limitations

- Overlap with agriculture and timber lands
- Missed some locally important leks (n=9)
- Missed some important connectivity and movement habitat
- Missed some important seasonal habitats
- Missed portions of locally mapped priority areas
- Needed US Forest review

Concerns Validated by Sage-grouse Telemetry: Landscape-scale Movements

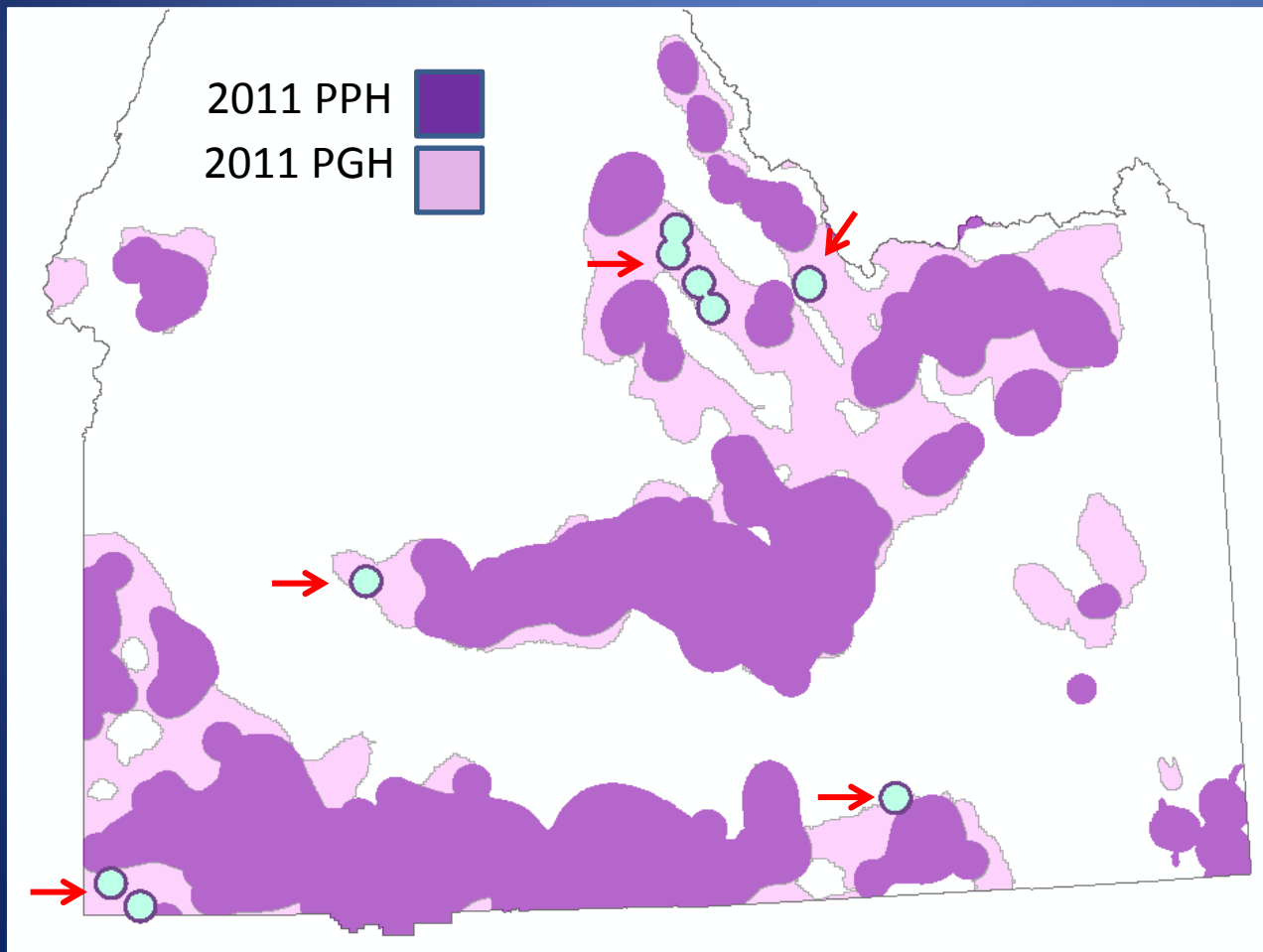


Version 2 Rule Set

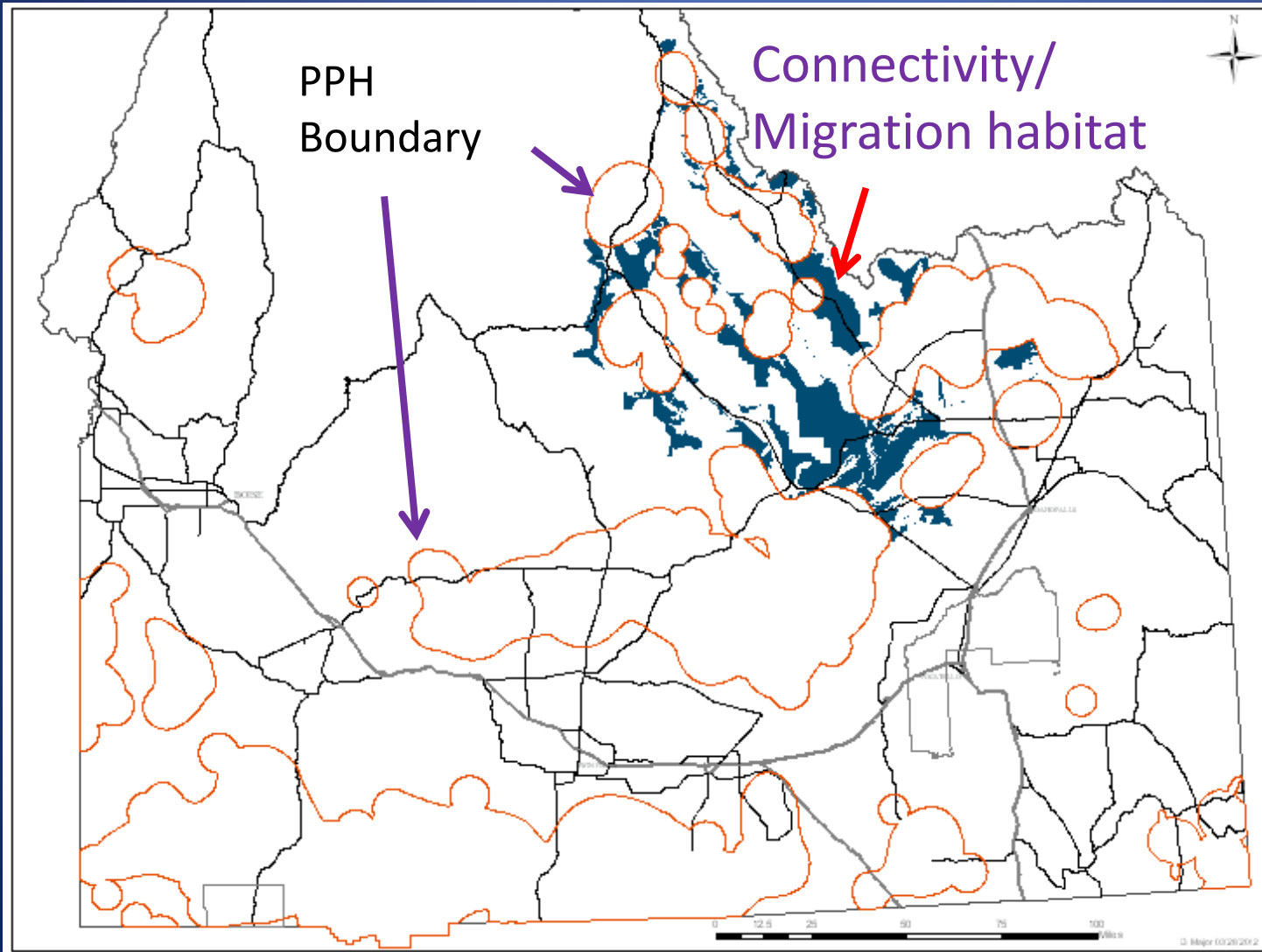
- **See white paper for full details!:**
 - **9 Leks added that were just outside 75% BBD = PPH**
 - **Refined with 2011 Idaho Sage-grouse Habitat Map**
 - Key habitat within or touching original = PPH
 - Perennial Grassland or Conifer Encroachment within original = PPH
 - Perennial Grassland or Conifer Encroachment outside original = PGH
 - **Winter or Breeding habitat (IDFG draft data; NMV LWG draft plan) within or touching=PPH**
 - **USFS edits (data had seasonal habitats assigned) by FS:**
 - Breeding or winter = PPH
 - Within migration/movement = PPH
 - Summer/fall = PGH
 - **Agriculture and conifer (=timber/woodland) Filters**
 - Removed agriculture and conifer from PPH (Aldridge et al. 2008 Doherty et al 2008)
 - Sagebrush, perennial grass or conifer WITHIN the filters was classified as PGH (due to influence by ag or conifer on the habitat)

Additional Leaks:

BLM and IDFG field specialists identified a subset (n=9) of “important” high male attendance leks (●) that were not included in the 2011 PPH area designations.



Important Movement and Migration Corridors:

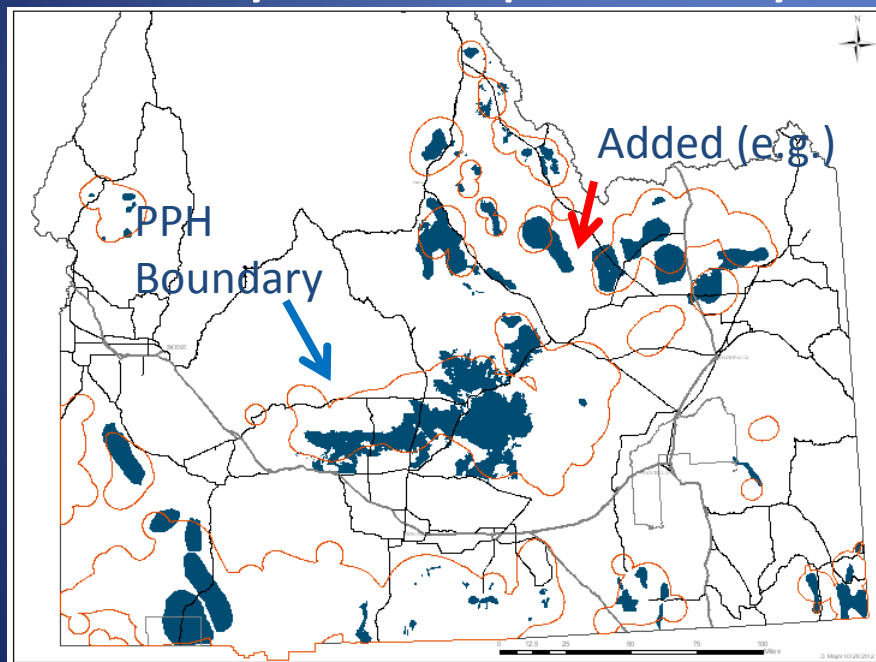


Used telemetry data, expert Knowledge.

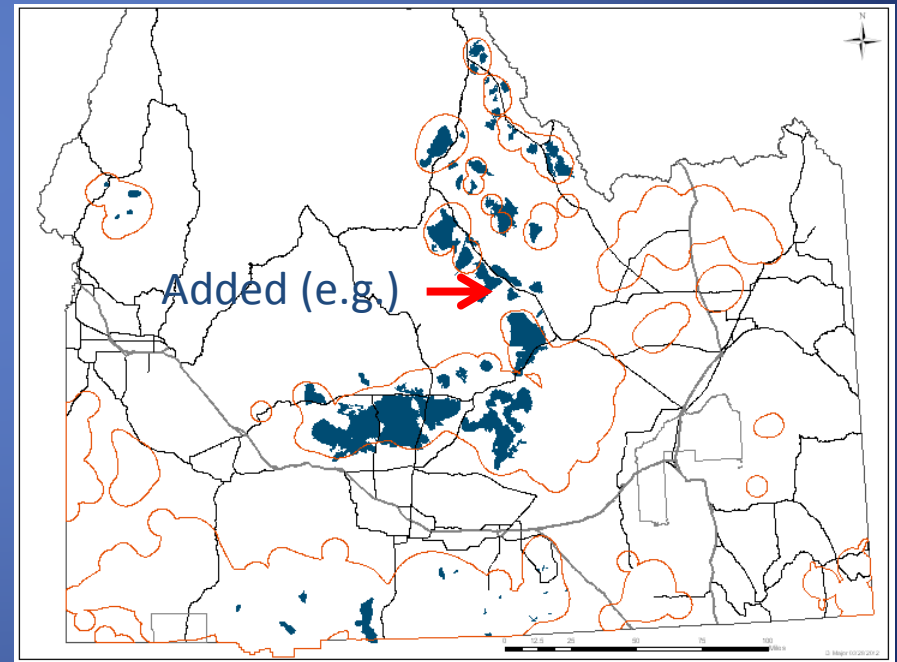
Provides connectivity between original PPH polygons.

Available Seasonal Habitat Information (IDFG)

Local Working Group info, IDFG draft seasonal habitat maps, telemetry data was used to identify important Winter and Breeding habitats. Most already encompassed by PPH.

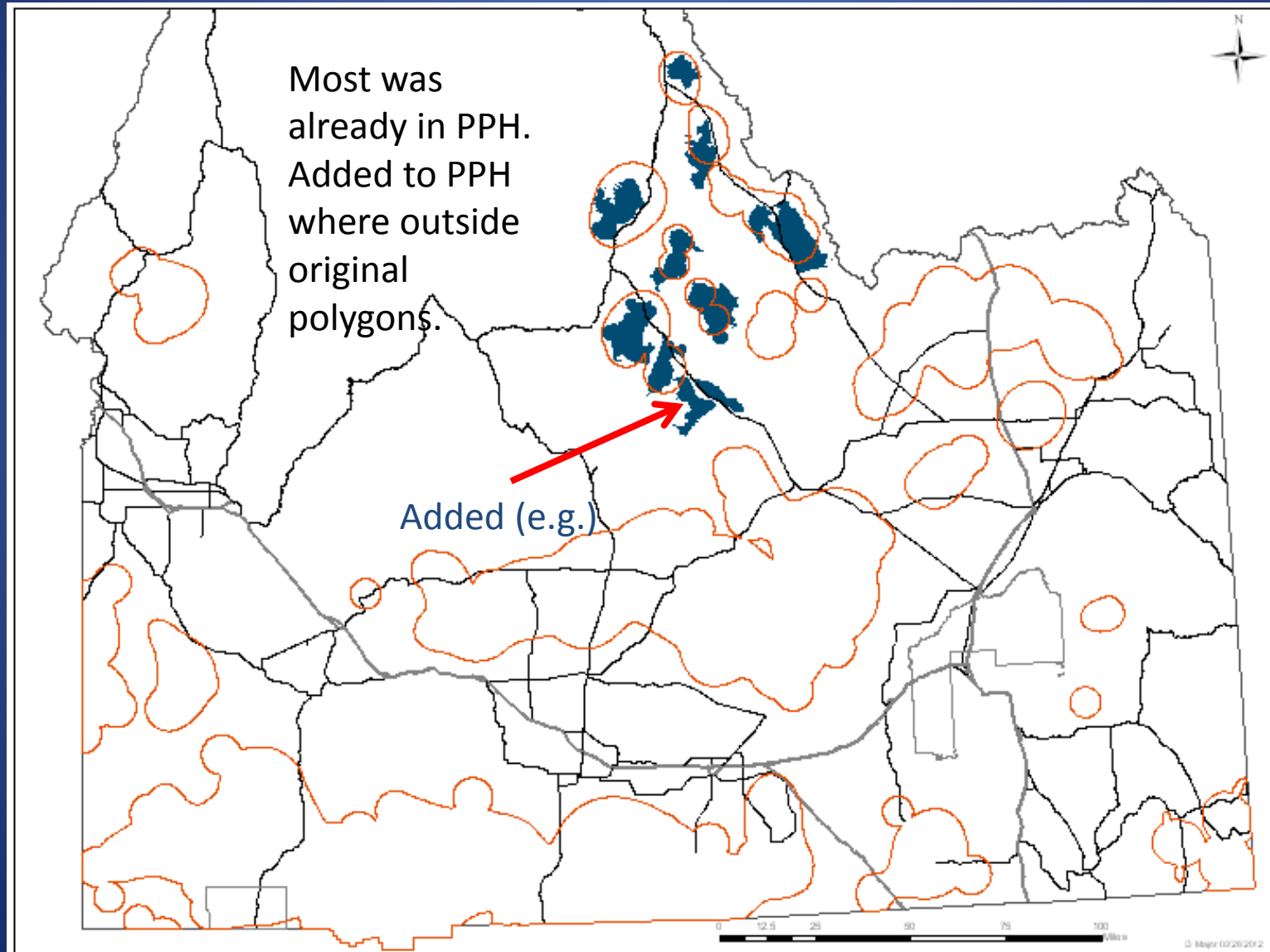


Winter Habitats



Breeding Habitats

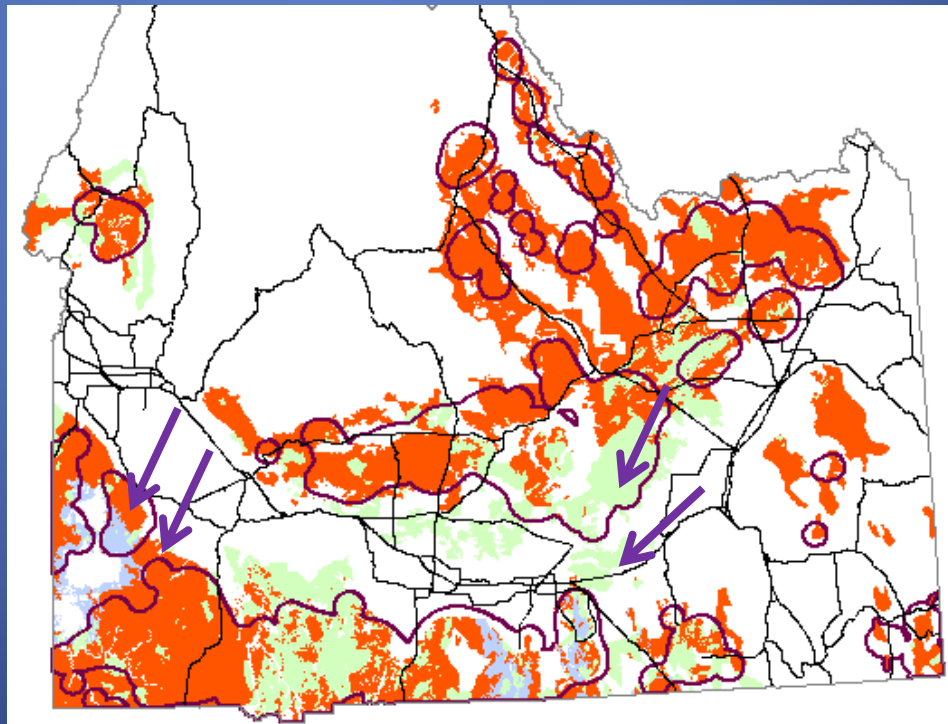
Challis Local Working Group Priority Areas



Habitat Connectivity and Restoration Areas

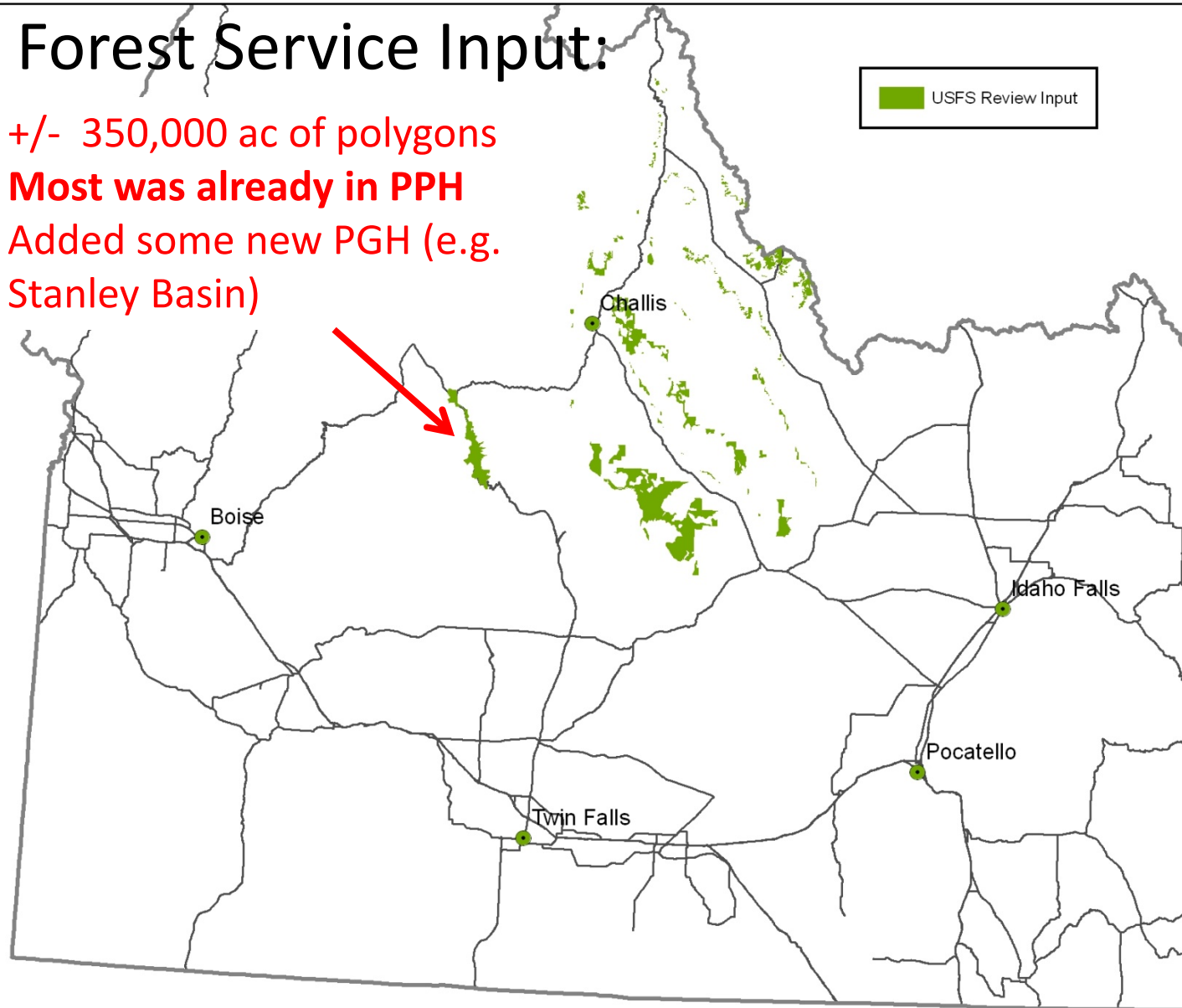
- Key habitat (sagebrush) inside PPH was used to represent sagebrush.
- Key habitat connecting original PPH polygons was added as PPH.
- Perennial Grass or Conifer encroachment *within* original PPH kept as PPH.
- Perennial Grass or conifer or sagebrush outside original PPH classified as PGH.

2011 “Key’ Habitat Map (data source)



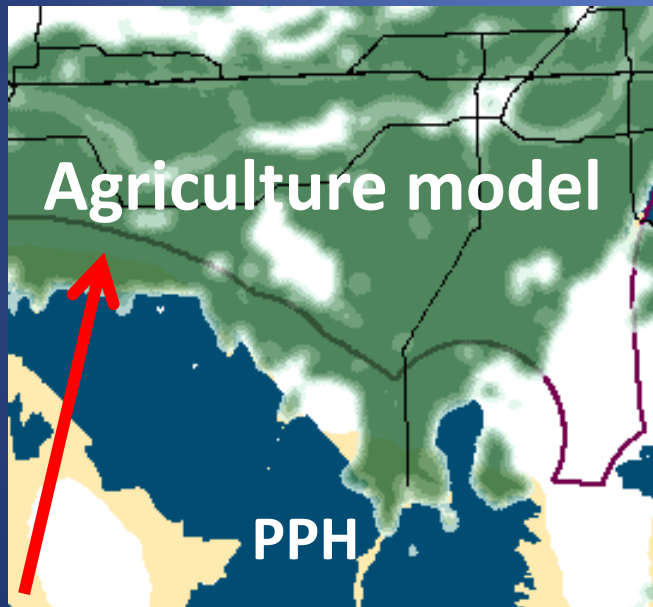
US Forest Service Input:

- +/- 350,000 ac of polygons
- **Most was already in PPH**
- Added some new PGH (e.g. Stanley Basin)



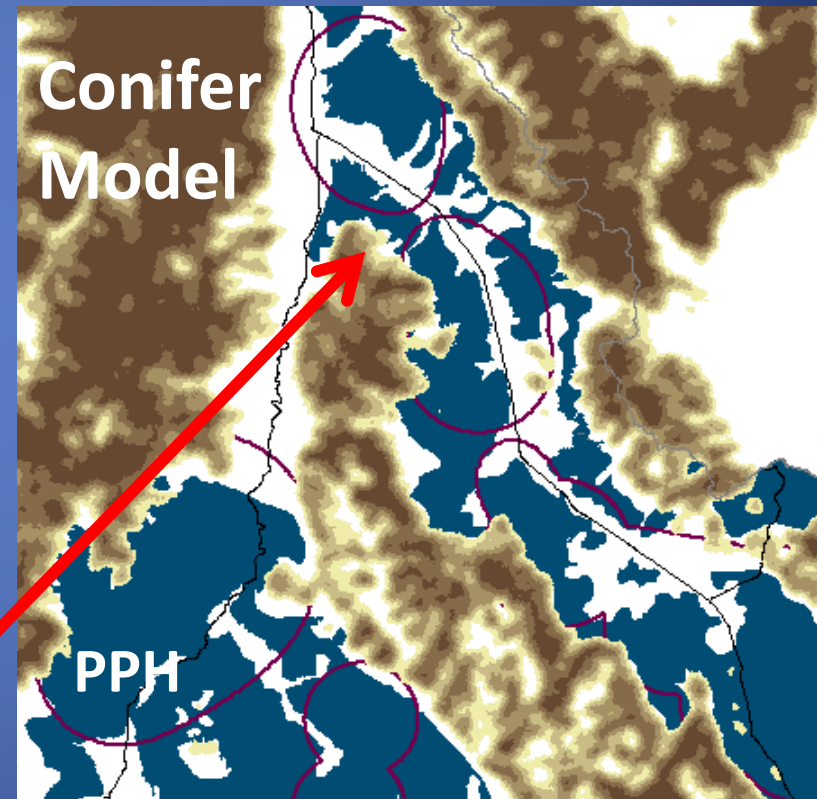
Agriculture and Conifer Filters:

Agricultural lands overlain
by PPH Twin Falls Co.



Agland and conifer removed
from PPH and PGH.

Conifer forest overlain
by PPH near Salmon



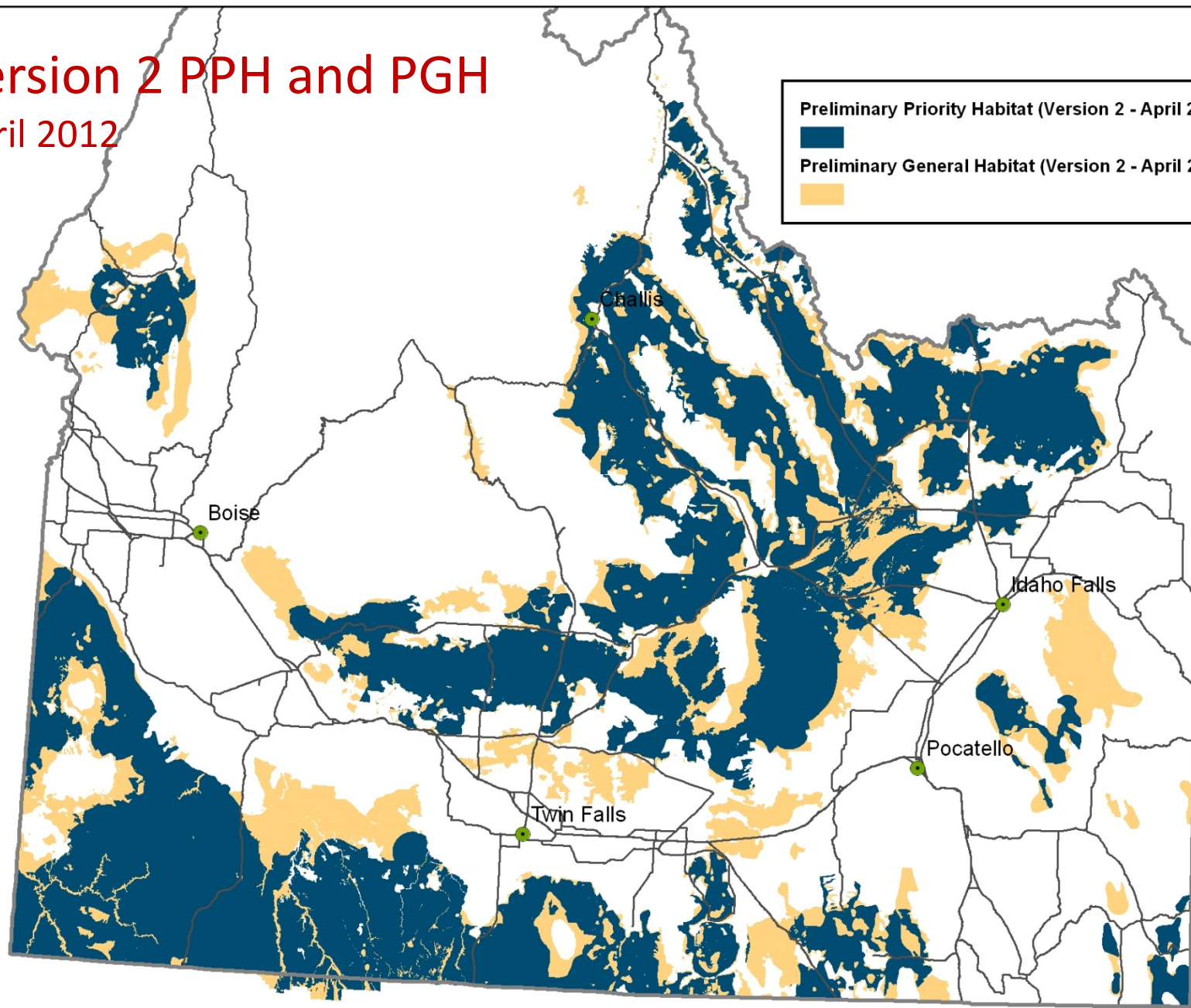
Current “Version 2” April 2012

PPH/PGH

- General PPH and PGH overview map
- PPH showing breakdown of priority:
 - Sagebrush
 - Perennial Grass
 - Conifer Encroachment
- Regional map with ID, NV, MT and OR PPH/PGH for context

Version 2 PPH and PGH

April 2012



Preliminary Priority Habitat (Version 2 - April 2012)



Preliminary General Habitat (Version 2 - April 2012)



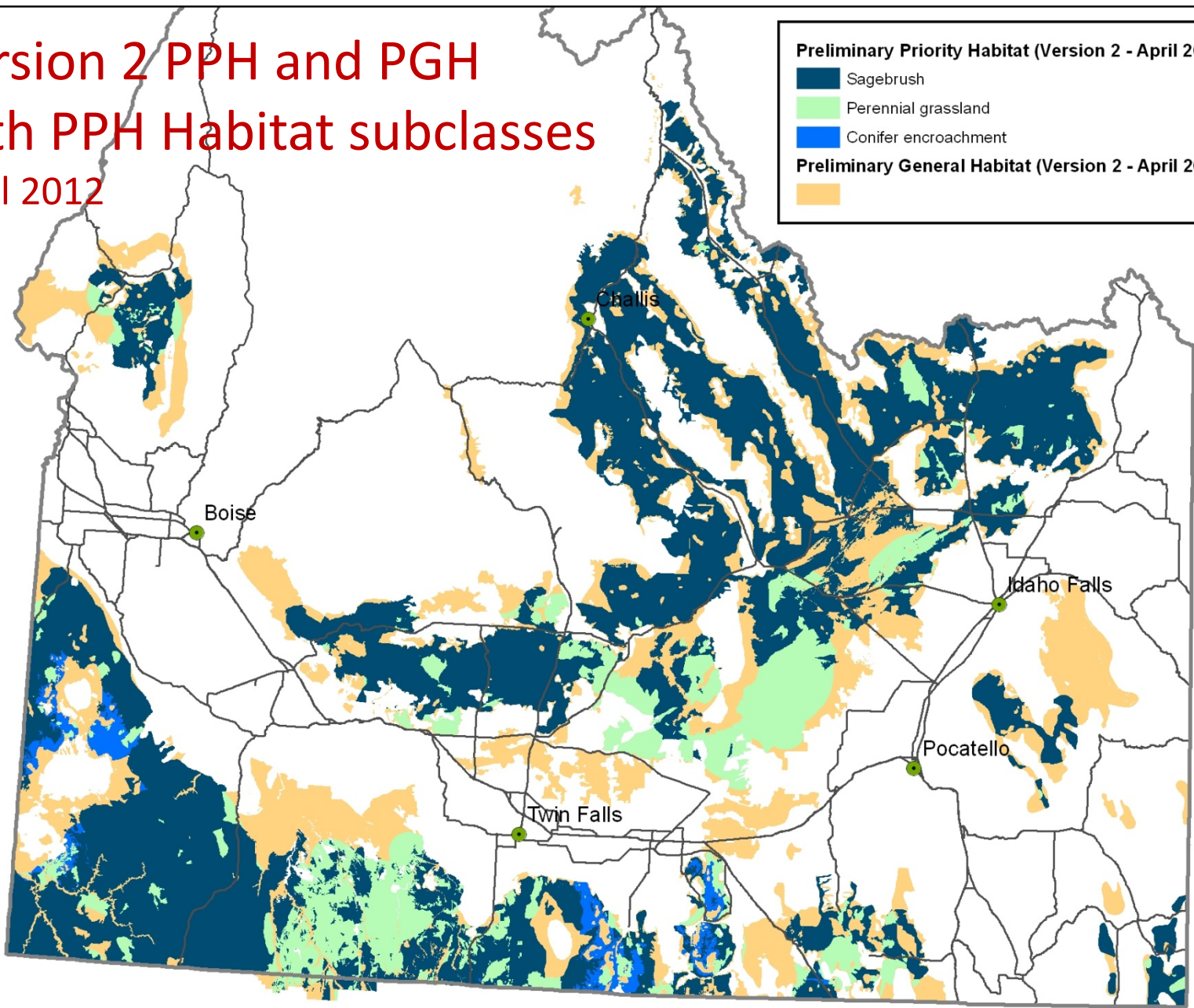
Version 2 PPH and PGH with PPH Habitat subclasses April 2012

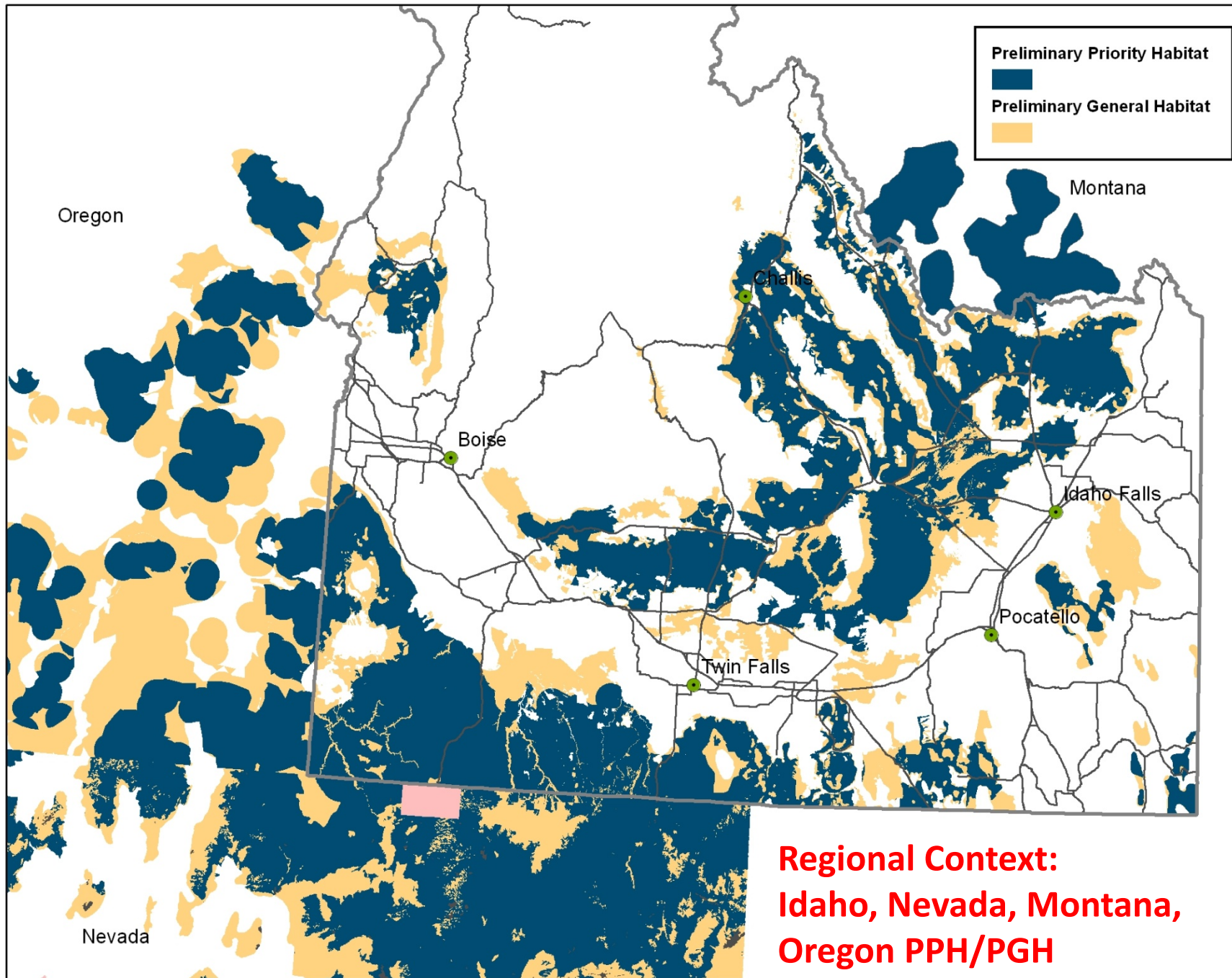
Preliminary Priority Habitat (Version 2 - April 2012)

- Sagebrush
- Perennial grassland
- Conifer encroachment

Preliminary General Habitat (Version 2 - April 2012)

-





**Regional Context:
Idaho, Nevada, Montana,
Oregon PPH/PGH**

Idaho PPH and PGH Acreage Summary

Version 2 (April 2012)

| Category | Idaho Total | Preliminary Priority Habitat | Preliminary Priority Habitat (BLM Admin) | Preliminary General Habitat | Preliminary General Habitat (BLM Admin) |
|--|---------------|------------------------------|--|--|---|
| Habitat Sagebrush | 9,311,962 ac | 8,159,000 (~88%) | 5,037,000 ac (~62%) | 1,222,000 ac (~13%) | 225,000 ac (~18%) |
| Sagebrush, Perennial grassland, Conifer encroachment | 13,460,181 ac | 10,690,000 ac (~80%) | 6,790,000 ac (~65%) | 4,554,000 ac (~34%) Includes acres from Persistence>25% | 1,758,000 ac (~39%) |
| Number of Leks (Idaho) | 848 leks | 776 leks (~92%) | 506 leks (~65%) | 52 leks (~6%) | 12 leks (~23%) |
| Male MaxCount (Idaho) | 20,204 males | 18,479 males (~91%) | 11,724 males (~63%) | 1,323 males (~7%) | 339 males (~26%) |

Idaho PPH and PGH Acreage Summary

All Ownerships

Version 2 April 2012

| Preliminary Priority Habitat | | |
|------------------------------|------------|------|
| BLM | 6,789,794 | 65% |
| BOR | 1,326 | <1% |
| DOE | 377,828 | 4% |
| HSTRCWTR | 1,340 | <1% |
| IR | 143,949 | 1.4% |
| LU_DOI | 56,507 | <1% |
| LU_USDA | 38,025 | <1% |
| MIL | 11,142 | <1% |
| NPS | 27,313 | <1% |
| NWR | 204 | <1% |
| OTHER | 60,637 | <1% |
| PRIVATE | 1,655,919 | 16% |
| STATE | 616,088 | 6% |
| STATEFG | 23,954 | <1% |
| STATEPR | 2,178 | <1% |
| USFS | 715,276 | 7% |
| Grand Total | 10,521,481 | |

| Preliminary General Habitat | | |
|-----------------------------|-----------|-----|
| BLM | 1,758,132 | 39% |
| BOR | 21,972 | |
| COE | 2,939 | |
| DOE | 182,455 | 4% |
| HSTRCWTR | 2,422 | |
| IR | 10,672 | |
| LU_DOI | 6,916 | |
| LU_USDA | 7,862 | |
| MIL | 37,714 | |
| NPS | 222,669 | 5% |
| NWR | 3,149 | |
| OTHER | 29,449 | |
| PRIVATE | 1,243,058 | 27% |
| STATE | 338,264 | 7% |
| STATEFG | 24,765 | |
| STATEOTH | 3 | |
| STATEPR | 5,149 | |
| USFS | 655,635 | 14% |
| Grand Total | 4,553,224 | |

A wide-angle landscape photograph showing a vast, flat field of low-lying, dry vegetation in the foreground. The field is covered with various types of shrubs and grasses, some appearing brown and others greenish-grey. In the background, a range of mountains stretches across the horizon, with several peaks covered in snow. The sky is a clear, bright blue with a few wispy clouds near the horizon. The word "Questions" is overlaid in the center of the image in a bold, yellow, sans-serif font.

Questions