

A Report on National Greater Sage-grouse Conservation Measures

**Tom Rinkes
BLM Idaho State Office**

Sage-grouse National Technical Team (NTT)

- Team was identified as part of BLM's National Sage-grouse Planning Strategy



NTT Charge & Purpose

- **Understand current scientific knowledge**
- **Provide specialized sources of expertise**
- **Provide innovative scientific perspectives concerning management approaches**
- **Provide assurance that relevant science is considered, reasonably interpreted, and accurately presented; and that uncertainties and risks are acknowledged and documented.**

NTT Charge & Purpose (cont.)

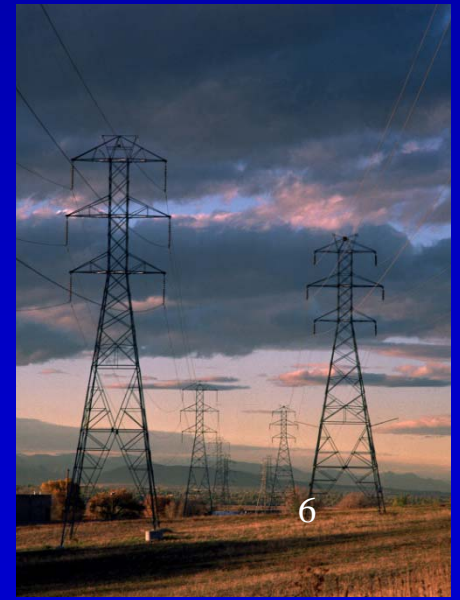
- **Provide science and technical assistance to the Regional Management Team (RMT) and Regional Interdisciplinary Team (RIDT).**
- **Articulate conservation objectives for the greater sage-grouse in measurable terms to guide overall planning.**

Goal

- **Maintain and/or increase sage-grouse abundance and distribution by conserving, enhancing or restoring the sagebrush ecosystem upon which populations depend in cooperation with other conservation partners.**
 - **sagebrush communities and landscapes (50-70% SB landscape cover for long-term persistence)**
 - **collaborative conservation efforts**

Objective

- The overall objective is to protect priority sage-grouse habitats from anthropogenic disturbances that will reduce distribution or abundance of sage-grouse.



Priority Habitats (Areas)

- **Priority sage-grouse habitats are areas that have the highest conservation value to maintaining or increasing sage-grouse populations.**
 - **Breeding, late brood-rearing, winter concentration areas, and where known, migration or connectivity corridors**
 - **Identified by state fish and wildlife agencies**
 - **Ensure activities immediately outside priority areas do not impact priority habitat**

Sub-Objectives

- **Designate priority sage-grouse habitats**
- **Maintain or increase current populations**
 - manage or restore priority areas, 70% SB cover
- **Quantifiable habitat and population objectives with WAFWA**
- **Manage priority areas for discrete disturbances so they are less than 3% of the area, regardless of ownership**

Disturbances

- **Discrete - having a distinct measureable impact in space and time**
 - Ex: roads, power lines, oil/gas wells, tall structures
- **Diffuse - pressure is exerted over broad spatial or temporal scales**
 - Ex: livestock grazing
 - Fire can be either discrete or diffuse – scale related

Two spatial extents for measuring anthropogenic disturbance

- **Large-scale disturbances that impact sage-grouse distribution and abundance at any level will not be permitted within priority areas**
- **Smaller scale proposed anthropogenic disturbances will not disturb more than a total of 3% of the acreage within each priority area**
 - **Concentrating or clustering disturbances**

Conservation Measures

- Designed to achieve population and habitat objectives
- Organized by resource programs



Conservation Measures

- **Travel and Transportation**
- **Recreation**
 - Special Recreation Permits (SRP)**
- **Lands/Realty**
 - Rights of Way**
 - Land Tenure Adjustment**
 - Proposed Land Withdrawals**



Conservation Measures

Range Management

- Implementing Management Actions after Land Health and Habitat Evaluations
- Riparian Areas and Wet Meadows
- Treatments to Increase Forage for Livestock/Wild Ungulates
- Structural Range Improvements and Livestock Management Tools
- Retirement of Grazing Privileges



Conservation Measures

- **Wild Horse and Burro Management**



Conservation Measures

- **Minerals**
 - **Fluid Minerals**
 - Unleased Federal Fluid Mineral Estate
 - Leased Federal Fluid Mineral Estate
 - **Solid Minerals**
 - Coal
 - Locatable Minerals
 - **Non-energy Leasable Minerals (e.g., sodium, potash)**
 - **Saleable Mineral Materials**
 - **Mineral Split Estate**



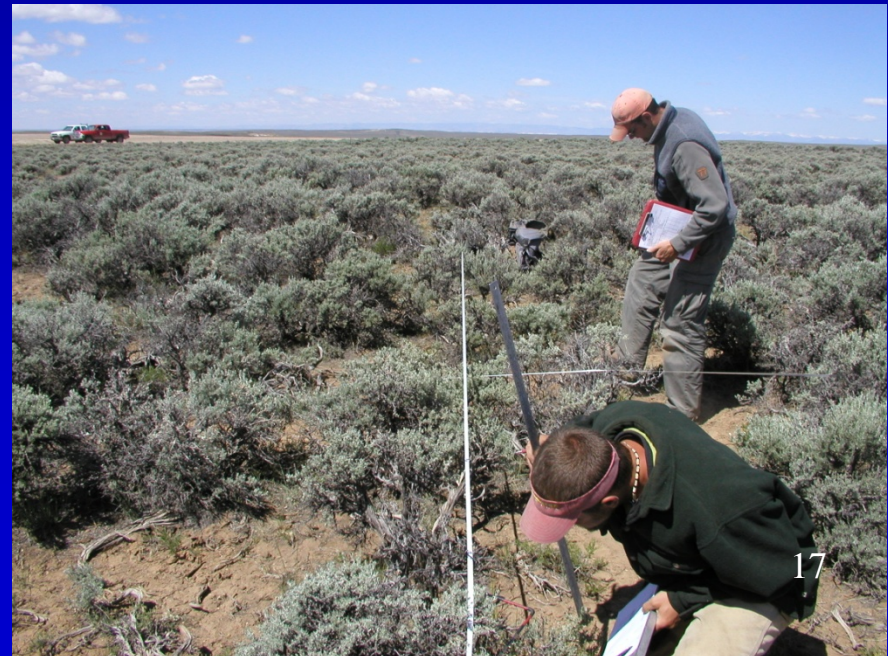
Conservation Measures

- **Wildfire Suppression, Fuels Management and Fire Rehabilitation**
 - Fuels Management
 - Fire operations
 - Emergency Stabilization and Rehabilitation (ES&R)



Conservation Measures

- Habitat Restoration
- Monitoring of Sage-grouse and Sagebrush Habitats



Appendices

- **Life History Requirements**
- **Scientific Inference**
- **BMPs WNV**
- **BMPs for Fluid Mineral Development**
- **BMPs for Locatable Mineral Development**
- **BMPs for Fire & Fuels (WO IM 2011-138)**
- **NTT Members**

Questions?

