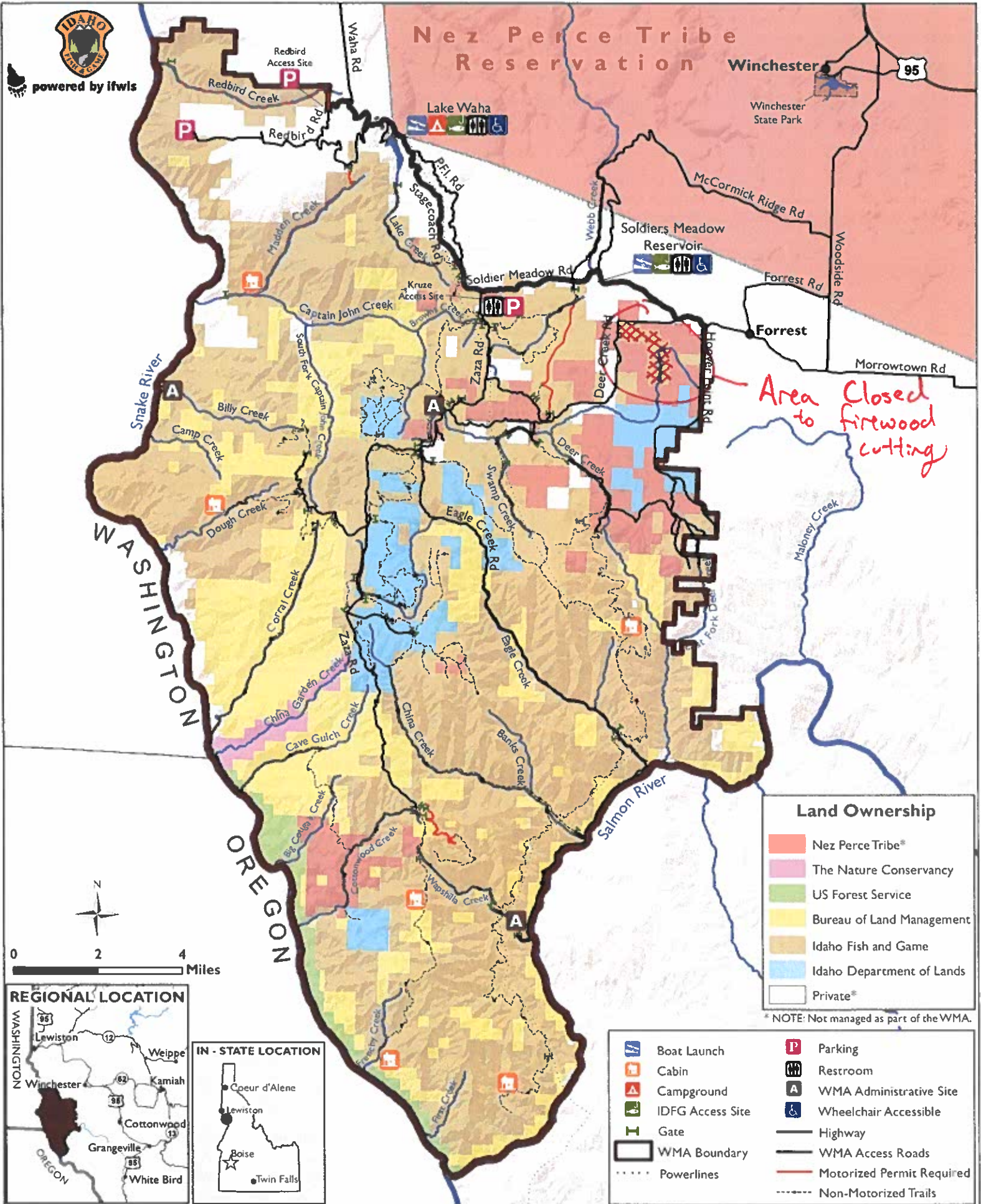


Craig Mountain Wildlife Management Area



powered by ifwis



Area to Closed firewood cutting

Land Ownership

- Nez Perce Tribe*
- The Nature Conservancy
- US Forest Service
- Bureau of Land Management
- Idaho Fish and Game
- Idaho Department of Lands
- Private*

* NOTE: Not managed as part of the WMA.

- | | | | |
|--|------------------|--|---------------------------|
| | Boat Launch | | Parking |
| | Cabin | | Restroom |
| | Campground | | WMA Administrative Site |
| | IDFG Access Site | | Wheelchair Accessible |
| | Gate | | Highway |
| | WMA Boundary | | WMA Access Roads |
| | Powerlines | | Motorized Permit Required |
| | | | Non-Motorized Trails |

