



Idaho Wild Turkey Hunter Opinion Survey



Prepared by **IDAHO DEPARTMENT OF FISH AND GAME**
January 2022

Recommended Citation:

Idaho Department of Fish and Game. 2022. Idaho wild turkey hunter opinion survey. Idaho Department of Fish and Game, Boise, USA.

Front Cover Photograph:

CC-BY Brett Bowersox

Additional copies:

Additional copies can be downloaded from the Idaho Department of Fish and Game website at idfg.idaho.gov



CCBY JOHN O'NEILL IDAHO FISH AND GAME



Executive Summary

2020 Sample and Survey

To better understand views of Idaho wild turkey hunters and inform management guidance for a statewide wild turkey management plan, the Department conducted an opinion survey of wild turkey tag buyers during June 2020 (Appendix A). The sampling frame for this opinion survey was comprised of individuals who purchased a wild turkey tag from 2016 to 2020, and for whom the Department had a valid email address. The sampling frame was defined as:

- Anyone (i.e., resident and nonresident) who purchased a wild turkey tag during 2016–2020;
- Anyone who was 18 or older at the time of license purchase; and
- Anyone who had provided an email address to the Department.

An email invitation to participate in the survey was sent to nearly 43,000 wild turkey tag buyers; this was followed by 2 reminder emails requesting participation. In total, 6,944 questionnaires were returned; the effective response rate for this effort was 16%. The margin of sampling error for the 2020 Wild Turkey Hunter Opinion Survey was $\pm 1.5\%$ (at a 99% confidence level). No non-response follow-up survey was conducted. We reviewed data from the 2020 wild turkey hunter opinion survey prior to analyses to remove inconsistent responses. For example, if respondents answered that they had not hunted during previous hunting seasons, we removed all responses on questions related

to their participation in hunting seasons. In addition, if respondents did not correctly answer ranking questions (e.g., used a rank multiple times) these answers were excluded from the analysis.

This report summarizes the results of the 2020 wild turkey hunter opinion survey.

Mean age of respondents who said they hunted was 49.2 years, and 93% were male. Nearly 88% of respondents hunted wild turkeys in Idaho within the last 5 years, and almost one-half of respondents hunted wild turkeys in Idaho < 5 years. Just under 7% of respondents reported membership in NWTf.

Respondents identified spring general seasons as the most preferred (72.4% listed as favorite) wild turkey hunting opportunity; 58% participated in spring 2020 seasons, whereas 54% participated in fall 2019 seasons. On average, hunters spent 5.24 days hunting wild turkeys during spring 2020 seasons and 5.02 days hunting during fall 2019 seasons. Most wild turkey hunters hunt in Southwest (32%), Clearwater (29%), and Panhandle (24%) regions. Although Clearwater Region hosts 29% of Idaho wild turkey hunters, only 19% reside there; 40% claim residence in Southwest Region and 21% in Panhandle Region.

When asked to rate overall quality of their spring wild turkey hunting experience, >70% of hunters reported good to excellent hunting. Sixty-three percent of spring wild turkey hunters primarily hunted on public land in Idaho. Nearly 33% primarily hunted private lands without a fee, and 1.8% primarily hunted Access Yes! properties.

Importance ratings of hunt-specific experiences suggested “access to public lands” and “hearing turkeys” were the two most important experiences for spring wild turkey hunters; “hiring a licensed guide” was least important. Other factors considered very important by hunters were to “see turkeys,” “not be interfered with by other hunters,” and “call turkeys in.”

When asked to rate overall quality of their fall wild turkey hunting experience, >70% of hunters reported good to excellent hunting. Nearly 52% of fall wild turkey hunters primarily hunted on public land in Idaho.

Just over 44% primarily hunted private lands without a fee, and 1.3% primarily hunted Access Yes! properties.

The two most important experiences for fall wild turkey hunters were “access to public lands” and “seeing turkeys”; “hiring a licensed guide” was least important. Hunters also placed importance on being able to “hear turkeys” and “not be interfered with by other hunters.”

When asked about importance of a variety of management activities, wild turkey hunters identified “providing spring hunting opportunities” and “providing youth hunting opportunities” as the two highest priorities on which the Department should focus. Improving habitat on public lands was also identified as a very important management activity. “Conducting classes on how to hunt wild turkey” was the least important management activity.





Table of Contents

Executive Summary	iv
Part 1 - Your Turkey Hunting Background	1
Part 2 - SPRING 2020 Turkey Hunting Season	7
Part 3 - FALL 2019 Turkey Hunting Season.....	17
Part 4 - Idaho Turkey Populations and Management	28
Part 5 - About You	35
Part 6 - About Surveys	40
Appendix A. 2020 Idaho Wild Turkey Hunter Opinion Survey.....	44



CCBY JOE FOSTER



Part 1 – Your Hunting Background

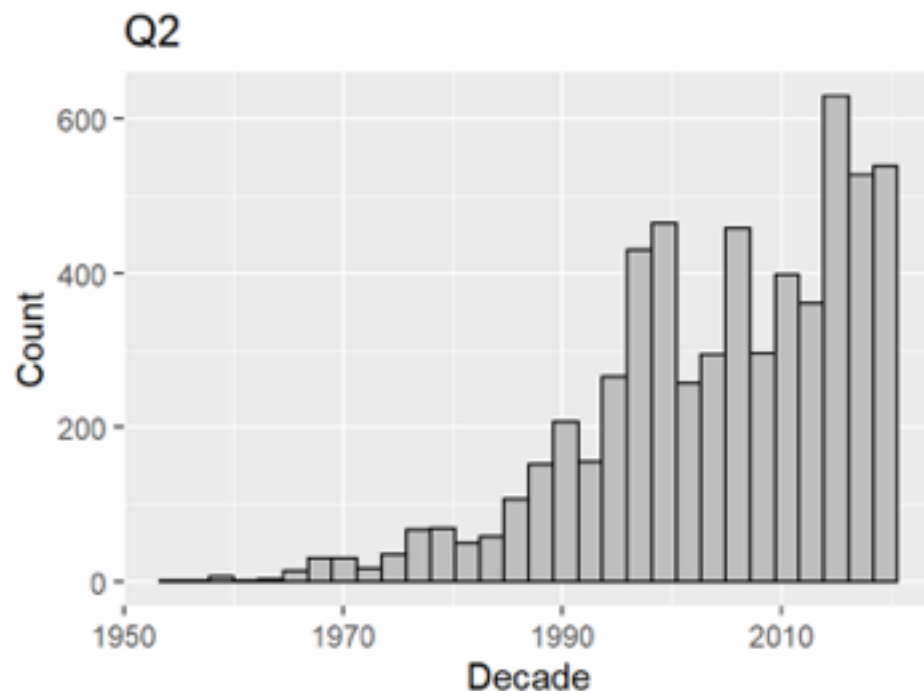
Question 1 - Have you ever hunted turkeys (not necessarily in Idaho)?

Eighty-seven percent of survey respondents reported hunting wild turkeys. Of those respondents who had hunted wild turkeys, 5,653 were Idaho residents and 412 were nonresidents; 94% reported hunting wild turkey in Idaho.

Response	Number	Total	Percentage	SE
No	879	6944	12.7	0.4
Yes	6065	6944	87.3	0.4

Question 2 - In what year did you first hunt turkeys, not necessarily in Idaho? If uncertain, please estimate.

Eighty-nine percent of survey respondents initiated their first turkey hunt within the last 3 decades.



Question 3 - Have you ever hunted turkeys in Idaho?

Ninety-four percent of respondents who said they had hunted wild turkeys had also hunted in Idaho.

Response	Number	Total	Percentage	SE
No	357	6065	5.9	0.3
Yes	5708	6065	94.1	0.3

Question 4 - How many years have you hunted turkeys in Idaho? If uncertain, please estimate.

Nearly one-half (47.7%) of respondents had hunted wild turkeys in Idaho fewer than 5 years.

Category	Number	Total	Percentage	SE
1-4 Years	2718	5703	47.7	0.7
5-9 Years	1073	5703	18.8	0.5
10-14 Years	677	5703	11.9	0.4
15-20 Years	492	5703	8.6	0.4
21 + Years	743	5703	13.0	0.4

Question 5 - Have you hunted turkeys in Idaho in the last 5 years?

Nearly 88% of respondents hunted wild turkeys in Idaho within the last 5 years.

Response	Number	Total	Percentage	SE
No	713	5708	12.5	0.4
Yes	4995	5708	87.5	0.4

Question 6 - In which of the last 5 years have you hunted turkey in Idaho? (Check all that apply.)

Over 54% of respondents had hunted turkeys in Idaho at least once of the last 5 years.

Year	Number	Total	Percentage	SE
2016	2691	4977	54.1	0.71
2017	2865	4977	57.6	0.70
2018	3120	4977	62.7	0.69
2019	3217	4977	64.6	0.68
2020	3004	4977	60.4	0.69

Question 7 - Why have you NOT hunted wild turkeys in Idaho in the last 5 years, what factors have most influenced your decision not to hunt? (Check all that apply.)

Respondents most frequently identified “Lack of time” as the factor that most influenced their decision not to hunt wild turkeys in Idaho in the last 5 years.

Reason	Number	Total	Percentage	SE
Lack of time	281	731	38.4	1.8
Other	197	731	26.9	1.64
Limited access - no place to hunt	180	731	24.6	1.59
Limited opportunity where you live	169	731	23.1	1.56
I don't hunt turkeys; tag in Sportsmen package	153	731	20.9	1.5
Too many other hunters	81	731	11.1	1.16
Lack of experience /knowledge/mentor	73	731	10	1.11
Lack of success	62	731	8.5	1.03
Complicated season structure	56	731	7.7	0.99
Cost of travel or hunting equipment	41	731	5.6	0.85

Overall, 197 (26.9%) survey respondents to Question 7 selected “Other” as the reason why they had not hunted wild turkeys over the last 5 years. Those respondents most frequently identified “didn’t draw a tag” or “dislike eating turkey” as the factor that most influenced their decision not to hunt wild turkeys.

Topic	Number
Didn’t draw tag	24
Dislike eating turkey	23
Lack of interest	20
Cost of tag	17
Just moved to Idaho	15
No longer able	13
Too busy	13
Lack of access (private land)	11
Lack of experience	10
Busy with other hunting	8
Low turkey numbers	7
Not challenging	7
Hunter congestion	6
Moved away	5
Take kids hunting	2
IDFG only cares about NR hunters	1
Too far to drive	1

Question 8 - In which type(s) of turkey hunting have you participated? (Check all that apply.)

Approximately 88% of respondents who had hunted turkeys in Idaho reported they participated in spring general seasons; 41% had participated in fall general seasons.

Hunt type	Number	Total	Percentage	SE
Spring general season	4386	4992	87.9	0.46
Fall general season	2051	4992	41.1	0.7
Spring controlled hunt season	681	4992	13.6	0.49
Fall controlled hunt season	249	4992	5.0	0.31
Depredation hunt	172	4992	3.4	0.26
Landowner permission hunt	146	4992	2.9	0.24

Question 9 - Which ONE type of turkey season do you prefer most?

Respondents identified spring general seasons as the most preferred (72.4% listed as favorite) wild turkey hunting opportunity.

Hunt type	Number	Total	Percentage	SE
Spring general season	3594	4966	72.4	0.6
Fall general season	728	4966	14.7	0.5
Spring controlled hunt season	435	4966	8.8	0.4
Fall controlled hunt season	71	4966	1.4	0.2
Landowner permission hunt	71	4966	1.4	0.2
Depredation hunt	67	4966	1.3	0.2



Part 2 – Spring 2020 Turkey Hunting Season

Question 10 - Did you hunt for turkey(s) during the SPRING 2020 turkey hunting seasons?

Approximately 58% of respondents who had hunted turkeys in Idaho participated in spring 2020 seasons.

Response	Number	Total	Percentage	SE
No	2097	4995	42.0	0.7
Yes	2898	4995	58.0	0.7

Question 11 - In which Region and unit did you hunt the MOST for turkey during the SPRING 2020 season?

Most survey respondents hunted turkeys in the Southwest (32%), Clearwater (29%), and Panhandle (24%) regions.

Region	Number	Total	Percentage	SE
Panhandle	626	2610	24.0	0.8
Clearwater	758	2610	29.0	0.9
Southwest	837	2610	32.1	0.9
Magic Valley	15	2610	0.6	0.1
Southeast	311	2610	11.9	0.6
Upper Snake	55	2610	2.1	0.3
Salmon	8	2610	0.3	0.1

Game Management Unit

Panhandle

GMU	Number	Total	Percentage	SE
2	165	2828	5.8	0.4
8A	164	2828	5.8	0.4
1	161	2828	5.7	0.4
3	140	2828	5	0.4
8	122	2828	4.3	0.4
5	90	2828	3.2	0.3
6	43	2828	1.5	0.2
4	41	2828	1.4	0.2
4A	6	2828	0.2	0.1
7	2	2828	0.1	0

Clearwater

GMU	Number	Total	Percentage	SE
10A	212	2828	7.5	0.5
11	86	2828	3	0.3
11A	69	2828	2.4	0.3
15	38	2828	1.3	0.2
16	27	2828	1	0.2
18	27	2828	1	0.2
14	23	2828	0.8	0.2
13	20	2828	0.7	0.2
12	8	2828	0.3	0.1
10	3	2828	0.1	0.1
16A	1	2828	0	0
17	1	2828	0	0
19	1	2828	0	0

Southwest

GMU	Number	Total	Percentage	SE
39	285	2828	10.1	0.6
32	191	2828	6.8	0.5
31	120	2828	4.2	0.4
32A	100	2828	3.5	0.3
22	87	2828	3.1	0.3
33	47	2828	1.7	0.2
38	44	2828	1.6	0.2
23	38	2828	1.3	0.2
24	11	2828	0.4	0.1

Magic Valley

GMU	Number	Total	Percentage	SE
54	14	2828	0.5	0.1

Southeast

GMU	Number	Total	Percentage	SE
71	102	2828	3.6	0.4
77	74	2828	2.6	0.3
73	50	2828	1.8	0.2
74	44	2828	1.6	0.2
75	37	2828	1.3	0.2
70	23	2828	0.8	0.2
78	22	2828	0.8	0.2
68A	5	2828	0.2	0.1

Upper Snake

GMU	Number	Total	Percentage	SE
63A	22	2828	0.8	0.2
67	15	2828	0.5	0.1
64	11	2828	0.4	0.1
69	5	2828	0.2	0.1
50	3	2828	0.1	0.1
60A	2	2828	0.1	0
63	2	2828	0.1	0
66	2	2828	0.1	0
60	1	2828	0	0
62	1	2828	0	0

Salmon

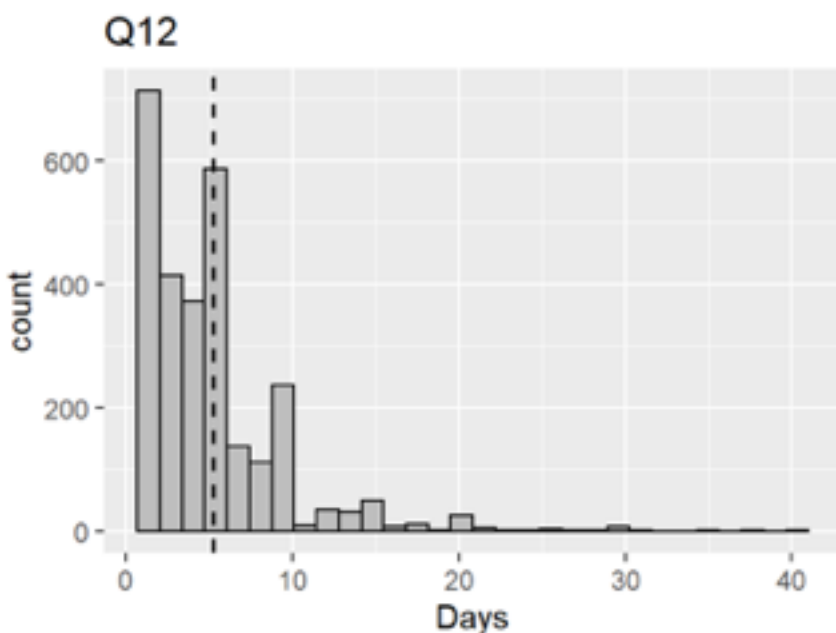
GMU	Number	Total	Percentage	SE
21A	2	2828	0.1	0
36A	2	2828	0.1	0
36B	2	2828	0.1	0
28	1	2828	0	0
30	1	2828	0	0
37	1	2828	0	0

Region Unknown

GMU	Number	Total	Percentage	SE
Unk	11	2828	0.4	0.1

Question 12 -How many days did you hunt for turkeys during the SPRING 2020 season?

On average, respondents who hunted turkeys during spring 2020 seasons spent 5.2 days hunting wild turkeys.



Average days = 5.2; standard deviation = 4.3

Question 13 - Did you harvest a turkey during the SPRING 2020 season?

Forty-three percent of respondents who hunted turkeys during spring 2020 seasons harvested a bird.

Response	Number	Total	Percentage	SE
No	1633	2864	57.0	0.9
Yes	1231	2864	43.0	0.9

Question 14 - What type(s) of land did you hunt during the SPRING 2020 turkey season in Idaho? (Please check ALL that apply.)

Survey respondents who hunted turkeys during spring 2020 seasons reported hunting on both public and private lands.

Land type	Number	Total	Percentage	SE
Public land	2264	2878	78.7	0.8
Private lands without a fee	1367	2878	47.5	0.9
Access Yes! Properties	219	2878	7.6	0.5
Private lands you lease or pay to hunt on	80	2878	2.8	0.3
I don't know	5	2878	0.2	0.1

Question 15 - Please select the ONE property type where you primarily hunted turkeys in Idaho during the SPRING 2020 season?

Sixty-three percent of survey respondents who hunted turkeys during spring 2020 seasons reported primarily hunting on public lands. Nearly 33% primarily hunted private lands without a fee.

Property type	Number	Total	Percentage	SE
Public land	1817	2883	63	0.9
Private lands without a fee	948	2883	32.9	0.9
Private lands you lease or pay to hunt on	58	2883	2	0.3
Access Yes! Properties	52	2883	1.8	0.2
I don't know	8	2883	0.3	0.1

Question 16 - How would you rate the overall quality of your wild turkey hunting experience during the SPRING 2020 season?

When asked to rate overall quality of their spring 2020 wild turkey hunting experience, >70% of survey respondents who hunted turkeys reported good to excellent hunting.

Response	Number	Total	Percentage	SE
Poor	279	2883	9.7	0.6
Fair	562	2883	19.5	0.7
Good	898	2883	31.1	0.9
Very Good	670	2883	23.2	0.8
Excellent	474	2883	16.4	0.7



CCBY DON JENKINS IDAHO FISH AND GAME

Question 17 - How IMPORTANT are the following experiences to your Idaho SPRING turkey hunting experience?

Survey respondents were asked to identify how important each of the below attributes were to their hunting experience (where 1 = not at all important and 5 = extremely important). Survey respondents identified “access to public lands” and “hearing turkeys” as the two most important attributes to their spring wild turkey hunting experience; “hiring a licensed guide” was least important. Other factors considered very important by survey respondents were “seeing turkeys,” “not being interfered with by other hunters,” and “calling turkeys in.”

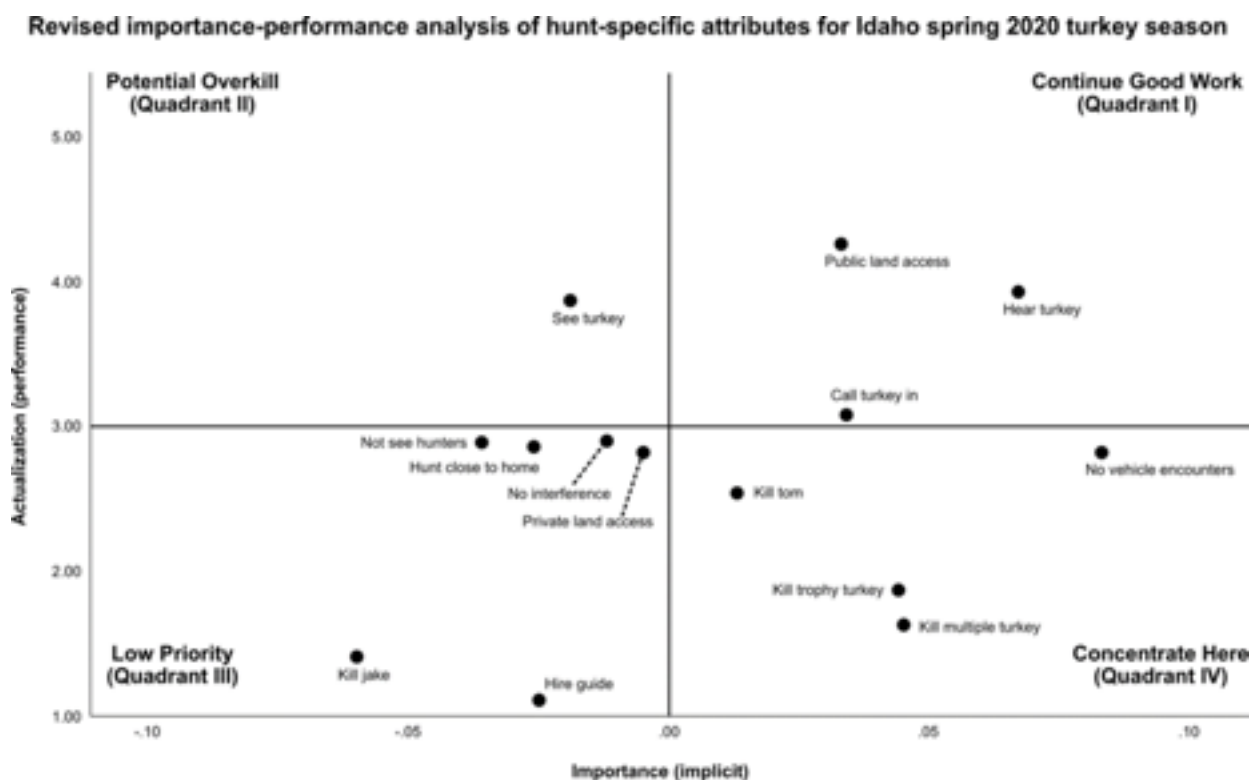
Attribute	Mean	SD	Rank
Access to public lands	4.57	0.83	1
Hearing turkeys	4.34	0.76	2
Seeing turkeys	4.24	0.79	3
Not being interfered with by other hunters	4.13	1.03	4
Calling turkeys in	4.02	0.95	5
Not encountering off-road vehicles	3.70	1.30	6
Not seeing other hunters	3.54	1.14	7
Killing a tom	3.48	1.10	8
Access to private lands	3.19	1.38	9
Hunting close to home or cabin	2.57	1.31	10
Killing a trophy turkey	2.47	1.24	11
Killing a jake	2.37	1.13	12
Killing multiple turkeys	2.26	1.23	13
Hunting with an outfitter/guide	1.15	0.58	14

Question 18 - To what extent did each actually HAPPEN during your SPRING 2020 Idaho turkey hunting season?

Survey respondents were asked to identify to what extent they experienced each of the below attributes during their hunt (where 1 = not at all and 5 = very much). Survey respondents identified “have access to public lands” and “hear turkeys” as the two most important attributes they actually experienced during the spring 2020 turkey hunting season; “hunt with and outfitter/guide” was least important. Other important attributes experienced by survey respondents were “see turkeys,” “not be interfered with by other hunters,” and “call turkeys in.” What hunters encountered during spring 2020 turkey hunting seasons aligned quite well with the attributes identified as important to their hunting experience in Question 17.

Attribute	Mean	SD	Rank
Have access to public lands	4.26	1.14	1
Hear turkeys	3.93	1.18	2
See turkeys	3.87	1.15	3
Call turkeys in	3.08	1.43	4
Not be interfered with by other hunters	2.90	1.51	5
Not see other hunters	2.89	1.39	6
Hunt close to home or cabin	2.86	1.49	7
Not encounter off-road vehicles	2.82	1.47	8
Have access to private lands	2.82	1.66	9
Kill a tom	2.54	1.83	10
Kill a trophy turkey	1.87	1.43	11
Kill multiple turkeys	1.63	1.34	12
Kill a jake	1.41	1.09	13
Hunt with an outfitter/guide	1.11	0.57	14

Implicit importance is partial correlation between satisfaction and natural logarithm for performance on experience, controlling for natural log of other experiences. Performance is actualization of experiences during the spring 2020 turkey season based on response to the question “did it happen?” with responses ranging from 1 (not at all) to 5 (very much). Four experiences fell in the “concentrate here” quadrant: “no vehicle encounters,” kill multiple turkeys,” “kill trophy turkey,” and “kill tom.”



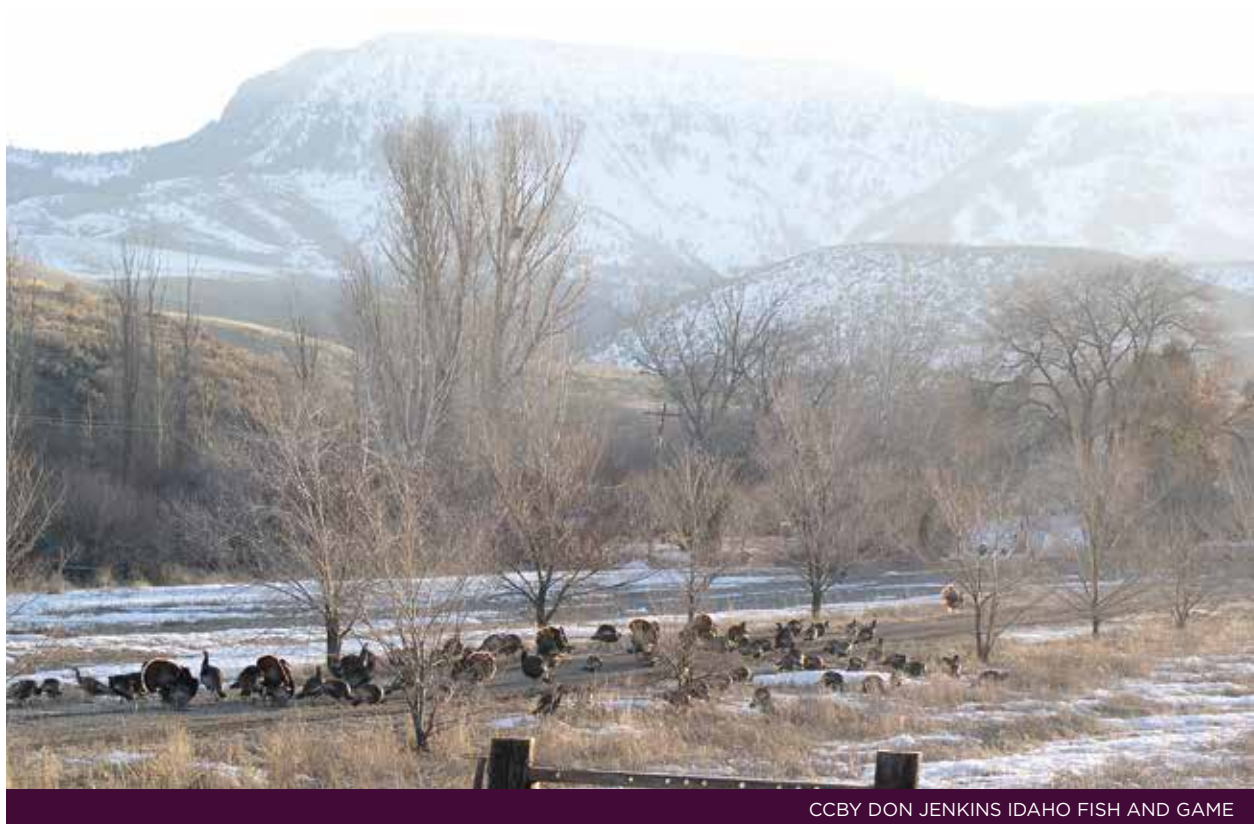


Part 3 – Fall 2019 Turkey Hunting Season

Question 19 - Did you hunt for turkeys during the FALL hunting seasons?

Approximately 42% of respondents who had hunted turkeys in Idaho participated in fall hunting seasons.

Response	Number	Total	Percentage	SE
No	2884	4995	57.7	0.7
Yes	2111	4995	42.3	0.7



CCBY DON JENKINS IDAHO FISH AND GAME

Question 20 - What factors have most influenced your decision NOT to participate in hunting turkeys during the fall? (Check all that apply)

Respondents most frequently identified “Busy with other hunting in the fall” as the factor that most influenced their decision not to hunt wild turkeys during fall.

Factor	Number	Total	Percentage	SE
Busy with other hunting in the fall	2097	2884	72.7	0.8
Lack of time	649	2884	22.5	0.8
Limited opportunity where you live	527	2884	18.3	0.7
Limited access - no place to hunt	412	2884	14.3	0.7
Other	391	2884	13.6	0.6
Do not enjoy fall turkey hunting	348	2884	12.1	0.6
Too many other hunters	186	2884	6.4	0.5
Cost of tags and/or license	125	2884	4.3	0.4
Cost of travel or hunting equipment	111	2884	3.8	0.4
I don't hunt turkeys; tag in Sportsmen package	54	2884	1.9	0.3

Overall, 391 (13.6%) survey respondents selected “Other” as the reason why they had not hunted wild turkeys during fall seasons. Those respondents most frequently identified “busy with other hunting” as the factor that most influenced their decision not to hunt wild turkeys.

Topic	Number
Busy with other hunting	59
Prefer spring turkey hunting	45
No season where I live/hunt	42
Lack of access (private land)	27
Lack of experience	25
Didn't draw a tag	22
Do not support fall turkey hunting	22
Already filled tag(s)	18
Too busy	16
Too far to travel	14
Hunter congestion	13
Lack of interest	12
Cost of tag	8
Dislike eating turkeys	8
Cannot use rifle	7
COVID-19	4
Do not like turkeys	4
No longer able	4
Just moved to Idaho	3
ATVs/UTVs - too many	2
Complicated season	2
Low turkey numbers	2
No turkeys where I live	2
Lack of birds	1
Student	1

Question 21 - Did you hunt for turkeys during the FALL 2019 turkey hunting season?

Approximately 54% of respondents who had hunted turkeys in Idaho participated in fall 2019 seasons.

Response	Number	Total	Percentage	SE
No	969	2111	45.9	1.1
Yes	1142	2111	54.1	1.1

Question 22 - In which Region and Unit did you hunt the most often for turkeys during the FALL 2019 season?

Most survey respondents hunted turkeys in the Panhandle (47%) and Clearwater (34%) regions.

Region	Number	Total	Percentage	SE
Panhandle	485	1040	46.6	1.5
Clearwater	352	1040	33.8	1.5
Southwest	79	1040	7.6	0.8
Southeast	116	1040	11.2	1.0
Upper Snake	1	1040	0.1	0.1
Salmon	7	1040	0.7	0.3

Game Management Unit

Panhandle

GMU	Number	Total	Percentage	SE
1	181	1110	16.3	1.1
2	102	1110	9.2	0.9
3	87	1110	7.8	0.8
5	51	1110	4.6	0.6
4	33	1110	3	0.5
6	33	1110	3	0.5
4A	8	1110	0.7	0.3

Clearwater

GMU	Number	Total	Percentage	SE
10A	107	1110	9.6	0.9
8A	83	1110	7.5	0.8
8	53	1110	4.8	0.6
11	29	1110	2.6	0.5
11A	29	1110	2.6	0.5
15	21	1110	1.9	0.4
18	20	1110	1.8	0.4
16	13	1110	1.2	0.3
14	8	1110	0.7	0.3
13	7	1110	0.6	0.2
10	1	1110	0.1	0.1
12	1	1110	0.1	0.1
16A	1	1110	0.1	0.1
20	1	1110	0.1	0.1

Southwest

GMU	Number	Total	Percentage	SE
22	20	1110	1.8	0.4
32	18	1110	1.6	0.4
32A	18	1110	1.6	0.4
38	18	1110	1.6	0.4
31	16	1110	1.4	0.4
21	1	1110	0.1	0.1

Southeast

GMU	Number	Total	Percentage	SE
71	39	1110	3.5	0.6
77	29	1110	2.6	0.5
74	26	1110	2.3	0.5
73	20	1110	1.8	0.4
75	14	1110	1.3	0.3
78	8	1110	0.7	0.3

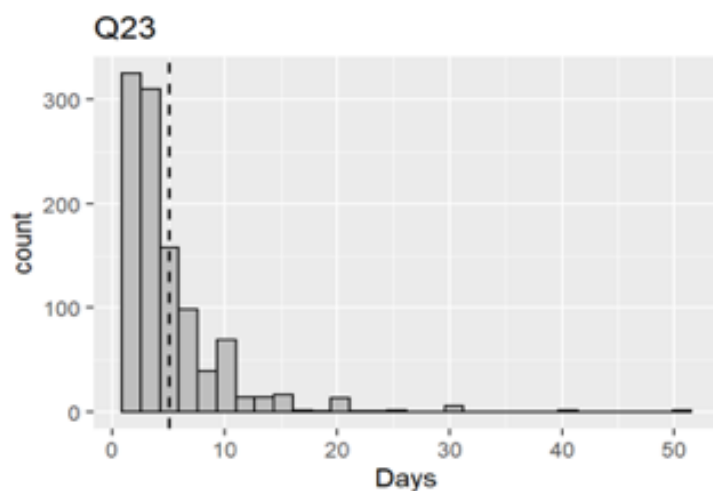
Region Unknown

GMU	Number	Total	Percentage	SE
Unk	8	1110	0.7	0.3

Question 23 - How many days did you hunt for turkeys during the FALL 2019 season?

On average, respondents who hunted turkeys during fall 2019 seasons spent 5.0 days hunting wild turkeys.

Average days = 5.0; standard deviation = 4.3



Question 24 - Did you harvest a turkey during the FALL 2019 season?

Forty-three percent of respondents who hunted turkeys during fall 2019 seasons harvested a bird.

Response	Number	Total	Percentage	SE
No	634	1119	56.7	1.5
Yes	485	1119	43.3	1.5

Question 25 - What type(s) of land did you hunt during the FALL 2019 turkey season in Idaho? (Please check ALL that apply.)

Survey respondents who had hunted turkeys during fall 2019 seasons reported hunting on both public and private lands.

Land type	Number	Total	Percentage	SE
Public land	764	1132	67.5	1.4
Private lands without a fee	657	1132	58.0	1.5
Access Yes! Properties	70	1132	6.2	0.7
Private lands you lease or pay to hunt on	31	1132	2.7	0.5
I don't know	3	1132	0.3	0.2

Question 26 - Please select the ONE property type where you primarily hunted turkeys in Idaho during the FALL 2019 season?

Approximately 52% of survey respondents who hunted turkeys during fall 2019 seasons reported primarily hunting on public lands. About 44% primarily hunted private lands without a fee.

Property type	Number	Total	Percentage	SE
Public land	589	1136	51.8	1.5
Private lands without a fee	501	1136	44.1	1.5
Private lands you lease or pay to hunt on	27	1136	2.4	0.5
Access Yes! Properties	15	1136	1.3	0.3
I don't know	4	1136	0.4	0.2

Question 27 - How would you rate the overall quality of your wild turkey hunting experience during the FALL 2019 season?

When asked to rate overall quality of their fall 2019 wild turkey hunting experience, 72% of survey respondents who hunted turkeys reported good to excellent hunting.

Response	Number	Total	Percentage	SE
Poor	103	1136	9.1	0.9
Fair	216	1136	19.0	1.2
Good	413	1136	36.4	1.4
Very Good	234	1136	20.6	1.2
Excellent	170	1136	15.0	1.1

Question 28 - How IMPORTANT are the following experiences to your Idaho FALL turkey hunting experience?

Survey respondents were asked to identify how important each of the below attributes were to their hunting experience (where 1 = not at all important and 5 = extremely important). Survey respondents identified “access to public lands” and “seeing turkeys” as the two most important attributes to their fall wild turkey hunting experience; “hiring a licensed guide” was least important. Other factors considered very important by survey respondents were “not being interfered with by other hunters,” “hearing turkeys,” and “access to private lands.”

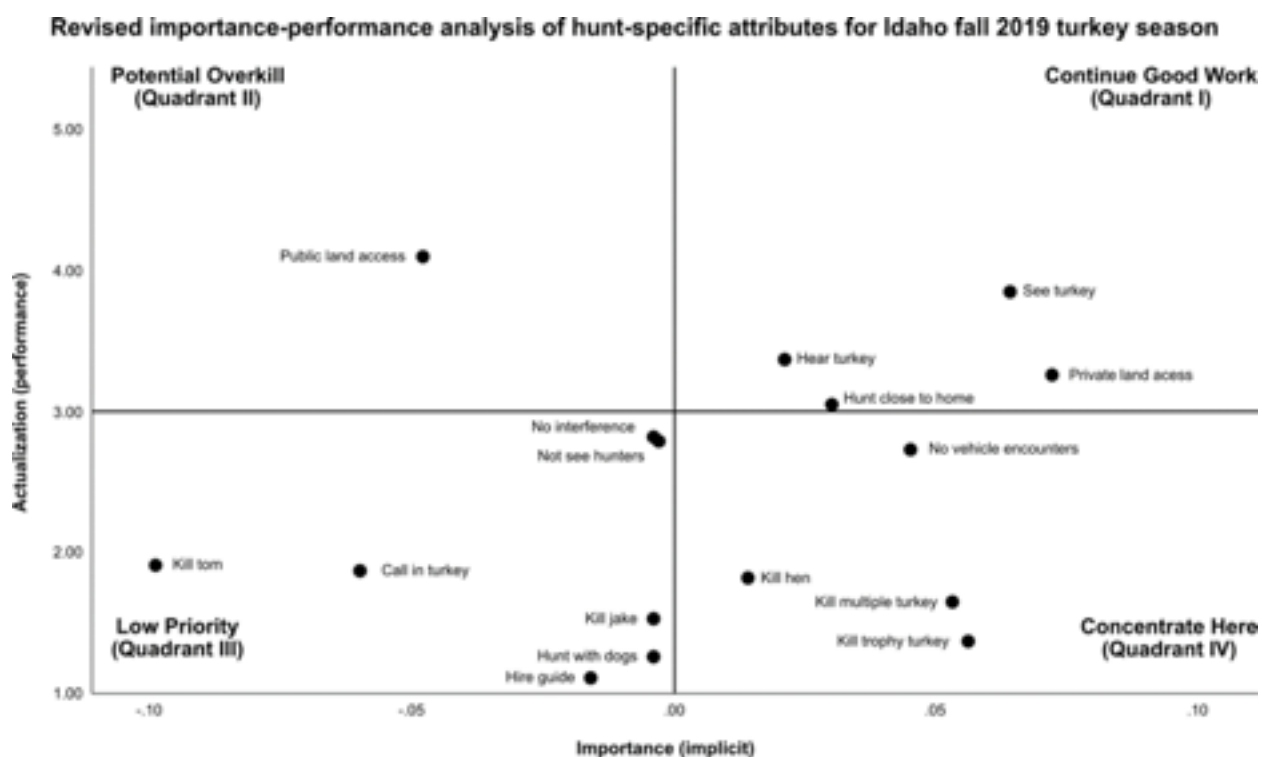
Attribute	Mean	SD	Rank
Access to public lands	4.38	1.02	1
Seeing turkeys	4.18	0.85	2
Not being interfered with	3.89	1.20	3
Hearing turkeys	3.63	1.13	4
Access to private lands	3.44	1.39	5
Not encountering off-road vehicles	3.43	1.44	6
Not seeing other hunters	3.38	1.30	7
Hunting close to home/cabin	2.93	1.42	8
Killing a tom	2.83	1.28	9
Calling turkeys in	2.79	1.33	10
Killing multiple turkeys	2.34	1.36	11
Killing a jake	2.24	1.15	12
Killing a hen	2.15	1.19	13
Killing a trophy	2.10	1.25	14
Hunting with a dog	1.42	1.00	15
Hiring a guide	1.14	0.6	16

Question 29 - To what extent did each actually HAPPEN during your FALL 2019 Idaho turkey hunting season?

Survey respondents were asked to identify to what extent they experienced each of the below attributes during their hunt (where 1 = not at all and 5 = very much). Survey respondents identified “have access to public lands” and “see turkeys” as the two most important attributes they actually experienced during the fall 2019 turkey hunting season; “hunt with an outfitter/guide” was least important. Other important attributes experienced by survey respondents were “hear turkeys,” “have access to private lands,” and “hunt close to home/cabin.” What hunters encountered during fall 2019 turkey hunting seasons aligned quite well with the attributes they identified as important to their hunting experience in Question 28; however, it appears “hunt close to home” was more important to fall turkey hunters than spring turkey hunters.

Attribute	Mean	SD	Rank
Access to public lands	4.10	1.27	1
See turkeys	3.85	1.12	2
Hear turkeys	3.37	1.32	3
Access to private lands	3.26	1.60	4
Hunting close to home/cabin	3.05	1.54	5
Not being interfered with	2.82	1.54	6
Not seeing other hunters	2.79	1.43	7
Not encountering off-road vehicles	2.73	1.49	8
Killing a tom	1.91	1.49	9
Calling turkeys in	1.87	1.21	10
Killing a hen	1.82	1.44	11
Killing multiple turkeys	1.65	1.31	12
Killing a jake	1.53	1.16	13
Killing a trophy	1.37	1.00	14
Hunting with a dog	1.26	0.87	15
Hiring a guide	1.11	0.56	16

Implicit importance is partial correlation between satisfaction and natural logarithm for performance on experience, controlling for natural log of other experiences. Performance is actualization of experiences during the fall 2019 turkey season based on response to the question “did it happen?” with responses ranging from 1 (not at all) to 5 (very much). Four experiences fell in the “concentrate here” quadrant: “no vehicle encounters,” kill multiple turkeys,” “kill trophy turkey,” and “kill hen.”





Part 4 – Idaho Turkey Populations and Management

Question 30 - Over the past 5 years, what trend have you seen in the number of the turkeys in the areas you most often hunt for turkey? (Please check one.)

Nearly 80% of survey respondents reported stable to increasing trends in the number of turkeys in the area they most often hunt turkeys.

Trend	Number	Total	Percentage	SE
A lot fewer	286	4939	5.8	0.3
Fewer	768	4939	15.5	0.5
About the same number	2238	4939	45.3	0.7
More	1165	4939	23.6	0.6
A lot more	482	4939	9.8	0.4

Question 31 - In thinking about the areas you most often hunt for turkey, would you say the turkey population is....(Please check one.)

Approximately 56% of survey respondents reported the turkey population in the area they most often hunt was “about right.” About 27% reported the population was “too low.”

Response	Number	Total	Percentage	SE
Way too low	206	4947	4.2	0.3
Too low	1342	4947	27.1	0.6
About right	2756	4947	55.7	0.7
Too high	442	4947	8.9	0.4
Way too high	201	4947	4.1	0.3

Question 32 - In thinking about the areas you hunt for turkey, at what level do you think the turkey population should be managed? (Please check one.)

Respondents most frequently reported the level at which the turkey population in the area they most often hunt was “no change – population is at a good level.” This was followed by “increase population 25%” and “increase population 10%.”

Level	Number	Total	Percentage	SE
Decrease Population 50% or more (Significant)	173	4941	3.5	0.3
Decrease Population 25% (Moderate)	337	4941	6.8	0.4
Decrease Population 10% (Slight)	270	4941	5.5	0.3
No change - Population is at a good level	1857	4941	37.6	0.7
Increase Population 10% (Slight)	899	4941	18.2	0.5
Increase Population 25% (Moderate)	966	4941	19.6	0.6
Increase Population 50% or more (Significant)	439	4941	8.9	0.4

Question 33 - If there were more turkeys available to hunt close to where you live, how likely is it that you would hunt them? (Please check one.)

Over 76% of respondents reported they would hunt turkeys if there were more turkeys available close to where they live.

Response	Number	Total	Percentage	SE
Very Unlikely	326	4960	6.6	0.4
Unlikely	114	4960	2.3	0.2
Neutral	720	4960	14.5	0.5
Likely	1166	4960	23.5	0.6
Very Likely	2634	4960	53.1	0.7

Question 34 - If a winter turkey hunting season was available (December-March), how likely is it that you would participate? (Please check one.)

Over 62% of respondents reported they would participate in a winter (December-March) turkey hunting season if the opportunity were available.

Response	Number	Total	Percentage	SE
Very Unlikely	634	4970	12.8	0.5
Unlikely	527	4970	10.6	0.4
Neutral	716	4970	14.4	0.5
Likely	1488	4970	29.9	0.6
Very Likely	1605	4970	32.3	0.7

Question 35 - Would you support a winter turkey hunting season if it allowed harvest of the following?

Survey respondents were most supportive of winter turkey seasons that allowed harvest of either “bearded turkeys” or “any turkey;” however, mean responses were close to neutral (3.0) for each option, which may suggest turkey hunters are indifferent to the type of turkey taken during winter hunting opportunities.

Response	Mean	SD
Only bearded turkeys	3.24	1.50
Only beardless turkeys	2.90	1.46
Any turkey	3.20	1.59

Question 36 - In general, turkey nuisance complaints occur in the fall and winter when turkeys are concentrated on wintering grounds. In areas where this occurs, what solutions do you support to reduce the overabundance of turkeys? (Check all that apply)

Over 50% of survey respondents supported “winter hunting seasons,” “trap and move turkeys to other areas of Idaho,” and “allow either sex hunting in the fall/winter” as solutions to turkey nuisance complaints on wintering grounds. “Trap and move turkeys to another state” was the least supported solution.

Solution	Number	Total	Percentage	SE
Add winter hunting season	3045	4935	61.7	0.7
Trap and move turkeys to other areas of Idaho with lower number of turkeys	2562	4935	51.9	0.7
Allow either sex hunting in the fall/winter	2551	4935	51.7	0.7
Kill permits/depredation hunts	2335	4935	47.3	0.7
Expand fall youth hunt opportunities	2166	4935	43.9	0.7
Supplemental feeding to disperse turkeys and reduce property damage	827	4935	16.8	0.5
Killing turkeys and donating to a food bank	657	4935	13.3	0.5
Other	530	4935	10.7	
Allow harvest of only bearded turkeys in the fall	452	4935	9.2	0.4
Allow harvest of only beardless turkeys in the fall	372	4935	7.5	0.4
Trap and move turkeys to another state	333	4935	6.7	0.4

Overall, 530 survey respondents selected “Other” when asked which solutions they would support to reduce the overabundance of turkeys. Those respondents most frequently identified “access to private lands” as a solution they would support to reduce overabundant turkeys.

Topic	Number
Access to private lands	115
Increase number of tags available	48
Nothing	44
Eliminate tags/daily bag limit/punch card	30
Reduce tag prices	30
Remove weapon restrictions	27
Trap and transplant	26
Mentored/Youth hunts	17
Discontinue feeding	16
Offer general season	15
Fall and winter tags	14
Depredation permits	12
Start spring seasons earlier	12
Feed turkeys	9
Manage based on science, not hunter opinion	6
Improve winter habitat	5
Private land winter hunts	5

Question 37 - Please rate the LEVEL OF IMPORTANCE you believe IDFG SHOULD PLACE on each of the following activities:

Survey respondents were asked to rate the level of importance they believed IDFG should place on the attributes they experienced during their hunt (where 1 = not at all important and 5 = extremely important). Survey respondents identified “spring hunting” and “youth hunting” as the two most important activities on which the Department should focus; “conducting classes” was least important.

Activity	Mean	SD	Rank
Providing spring hunting opportunities	4.25	0.86	1
Providing youth hunting opportunities	4.12	0.99	2
Improving/enhancing habitat on public lands	3.95	1.15	3
Providing wild turkey hunting information	3.54	1.12	4
Simplifying turkey hunting regulations	3.24	1.26	5
Improving/enhancing habitat on private lands	2.84	1.34	6
Conducting classes on how to hunt wild turkey	2.49	1.21	7

Question 38 - How satisfied are you with the following?

Survey respondents were asked to rate their level of satisfaction with the below topics (where 1 = very unsatisfied and 5 = very satisfied). Survey respondents were most satisfied with the “general spring turkey season” and least satisfied with the “number of hunters;” however, mean responses for each attribute were above neutral (3.0), which suggests respondents were mostly satisfied with this list of topics.

Category	Mean	SD	Rank
General spring turkey season (April 15-May 25)	3.97	1.06	1
Number of tags available	3.53	1.15	2
Turkey population in the area you hunt	3.51	1.22	3
Youth turkey hunting opportunities	3.50	0.92	4
General fall season where you hunt	3.42	1.06	5
Price of turkey tags	3.39	1.23	6
Number of hunters where you hunt	3.12	1.13	7

Question 39 - Currently, there is a 7-day youth hunt immediately before the general spring turkey season. In the past a 2-day youth hunt was offered on the weekend before the general spring turkey season. Which do you prefer? (Please check one.)

Nearly 72% of survey respondents preferred the existing 7-day youth hunting season.

Category	Number	Total	Percentage	SE
7-day youth season	3512	4890	71.8	0.6
2-day youth season; weekend before the general turkey season	1218	4890	24.9	0.6
I do not support youth hunting seasons	160	4890	3.3	0.3



Part 5 – About You

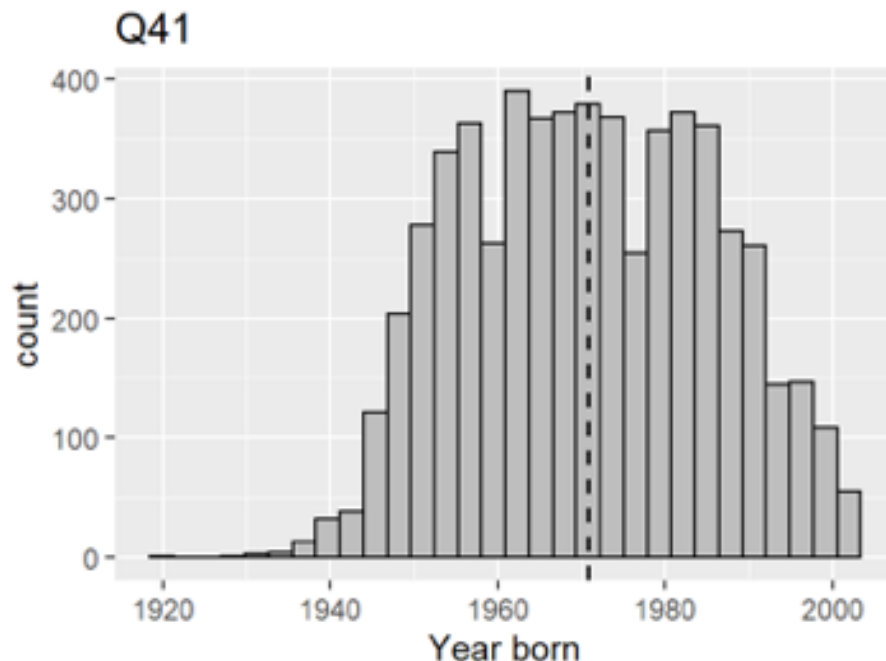
Question 40 - Are you currently a member of: (Check all that apply)

Over 61% of survey respondents reported they were not members of “any national/statewide conservation/hunting organization; less than 7% reported membership in the National Wild Turkey Federation.

Category	Number	Total	Percentage	SE
I am not a member of any national/statewide conservation hunting organization	3501	5742	61	0.6
Other national/statewide conservation/hunting organization(s)	1660	5742	28.9	0.6
Local sportsman’s club	624	5742	10.9	0.4
National Wild Turkey Federation	390	5742	6.8	0.3

Question 41 - What year were you born?

Average age of respondents was 49 years.



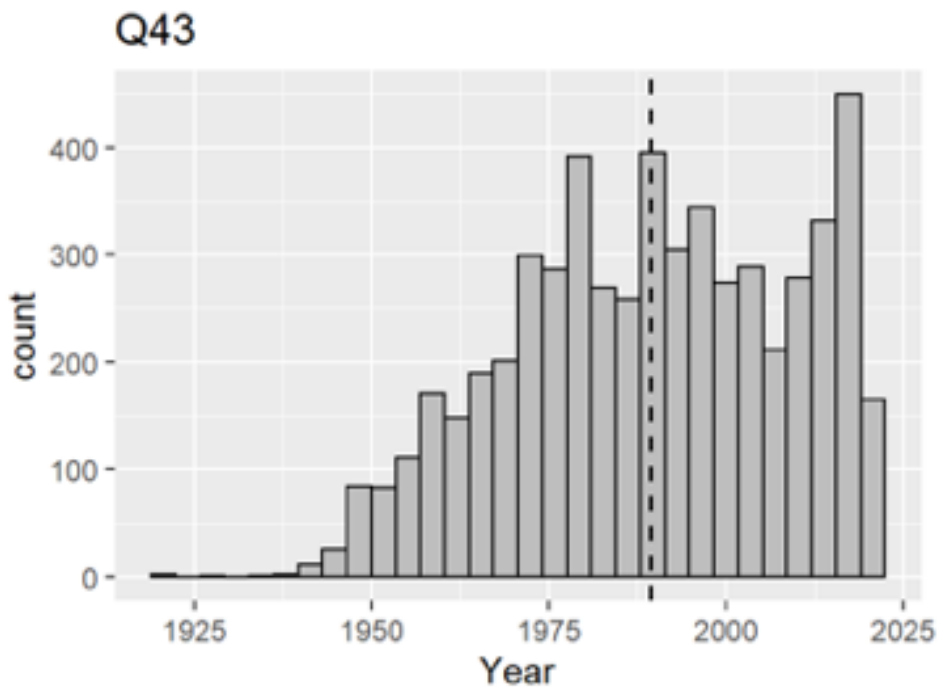
Question 42 – Are you a resident of Idaho?

Over 93% of survey respondents were Idaho residents.

Response	Number	Total	Percentage	SE
No	412	6065	6.8	0.3
Yes	5653	6065	93.2	0.3

Question 43 – What year did you become a resident of Idaho?

Average year of Idaho residency of respondents was 1989.



Question 44 - What is your gender?

Nearly 93% of survey respondents were male.

Gender	Number	Total	Percentage	SE
Male	5587	6029	92.7	0.3
Female	345	6029	5.7	0.3
Other	2	6029	0.0	0.0
I prefer not to answer	95	6029	1.6	0.2

Question 45 - Which one or more of the following would you say is your race or ethnicity?

Nearly 90% of survey respondents reported their race or ethnicity as white.

Race or ethnicity	Number	Total	Percentage	SE
Asian	32	6013	0.5	0.1
Black or African American	19	6013	0.3	0.1
Don't know	26	6013	0.4	0.1
Hispanic or Latino	100	6013	1.7	0.2
I prefer not to answer	490	6013	8.1	0.4
Indigenous (Native American or Alaskan native)	98	6013	1.6	0.2
Native Hawaiian or Pacific islander	36	6013	0.6	0.1
White	5358	6013	89.1	0.4
Other	65	6013	1.1	0.1

Question 46 -What is the highest level of education you have completed?

Nearly 68% of survey respondents reported a level of education beyond high school.

Education level	Number	Total	Percentage	SE
Less than high school	52	6009	0.9	0.1
High school graduate	1593	6009	26.5	0.6
Two-year college degree	902	6009	15.0	0.5
Four-year college degree	1685	6009	28.0	0.6
Vocation/Trade school certificate	579	6009	9.6	0.4
Graduate degree	908	6009	15.1	0.5
I prefer not to answer	290	6009	4.8	0.3

Question 47 - What was your annual household income from all sources, before taxes, in 2019?

Household income	Number	Total	Percentage	SE
Less than \$21,000	151	5971	2.5	0.2
\$21,000 - \$49,999	816	5971	13.7	0.4
\$50,000 - \$74,999	1041	5971	17.4	0.5
\$75,000 - \$99,999	1018	5971	17.0	0.5
\$100,000 - \$149,000	1099	5971	18.4	0.5
\$150,000 - \$209,000	434	5971	7.3	0.3
Greater than \$210,000	366	5971	6.1	0.3
I prefer not to answer	1046	5971	17.5	0.5

Question 48 - What is your current employment status?

Nearly 66% of survey respondents reported full-time employment.

Employment status	Number	Total	Percentage	SE
Full-time employee	3959	6008	65.9	0.6
Part-time employee	208	6008	3.5	0.2
Temporary employee	46	6008	0.8	0.1
Unemployed	116	6008	1.9	0.2
Retired	1233	6008	20.5	0.5
Disabled	90	6008	1.5	0.2
I prefer not to answer	356	6008	5.9	0.3



Part 6 – About Surveys

Question 49 - Thinking about the surveys that you are asked to participate in, please indicate your level of agreement with the following statements.

A - I enjoy responding to questionnaires.

Nearly 45% of survey respondents reported they enjoy responding to questionnaires.

Response	Number	Total	Percentage	SE
Strongly disagree	194	4926	3.9	0.3
Disagree	455	4926	9.2	0.4
Neither disagree nor agree	2086	4926	42.3	0.7
Agree	1593	4926	32.3	0.7
Strongly agree	598	4926	12.1	0.5

B - I enjoy being asked to complete a survey.

Nearly 47% of survey respondents reported they enjoy being asked to complete a survey.

Response	Number	Total	Percentage	SE
Strongly disagree	182	4908	3.7	0.3
Disagree	425	4908	8.7	0.4
Neither disagree nor agree	2011	4908	41.0	0.7
Agree	1640	4908	33.4	0.7
Strongly agree	650	4908	13.2	0.5

C - Surveys are interesting.

Over 50% of survey respondents reported surveys are interesting.

Response	Number	Total	Percentage	SE
Strongly disagree	155	4912	3.2	0.2
Disagree	402	4912	8.2	0.4
Neither disagree nor agree	1887	4912	38.4	0.7
Agree	1928	4912	39.3	0.7
Strongly agree	540	4912	11.0	0.4

D - Surveys are important for society.

Over 55% of survey respondents reported surveys are important for society.

Response	Number	Total	Percentage	SE
Strongly disagree	106	4897	2.2	0.2
Disagree	206	4897	4.2	0.3
Neither disagree nor agree	1383	4897	28.2	0.6
Agree	2268	4897	46.3	0.7
Strongly agree	934	4897	19.1	0.6

E - A lot can be learned from information collected through surveys.

Over 75% of survey respondents reported a lot can be learned from information collected through surveys.

Response	Number	Total	Percentage	SE
Strongly disagree	90	4924	1.8	0.2
Disagree	118	4924	2.4	0.2
Neither disagree nor agree	982	4924	19.9	0.6
Agree	2530	4924	51.4	0.7
Strongly agree	1204	4924	24.5	0.6

F - Completing surveys is a valuable use of time.

Nearly 56% of survey respondents reported completing surveys is a valuable use of time.

Response	Number	Total	Percentage	SE
Strongly disagree	138	4873	2.8	0.2
Disagree	275	4873	5.6	0.3
Neither disagree nor agree	1736	4873	35.6	0.7
Agree	2045	4873	42.0	0.7
Strongly agree	679	4873	13.9	0.5

G - I receive too many requests to participate in surveys.

Less than 15% of survey respondents reported they receive too many requests to participate in surveys.

Response	Number	Total	Percentage	SE
Strongly disagree	617	4878	12.6	0.5
Disagree	1206	4878	24.7	0.6
Neither disagree nor agree	2352	4878	48.2	0.7
Agree	524	4878	10.7	0.4
Strongly agree	179	4878	3.7	0.3

H - Opinion polls are an invasion of privacy.

Nearly 60% of survey respondents reported opinion polls are NOT an invasion of privacy.

Response	Number	Total	Percentage	SE
Strongly disagree	1353	4880	27.7	0.6
Disagree	1551	4880	31.8	0.7
Neither disagree nor agree	1704	4880	34.9	0.7
Agree	201	4880	4.1	0.3
Strongly agree	71	4880	1.5	0.2

I - It is exhaustive to answer so many questions in a survey.

Over 46% of survey respondents reported it was NOT exhaustive to answer so many questions in a survey.

Response	Number	Total	Percentage	SE
Strongly disagree	874	4875	17.9	0.5
Disagree	1311	4875	26.9	0.6
Neither disagree nor agree	1850	4875	37.9	0.7
Agree	631	4875	12.9	0.5
Strongly agree	209	4875	4.3	0.3

Survey respondents were asked to rate their level of agreement with the below statements related to IDFG surveys they have been asked to complete (where 1 = strongly disagree and 5 = strongly agree). Survey respondents most agreed with “a lot can be learned from information collected through surveys” and “surveys are important for society.” Respondents most disagreed with “opinion polls are an invasion of privacy.” Results suggest most survey respondents find value in completing IDFG surveys.

Statement	Mean	SD
A lot can be learned from information collected through surveys	3.94	0.84
Surveys are important for society	3.76	0.88
Completing surveys is a valuable use of time	3.59	0.90
Surveys are interesting	3.47	0.91
I enjoy being asked to complete a survey	3.44	0.95
I enjoy responding to questionnaires	3.40	0.95
I receive too many requests to participate in surveys	2.68	0.95
It is exhaustive so answer to many questions in a survey	2.59	1.06
Opinion polls are an invasion of privacy	2.20	0.94



Appendix A. 2020 Idaho Wild Turkey Hunter Opinion Survey.

Part 1 – Your Turkey Hunting Background

1. Have you ever hunted turkeys (not necessarily in Idaho)?

- ☐ No End of survey
☐ Yes

2. In what year did you first hunt turkey, not necessarily in Idaho? If uncertain please estimate. _____ year (selection of years 1920-2020)

3. Have you ever hunted turkeys in Idaho?

- ☐ No Go to Part 5 – question 40
☐ Yes

4. How many years have you hunted turkey in Idaho? If uncertain please estimate. (Choose one.)

- ☐ 1-4 Years
☐ 5-9 Years
☐ 10-14 Years
☐ 15-19 Years
☐ 20+ Years

5. Have you hunted turkey in Idaho in the last five (5) years?

- ☐ No If no, go to question 7. (ask why they haven't hunted)
☐ Yes If yes, go to question 6.

6. In which of the last five (5) years have you hunted turkey in Idaho? (Choose all that apply.) After answering this question go to question 8 (skip #7 because they HAVE hunted)

- | | |
|-------------------------------|-------------------------------|
| <input type="checkbox"/> 2020 | <input type="checkbox"/> 2017 |
| <input type="checkbox"/> 2019 | <input type="checkbox"/> 2016 |
| <input type="checkbox"/> 2018 | |

7. Why have you **NOT** hunted turkey in Idaho in the last five (5) years, what factors have influenced your decision not to hunt? (Choose all that apply.) After this question go to Part 5 – question 40.

- ☐ Complicated season structure
- ☐ Cost of travel or hunting equipment
- ☐ Limited access – no place to hunt
- ☐ Limited opportunity where you live (e.g., few birds, only controlled hunts)
- ☐ Too many other hunters
- ☐ Lack of experience/knowledge/mentor
- ☐ Lack of success
- ☐ Lack of time
- ☐ I don't hunt for wild turkeys, but the tag is included in my Sportsmen package
- ☐ Other:

8. In which type(s) of turkey hunts have you participated? (Choose all that apply.)

- ☐ Spring general season
- ☐ Spring controlled hunt season
- ☐ Fall general season
- ☐ Fall controlled hunt season
- ☐ Depredation hunt
- ☐ Landowner permission hunt

9. Which ONE type of turkey season do you prefer most? (Choose one.)

- ☐ Spring general season
- ☐ Spring controlled hunt season
- ☐ Fall general season
- ☐ Fall controlled hunt season
- ☐ Depredation hunt
- ☐ Landowner permission hunt

Part 2 –SPRING 2020 Turkey Hunting Season

10. Did you hunt turkey during the SPRING 2020 turkey hunting season?

- ☐ No If no, go to question 19 (questions about fall hunting)
☐ Yes

11. In which Region and unit did you hunt the MOST for turkey during the SPRING 2020 season?

_____ SELECT REGION
_____ SELECT UNIT

12. How many days did you hunt for turkey during the SPRING 2020 season?

_____ days

13. Did you harvest a turkey during the SPRING 2020 season?

- ☐ No ☐ Yes

14. What types(s) of land did you hunt during the SPRING 2020 turkey season in Idaho? (Choose ALL that apply.)

- ☐ Public lands
☐ Private lands without a fee ☐ Access Yes! properties
☐ Private lands you lease or pay to hunt on ☐ I don't know

15. Please select the ONE property type where you primarily hunted turkey in Idaho during the SPRING 2020 season: (Choose one.)

- ☐ Public lands
☐ Private lands without a fee
☐ Private lands you lease or pay to hunt on
☐ Access Yes! properties
☐ I don't know

16. How would you rate the overall quality of your wild turkey hunting experience during the SPRING 2020 season?

Poor	Fair	Good	Very Good	Excellent
<input type="checkbox"/>	<input type="checkbox"/>	<input type="checkbox"/>	<input type="checkbox"/>	<input type="checkbox"/>

17. How IMPORTANT are the following experiences to your Idaho SPRING turkey hunting experience?

	Not at all Important	Slightly Important	Somewhat Important	Very Important	Extremely Important
Seeing turkeys	<input type="checkbox"/>	<input type="checkbox"/>	<input type="checkbox"/>	<input type="checkbox"/>	<input type="checkbox"/>
Hearing turkeys	<input type="checkbox"/>	<input type="checkbox"/>	<input type="checkbox"/>	<input type="checkbox"/>	<input type="checkbox"/>
Calling turkeys in	<input type="checkbox"/>	<input type="checkbox"/>	<input type="checkbox"/>	<input type="checkbox"/>	<input type="checkbox"/>
Killing a tom	<input type="checkbox"/>	<input type="checkbox"/>	<input type="checkbox"/>	<input type="checkbox"/>	<input type="checkbox"/>
Killing a jake	<input type="checkbox"/>	<input type="checkbox"/>	<input type="checkbox"/>	<input type="checkbox"/>	<input type="checkbox"/>
Killing a trophy turkey (i.e., large birds with long beards, long spurs)	<input type="checkbox"/>	<input type="checkbox"/>	<input type="checkbox"/>	<input type="checkbox"/>	<input type="checkbox"/>
Killing multiple turkeys	<input type="checkbox"/>	<input type="checkbox"/>	<input type="checkbox"/>	<input type="checkbox"/>	<input type="checkbox"/>
Not seeing hunters	<input type="checkbox"/>	<input type="checkbox"/>	<input type="checkbox"/>	<input type="checkbox"/>	<input type="checkbox"/>
Not being interfered with by other hunters	<input type="checkbox"/>	<input type="checkbox"/>	<input type="checkbox"/>	<input type="checkbox"/>	<input type="checkbox"/>
Not encountering off-road vehicles	<input type="checkbox"/>	<input type="checkbox"/>	<input type="checkbox"/>	<input type="checkbox"/>	<input type="checkbox"/>
Hunting with an outfitter/guide	<input type="checkbox"/>	<input type="checkbox"/>	<input type="checkbox"/>	<input type="checkbox"/>	<input type="checkbox"/>
Hunting close to home or cabin	<input type="checkbox"/>	<input type="checkbox"/>	<input type="checkbox"/>	<input type="checkbox"/>	<input type="checkbox"/>
Access to private lands	<input type="checkbox"/>	<input type="checkbox"/>	<input type="checkbox"/>	<input type="checkbox"/>	<input type="checkbox"/>
Access to public lands	<input type="checkbox"/>	<input type="checkbox"/>	<input type="checkbox"/>	<input type="checkbox"/>	<input type="checkbox"/>

18. To what extent did each actually HAPPEN during your SPRING 2020 Idaho turkey hunting season?

Did you...	Not at all	Slightly	Somewhat	Largely	Very much
See turkeys	<input type="checkbox"/>	<input type="checkbox"/>	<input type="checkbox"/>	<input type="checkbox"/>	<input type="checkbox"/>
Hear turkeys	<input type="checkbox"/>	<input type="checkbox"/>	<input type="checkbox"/>	<input type="checkbox"/>	<input type="checkbox"/>
Call turkeys in	<input type="checkbox"/>	<input type="checkbox"/>	<input type="checkbox"/>	<input type="checkbox"/>	<input type="checkbox"/>
Kill a tom	<input type="checkbox"/>	<input type="checkbox"/>	<input type="checkbox"/>	<input type="checkbox"/>	<input type="checkbox"/>
Kill a jake	<input type="checkbox"/>	<input type="checkbox"/>	<input type="checkbox"/>	<input type="checkbox"/>	<input type="checkbox"/>
Kill a trophy turkey (i.e., large birds with long beards, long spurs)	<input type="checkbox"/>	<input type="checkbox"/>	<input type="checkbox"/>	<input type="checkbox"/>	<input type="checkbox"/>
Kill multiple turkeys	<input type="checkbox"/>	<input type="checkbox"/>	<input type="checkbox"/>	<input type="checkbox"/>	<input type="checkbox"/>
Not see other hunters	<input type="checkbox"/>	<input type="checkbox"/>	<input type="checkbox"/>	<input type="checkbox"/>	<input type="checkbox"/>
Not be interfered with by other hunters	<input type="checkbox"/>	<input type="checkbox"/>	<input type="checkbox"/>	<input type="checkbox"/>	<input type="checkbox"/>
Not encounter off-road vehicles	<input type="checkbox"/>	<input type="checkbox"/>	<input type="checkbox"/>	<input type="checkbox"/>	<input type="checkbox"/>
Hunt with an outfitter/guide	<input type="checkbox"/>	<input type="checkbox"/>	<input type="checkbox"/>	<input type="checkbox"/>	<input type="checkbox"/>
Hunt close to home or cabin	<input type="checkbox"/>	<input type="checkbox"/>	<input type="checkbox"/>	<input type="checkbox"/>	<input type="checkbox"/>
Have access to private lands	<input type="checkbox"/>	<input type="checkbox"/>	<input type="checkbox"/>	<input type="checkbox"/>	<input type="checkbox"/>
Have access to public lands	<input type="checkbox"/>	<input type="checkbox"/>	<input type="checkbox"/>	<input type="checkbox"/>	<input type="checkbox"/>

Part 3 – Fall 2019 Turkey Hunting Season

19. Did you hunt for turkey during the fall hunting seasons?

- ☐ No. Go to question 20 (why don't you hunt during fall seasons)
- ☐ Yes. Go to question 21 (Fall 2019 hunting)

20. What factors have most influenced your decision NOT to participate in hunting turkey during the fall? (Choose all that apply.) After answering this question go to Part 4 Populations and Management, question 30.

- ☐ Cost of tags and/or license
- ☐ Busy with other hunting in the fall
- ☐ Cost of travel or hunting equipment
- ☐ Limited access – no place to hunt
- ☐ Limited opportunity where you live (e.g., few birds, only controlled hunts)
- ☐ Too many other hunters
- ☐ Lack of time
- ☐ Do not enjoy fall turkey hunting
- ☐ I don't hunt for wild turkey, but the tag is included in my Sportsmen package
- ☐ Other:

21. Did you hunt for turkey during the FALL 2019 turkey hunting season?

- ☐ No. Go to Part 4 Populations and Management
- ☐ Yes

22. In which Region and unit did you hunt most often for turkey during the FALL 2019 season?

_____ SELECT REGION

_____ SELECT UNIT

23. How many days did you hunt for turkey during the FALL 2019 season?

_____ days

24. Did you harvest a turkey during the FALL 2019 season?

- ☐ No
☐ Yes

25. What type(s) of land did you hunt during the FALL 2019 turkey season in Idaho?
(Choose ALL that apply.)

- ☐ Public lands
☐ Private lands without a fee
☐ Private lands you lease or pay to hunt on
☐ Access Yes! properties
☐ I don't know

26. Please select the ONE property type where you primarily hunted turkey in Idaho during the FALL 2019 season: (Choose one.)

- ☐ Public lands
☐ Private lands without a fee
☐ Private lands you lease or pay to hunt on
☐ Access Yes! properties
☐ I don't know

27. How would you rate the overall quality of your wild turkey hunting experience during the FALL 2019 season?

- | | | | | |
|--------------------------|--------------------------|--------------------------|--------------------------|--------------------------|
| Poor | Fair | Good | Very Good | Excellent |
| <input type="checkbox"/> | <input type="checkbox"/> | <input type="checkbox"/> | <input type="checkbox"/> | <input type="checkbox"/> |

28. How IMPORTANT are the following experiences to your Idaho FALL turkey hunting experience?

	Not at all Important	Slightly Important	Somewhat Important	Very Important	Extremely Important
Seeing turkeys	<input type="checkbox"/>	<input type="checkbox"/>	<input type="checkbox"/>	<input type="checkbox"/>	<input type="checkbox"/>
Hearing turkeys	<input type="checkbox"/>	<input type="checkbox"/>	<input type="checkbox"/>	<input type="checkbox"/>	<input type="checkbox"/>
Calling turkeys in	<input type="checkbox"/>	<input type="checkbox"/>	<input type="checkbox"/>	<input type="checkbox"/>	<input type="checkbox"/>
Killing a tom	<input type="checkbox"/>	<input type="checkbox"/>	<input type="checkbox"/>	<input type="checkbox"/>	<input type="checkbox"/>
Killing a jake	<input type="checkbox"/>	<input type="checkbox"/>	<input type="checkbox"/>	<input type="checkbox"/>	<input type="checkbox"/>
Killing a trophy turkey (i.e., large birds with long beards, long spurs)	<input type="checkbox"/>	<input type="checkbox"/>	<input type="checkbox"/>	<input type="checkbox"/>	<input type="checkbox"/>
Killing a hen	<input type="checkbox"/>	<input type="checkbox"/>	<input type="checkbox"/>	<input type="checkbox"/>	<input type="checkbox"/>
Killing multiple turkeys	<input type="checkbox"/>	<input type="checkbox"/>	<input type="checkbox"/>	<input type="checkbox"/>	<input type="checkbox"/>
Hunting with a dog	<input type="checkbox"/>	<input type="checkbox"/>	<input type="checkbox"/>	<input type="checkbox"/>	<input type="checkbox"/>
Not seeing other hunters	<input type="checkbox"/>	<input type="checkbox"/>	<input type="checkbox"/>	<input type="checkbox"/>	<input type="checkbox"/>
Not being interfered with by other hunters	<input type="checkbox"/>	<input type="checkbox"/>	<input type="checkbox"/>	<input type="checkbox"/>	<input type="checkbox"/>
Not encountering off-road vehicles	<input type="checkbox"/>	<input type="checkbox"/>	<input type="checkbox"/>	<input type="checkbox"/>	<input type="checkbox"/>
Hunting with an outfitter/guide	<input type="checkbox"/>	<input type="checkbox"/>	<input type="checkbox"/>	<input type="checkbox"/>	<input type="checkbox"/>
Hunting close to home or cabin	<input type="checkbox"/>	<input type="checkbox"/>	<input type="checkbox"/>	<input type="checkbox"/>	<input type="checkbox"/>
Access to private lands	<input type="checkbox"/>	<input type="checkbox"/>	<input type="checkbox"/>	<input type="checkbox"/>	<input type="checkbox"/>
Access to public lands	<input type="checkbox"/>	<input type="checkbox"/>	<input type="checkbox"/>	<input type="checkbox"/>	<input type="checkbox"/>

29. To what extent did each actually HAPPEN during your FALL 2019 Idaho turkey hunting season?

Did you...	Not at all	Slightly	Somewhat	Largely	Very much
See turkeys	<input type="checkbox"/>	<input type="checkbox"/>	<input type="checkbox"/>	<input type="checkbox"/>	<input type="checkbox"/>
Hear turkeys	<input type="checkbox"/>	<input type="checkbox"/>	<input type="checkbox"/>	<input type="checkbox"/>	<input type="checkbox"/>
Call turkeys in	<input type="checkbox"/>	<input type="checkbox"/>	<input type="checkbox"/>	<input type="checkbox"/>	<input type="checkbox"/>
Kill a tom	<input type="checkbox"/>	<input type="checkbox"/>	<input type="checkbox"/>	<input type="checkbox"/>	<input type="checkbox"/>
Kill a jake	<input type="checkbox"/>	<input type="checkbox"/>	<input type="checkbox"/>	<input type="checkbox"/>	<input type="checkbox"/>
Kill a trophy turkey (i.e., large birds with long beards, long spurs)	<input type="checkbox"/>	<input type="checkbox"/>	<input type="checkbox"/>	<input type="checkbox"/>	<input type="checkbox"/>
Kill a hen	<input type="checkbox"/>	<input type="checkbox"/>	<input type="checkbox"/>	<input type="checkbox"/>	<input type="checkbox"/>
Kill multiple turkeys	<input type="checkbox"/>	<input type="checkbox"/>	<input type="checkbox"/>	<input type="checkbox"/>	<input type="checkbox"/>
Hunt with a dog	<input type="checkbox"/>	<input type="checkbox"/>	<input type="checkbox"/>	<input type="checkbox"/>	<input type="checkbox"/>
Not see other hunters	<input type="checkbox"/>	<input type="checkbox"/>	<input type="checkbox"/>	<input type="checkbox"/>	<input type="checkbox"/>
Not be interfered with by other hunters	<input type="checkbox"/>	<input type="checkbox"/>	<input type="checkbox"/>	<input type="checkbox"/>	<input type="checkbox"/>
Not encounter off-road vehicles	<input type="checkbox"/>	<input type="checkbox"/>	<input type="checkbox"/>	<input type="checkbox"/>	<input type="checkbox"/>
Hunt with an outfitter/guide	<input type="checkbox"/>	<input type="checkbox"/>	<input type="checkbox"/>	<input type="checkbox"/>	<input type="checkbox"/>
Hunt close to home or cabin	<input type="checkbox"/>	<input type="checkbox"/>	<input type="checkbox"/>	<input type="checkbox"/>	<input type="checkbox"/>
Have access to private lands	<input type="checkbox"/>	<input type="checkbox"/>	<input type="checkbox"/>	<input type="checkbox"/>	<input type="checkbox"/>
Have access to public lands	<input type="checkbox"/>	<input type="checkbox"/>	<input type="checkbox"/>	<input type="checkbox"/>	<input type="checkbox"/>

Part 4 – Idaho Turkey Populations and Management

30. During the past five (5) years, what trend have you seen in the number of turkeys in the areas you most often hunt for turkey? (Choose one.)

A lot fewer

☐

Fewer

☐

About the same number

☐

More

☐

A lot more

☐

31. In thinking about the areas you most often hunt for turkey, would you say the turkey population is... (Choose one.)

Way too low

☐

Too low

☐

About right

☐

Too high

☐

Way too high

☐

32. In thinking about the areas you hunt for turkey, at what level do you think the turkey population should be managed? (Choose one.)

☐

Decrease population 50% or more (Significant)

☐

Decrease population 25% (Moderate)

☐

Decrease population 10% (Slight)

☐

No change – population is at a good level

☐

Increase population 10% (Slight)

☐

Increase population 25% (Moderate)

☐

Increase population 50% or more (Significant)

33. If there were more turkeys available to hunt closer to where you live, how likely is it that you would hunt them? (Choose one.)

Very Unlikely

☐

Unlikely

☐

Neutral

☐

Likely

☐

Very Likely

☐

34. If a winter turkey hunting season was available (December-March), would you participate? (Choose one.)

Very Unlikely	Unlikely	Neutral	Likely	Very Likely
<input type="checkbox"/>	<input type="checkbox"/>	<input type="checkbox"/>	<input type="checkbox"/>	<input type="checkbox"/>

35. Would you support a winter turkey hunting season if it allowed harvest of the following?

	Very Unlikely	Unlikely	Neutral	Likely	Very Likely
Only bearded turkeys	<input type="checkbox"/>	<input type="checkbox"/>	<input type="checkbox"/>	<input type="checkbox"/>	<input type="checkbox"/>
Only beardless turkeys	<input type="checkbox"/>	<input type="checkbox"/>	<input type="checkbox"/>	<input type="checkbox"/>	<input type="checkbox"/>
Any turkey	<input type="checkbox"/>	<input type="checkbox"/>	<input type="checkbox"/>	<input type="checkbox"/>	<input type="checkbox"/>

36. In general, turkey nuisance complaints occur in the fall and winter when turkeys are concentrated on wintering grounds. In areas where this occurs, what solutions do you support to reduce the overabundance of turkeys? (Choose ALL that apply.)

- ☐ Trap and move turkeys to other areas of Idaho with lower number of turkeys
- ☐ Trap and move turkeys to another state
- ☐ Kill permits/depredation hunts
- ☐ Expand fall youth hunt opportunities (e.g., more tags, more days, more areas)
- ☐ Add winter hunting season
- ☐ Allow either sex hunting in the fall/winter
- ☐ Allow harvest of only bearded turkeys in the fall
- ☐ Allow harvest of only beardless turkeys in the fall
- ☐ Supplemental feeding to disperse turkeys and reduce property damage
- ☐ Killing turkeys and donating to a food bank
- ☐ Other:

37. Please rate the LEVEL OF IMPORTANCE you believe IDFG SHOULD PLACE on each of the following activities:

	Not at all Important	Slightly Important	Somewhat Important	Very Important	Extremely Important
Seeing turkeys	<input type="checkbox"/>	<input type="checkbox"/>	<input type="checkbox"/>	<input type="checkbox"/>	<input type="checkbox"/>
Providing youth hunting opportunities	<input type="checkbox"/>	<input type="checkbox"/>	<input type="checkbox"/>	<input type="checkbox"/>	<input type="checkbox"/>
Providing spring hunting opportunities	<input type="checkbox"/>	<input type="checkbox"/>	<input type="checkbox"/>	<input type="checkbox"/>	<input type="checkbox"/>
Providing wild turkey hunting information	<input type="checkbox"/>	<input type="checkbox"/>	<input type="checkbox"/>	<input type="checkbox"/>	<input type="checkbox"/>
Simplifying turkey hunting regulations	<input type="checkbox"/>	<input type="checkbox"/>	<input type="checkbox"/>	<input type="checkbox"/>	<input type="checkbox"/>
Improving/enhancing habitat on private lands	<input type="checkbox"/>	<input type="checkbox"/>	<input type="checkbox"/>	<input type="checkbox"/>	<input type="checkbox"/>
Conducting classes on how to hunt wild turkey	<input type="checkbox"/>	<input type="checkbox"/>	<input type="checkbox"/>	<input type="checkbox"/>	<input type="checkbox"/>
Improving/enhancing habitat on public lands	<input type="checkbox"/>	<input type="checkbox"/>	<input type="checkbox"/>	<input type="checkbox"/>	<input type="checkbox"/>

38. How satisfied are you with the following?

	Very Unsatisfied	Somewhat Unsatisfied	Neutral	Somewhat Satisfied	Very Satisfied
Seeing turkeys	<input type="checkbox"/>	<input type="checkbox"/>	<input type="checkbox"/>	<input type="checkbox"/>	<input type="checkbox"/>
General spring turkey season (April 15-May 25)	<input type="checkbox"/>	<input type="checkbox"/>	<input type="checkbox"/>	<input type="checkbox"/>	<input type="checkbox"/>
General fall season where you hunt	<input type="checkbox"/>	<input type="checkbox"/>	<input type="checkbox"/>	<input type="checkbox"/>	<input type="checkbox"/>
Youth turkey hunting opportunities	<input type="checkbox"/>	<input type="checkbox"/>	<input type="checkbox"/>	<input type="checkbox"/>	<input type="checkbox"/>
Number of tags available	<input type="checkbox"/>	<input type="checkbox"/>	<input type="checkbox"/>	<input type="checkbox"/>	<input type="checkbox"/>
Turkey population in the area you hunt	<input type="checkbox"/>	<input type="checkbox"/>	<input type="checkbox"/>	<input type="checkbox"/>	<input type="checkbox"/>
Price of turkey tags	<input type="checkbox"/>	<input type="checkbox"/>	<input type="checkbox"/>	<input type="checkbox"/>	<input type="checkbox"/>
Number of hunters where you hunt	<input type="checkbox"/>	<input type="checkbox"/>	<input type="checkbox"/>	<input type="checkbox"/>	<input type="checkbox"/>

39. Currently, there is a 7-day youth hunt immediately before the general spring turkey season. In the past, a 2-day youth hunt was offered on the weekend before the general spring turkey season. Which do you prefer? (Choose one.)

- ☐ 7-day youth season
- ☐ 2-day youth season; weekend before the general turkey season
- ☐ I do not support youth hunting seasons

Part 5 – About You

40. Are you currently a member of: (Choose all that apply.)

- ☐ National Wild Turkey Federation
- ☐ Local sportsman's club
- ☐ Other national/statewide conservation/hunting organization(s)
Please describe:

- ☐ I am not a member of any national/statewide conservation/hunting organizations

41. What year were you born?

_____ year. Selection of years, 1920 – 2005 (no one under 18 will receive survey)

42. Are you a resident of Idaho? ☐ No. Go to question 44 ☐ Yes

43. What year did you become a resident of Idaho?

_____ year (Selection of years, 1920 - 2020)

44. What is your gender? ☐ Male ☐ Female

45. Which one or more of the following would you say is your race or ethnicity?
(Choose all that apply)

- ☐ ASIAN
- ☐ BLACK OR AFRICAN AMERICAN
- ☐ HISPANIC OR LATINO
- ☐ INDIGENOUS (NATIVE AMERICAN OR ALASKAN NATIVE)
- ☐ NATIVE HAWAIIAN OR OTHER PACIFIC ISLANDER
- ☐ WHITE
- ☐ DON'T KNOW
- ☐ OTHER
- ☐ I prefer not to answer

46. What is the highest level of education you have completed? (Choose one.)

- ☐ LESS THAN HIGH SCHOOL
- ☐ HIGH SCHOOL GRADUATE
- ☐ TWO-YEAR COLLEGE DEGREE
- ☐ FOUR-YEAR COLLEGE DEGREE
- ☐ VOCATIONAL/TRADE SCHOOL CERTIFICATE
- ☐ GRADUATE DEGREE
- ☐ I prefer not to answer

47. What was your annual household income from all sources, before taxes, in 2019? (Choose one.)

- ☐ LESS THAN \$20,000
- ☐ \$20,000 - \$49,999
- ☐ \$50,000 - \$74,999
- ☐ \$75,000 - \$99,999
- ☐ \$100,000 - \$149,999
- ☐ \$150,000 - \$199,999
- ☐ GREATER THAN \$200,000
- ☐ I prefer not to answer

48. What is your current employment status? (Choose one.)

- ☐ FULL-TIME EMPLOYEE
- ☐ PART-TIME EMPLOYEE
- ☐ TEMPORARY EMPLOYEE
- ☐ UNEMPLOYED
- ☐ RETIRED
- ☐ DISABLED
- ☐ I prefer not to answer

Part 6 – About SURVEYS

49. Thinking about the Idaho Fish and Game surveys in which you are asked to participate, please indicate your level of agreement with the following statements.

	Strongly disagree	Disagree	Neither disagree nor agree	Agree	Strongly agree
I enjoy responding to questionnaires	<input type="checkbox"/>	<input type="checkbox"/>	<input type="checkbox"/>	<input type="checkbox"/>	<input type="checkbox"/>
I enjoy being asked to complete a survey	<input type="checkbox"/>	<input type="checkbox"/>	<input type="checkbox"/>	<input type="checkbox"/>	<input type="checkbox"/>
Surveys are interesting	<input type="checkbox"/>	<input type="checkbox"/>	<input type="checkbox"/>	<input type="checkbox"/>	<input type="checkbox"/>
Surveys are important for society	<input type="checkbox"/>	<input type="checkbox"/>	<input type="checkbox"/>	<input type="checkbox"/>	<input type="checkbox"/>
A lot can be learned from information collected through surveys	<input type="checkbox"/>	<input type="checkbox"/>	<input type="checkbox"/>	<input type="checkbox"/>	<input type="checkbox"/>
Completing surveys is a valuable use of time	<input type="checkbox"/>	<input type="checkbox"/>	<input type="checkbox"/>	<input type="checkbox"/>	<input type="checkbox"/>
I receive too many requests to participate in surveys	<input type="checkbox"/>	<input type="checkbox"/>	<input type="checkbox"/>	<input type="checkbox"/>	<input type="checkbox"/>
Opinion polls are an invasion of privacy	<input type="checkbox"/>	<input type="checkbox"/>	<input type="checkbox"/>	<input type="checkbox"/>	<input type="checkbox"/>
It is exhaustive to answer so many questions in a survey	<input type="checkbox"/>	<input type="checkbox"/>	<input type="checkbox"/>	<input type="checkbox"/>	<input type="checkbox"/>