



IDAHO BIRDING TRAIL

Southeast Region

Pocatello • Idaho Falls

51 River Parkway

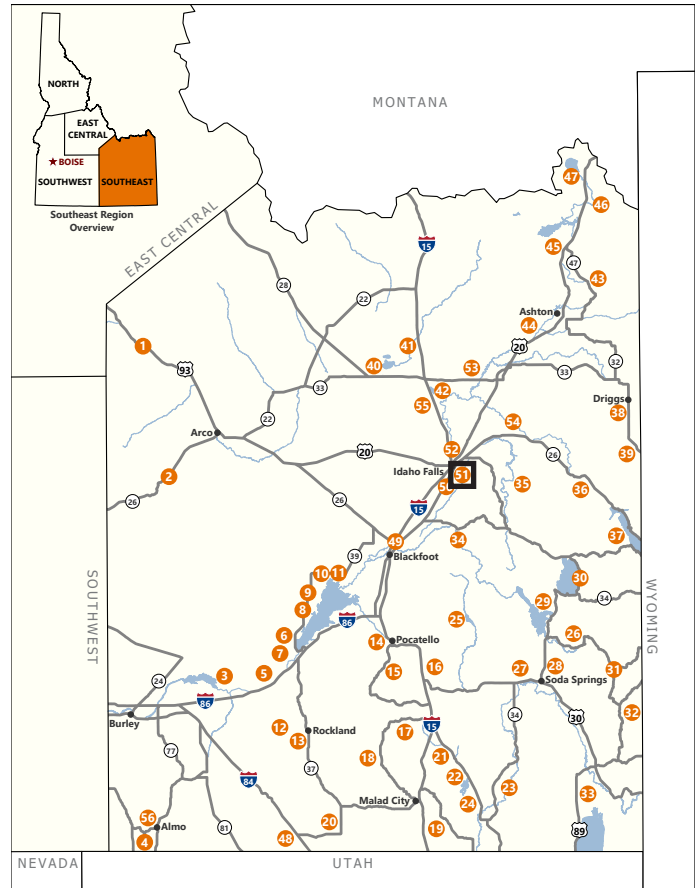


eBird ebird.org/hotspot/L1058896

LAT/LONG: 43.4973904,-112.0441532

DIRECTIONS: Take I-15 Exit #116, E on US 26 for 1.4 mi; L on Yellowstone Hwy/US 91 and go 1.9 mi; L onto W Broadway St; go 0.4 mi and turn R onto River Pkwy; park anywhere along the greenbelt walking trail.

The River Parkway greenbelt is a paved walking path along the Snake River in downtown Idaho Falls. It can be quite good for spring and fall migrants. Wilson's and Yellow-rumped Warblers, Caspian Terns, and Franklin's Gulls can be quite common along the greenbelt as they move down the Snake during migration. Mallard and Black-capped Chickadee are common year-round residents in the conifers along the river.



Idaho Falls