



IDAHO BIRDING TRAIL

Southeast Region

Pocatello • Idaho Falls

34 Wolverine Canyon Subloop

(208) 524-7500

eBird ebird.org/hotspot/L4690005

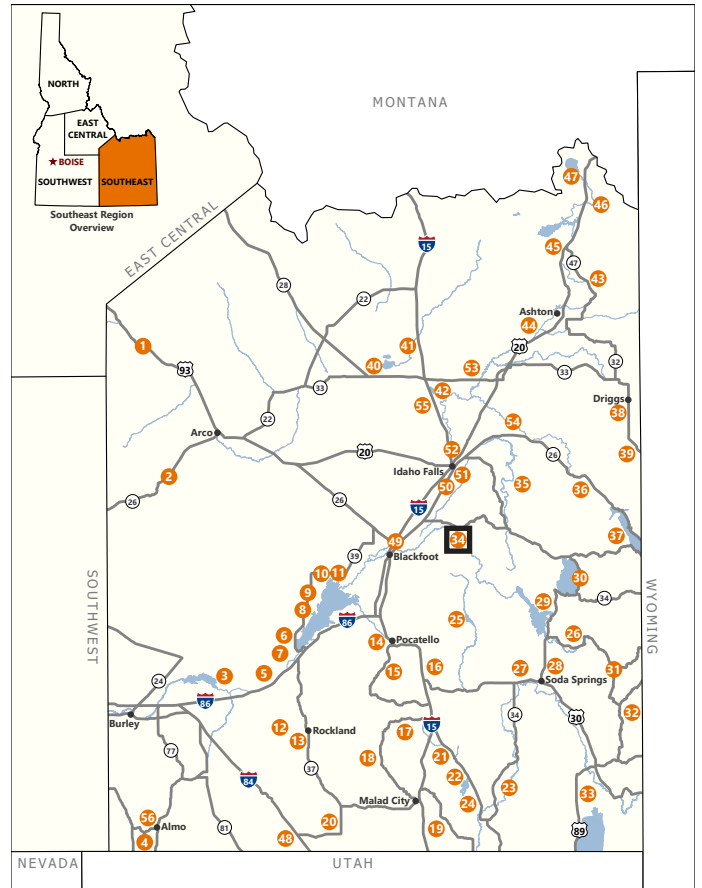
ebird.org/hotspot/L2231639

LAT/LONG: 43.2522547,-112.0150566

43.2522547,-112.0150566

DIRECTIONS: From Idaho Falls, I-15 S Exit #113; E to US 91; S through Shelley and the town of Firth; ~1.5 mi S of Firth, turn E onto Wolverine Rd (600 N); drive E 10.5 mi; stay L on Wolverine Rd at the intersection with Blackfoot River Rd; 2 mi farther is the entrance to the canyon; 8 mi to end of route at the intersection with Sellars Creek Rd.

Wolverine Canyon is a rugged and beautiful canyon that follows Wolverine Creek uphill through willow, sage/juniper, and cliff habitats and ends in mixed conifer forest on a 7100-foot summit. Miles 17.5-21, look for Western Kingbird, Yellow-breasted Chat, Gray Catbird, Black-headed Grosbeak. At mile 21, scan cliffs left (north) for White-throated Swift. Both Prairie and Peregrine Falcons have nested in the area. At the summit during June, listen for Flammulated, Northern Saw-whet, and Western Screech-Owls.



Idaho Falls