



IDAHO BIRDING TRAIL

Southeast Region

Pocatello • Idaho Falls

11 The Springfield Bottoms/McTucker Ponds

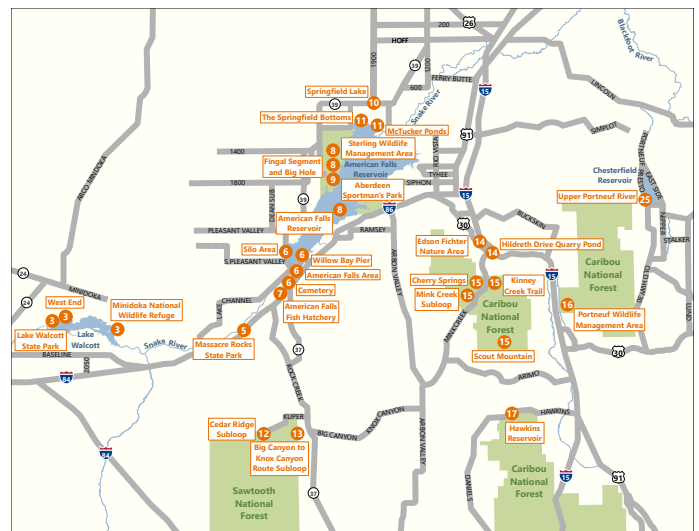
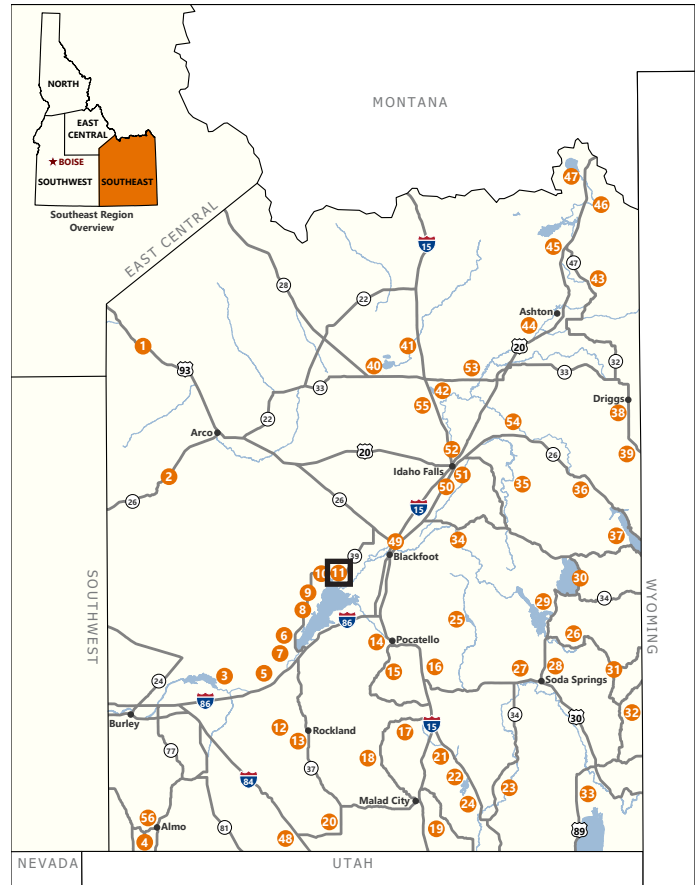
audubon.org/important-bird-areas/american-falls-reservoir

eBird ebird.org/hotspot/L1153249
ebird.org/hotspot/L1153242

LAT/LONG: 43.0446643, -112.6841068
 43.0359917, -112.6526499

DIRECTIONS: *From Springfield, S on Chandler Rd (1955 W) for 2 mi; stop at overlook at Danielson Creek Waterfall; continue on Chandler Rd; R (S) on Crystal Springs Rd (1950 W) for 0.8 mi; L on River Rd for 1.8 mi; cross cattle guard; stop at gravel pit ponds (McTucker Ponds); OR turn R 1 mi to boat ramp.*

The “Bottoms” refers to the northeastern corner of American Falls Reservoir and is public land. Highlights: Cattle Egret, waterfowl, and shorebirds. March is peak of spring waterfowl migration. Northern Pintail, Tundra and Trumpeter Swans, and Snow Goose can be seen. Fall is best for shorebirds. Marbled Godwit and yellowlegs are numerous.



Pocatello

