



IDAHO BIRDING TRAIL

Southeast Region

Pocatello • Idaho Falls

3 Minidoka National Wildlife Refuge/Lake Walcott State Park

961 E. Minidoka Dam Rd., Rupert • (208) 436-3589
parksand recreation.idaho.gov/parks/lake-walcott

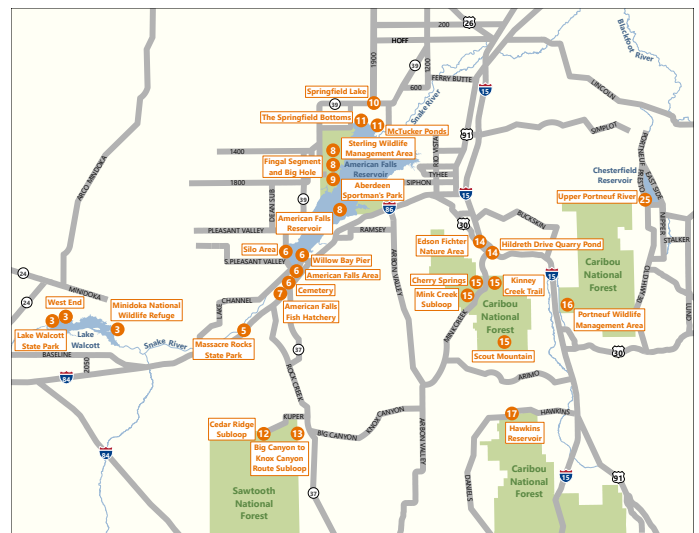
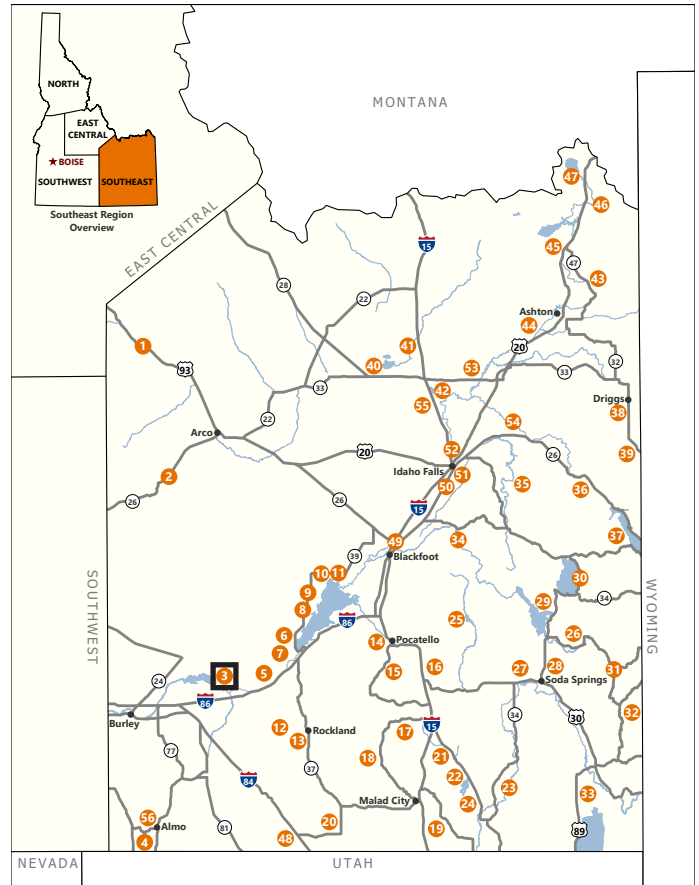


eBird ebird.org/hotspot/L356665

LAT/LONG: 42.672615, -113.481555

DIRECTIONS: At intersection of ID 24 and ID 25 in the town of Rupert, zero odometer; W on ID 24 (8th St); cross rr track; immediate R (N) on A St (Meridian Rd); immediately turn R (NE) again onto ID 24 (Read Ave); follow signs for ID 24 and Minidoka NWR; mi 5.9 turn R on Minidoka Dam Rd (400 N); drive toward park HQ; mi 11.3 Walcott SP entrance; NWR and SP share common gate; L at fork in rd; L to boat ramp, R to NWR.

The NWR extends for 25 miles along the Snake River from Minidoka Dam and includes all of Lake Walcott. The reservoir has several islands and marshy areas. The topography is primarily low, rolling hills with lava rock ledges up to 30 feet high along the shore. Highlights: Swainson's Hawk, Long-billed Curlew, and Tundra and Trumpeter Swans. During spring and fall migration, Lake Walcott State Park is a "one stop shop" to see many of Idaho's neotropical migrants.



Pocatello