



IDAHO BIRDING TRAIL

North Region

Coeur d'Alene • Lewiston • Moscow

40 City of Lewiston-Confluence of Snake and Clearwater Rivers

(208) 746-2313

eBird ebird.org/hotspot/L791142

LAT/LONG: 46.4257299,-117.0297146

The confluence of the Snake and Clearwater Rivers is a wintering spot for thousands of waterfowl and a few Bald Eagles. The area is easily accessed by a levee walkway that runs for miles along the rivers. Walking along the levee paths often turns up Pied-billed, Horned, Eared, and Western Grebes, depending on the season. Lesser Scaup, Ring-necked Duck, Gadwall, Green-winged Teal, Northern Pintail, Ruddy Duck, Common and Hooded Mergansers, Redhead, and Canvasback are regularly seen.

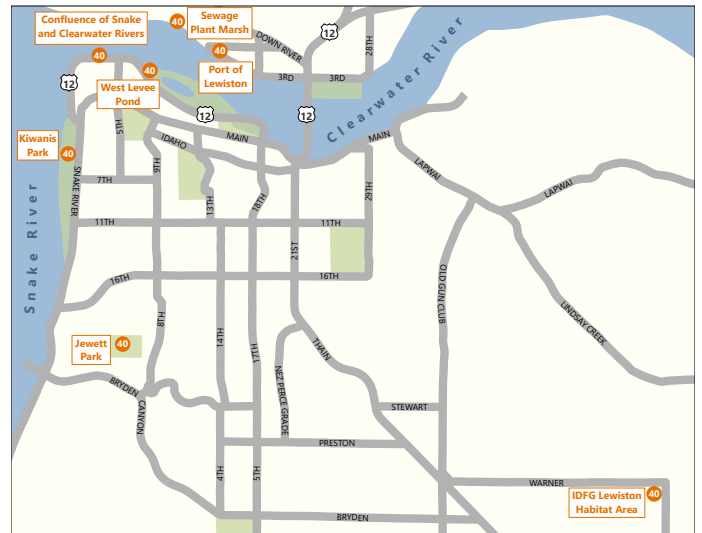
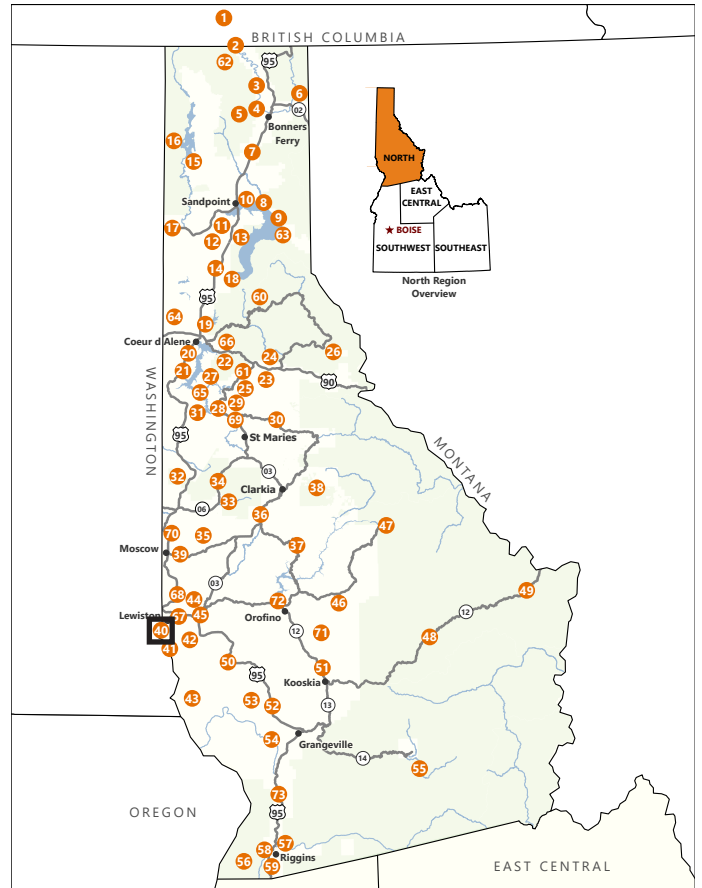
40 City of Lewiston-Sewage Plant Marsh

(208) 746-2313

eBird ebird.org/hotspot/L4978657

LAT/LONG: 46.4280076,-117.0186907

Year-round sightings might include Wood Duck, California Quail, Marsh Wren, and American Goldfinch. Virginia Rail and Sora during spring and summer.



Lewiston

