



# Chronic Wasting Disease Sampling

## Lymph Nodes Removal

(See [idfg.idaho.gov/CWD](http://idfg.idaho.gov/CWD) for a video on how to remove lymph nodes)

1. With head upside down, cut across the neck behind the jawbone. Continue cutting through the wind pipe until you hit bone.
2. Pull back the windpipe and cut the muscles toward the base of the skull. The lymph nodes are halfway between the jawbone and base of the skull on each side. They are kidney-shaped and much firmer than and rounder than the surrounding tissue.
3. Lymph nodes will be light or grayish color, or could be red if bloodshot. They are roughly the size of the tip of your finger, and if you cut them in half, you can see marbled coloring.
4. Do not mistake lymph nodes for salivary glands, which cannot be tested for CWD.
- 5 Remove excess fat and connective tissue from, the lymph nodes, bag them and ensure all information is filled out on the label.

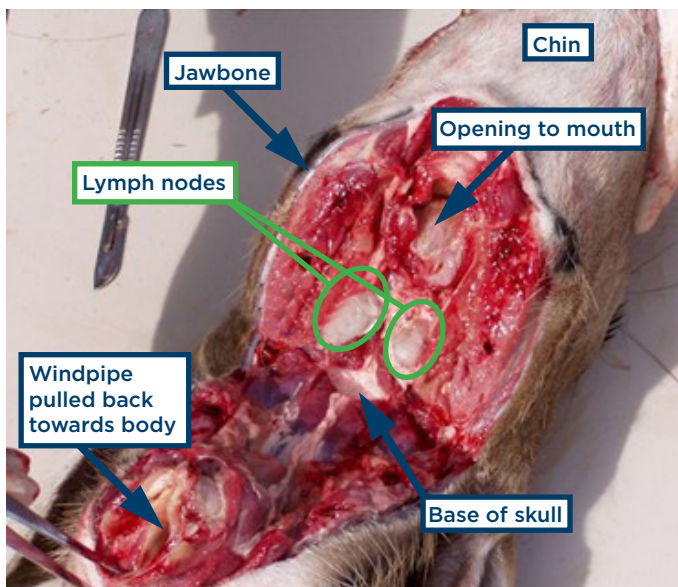
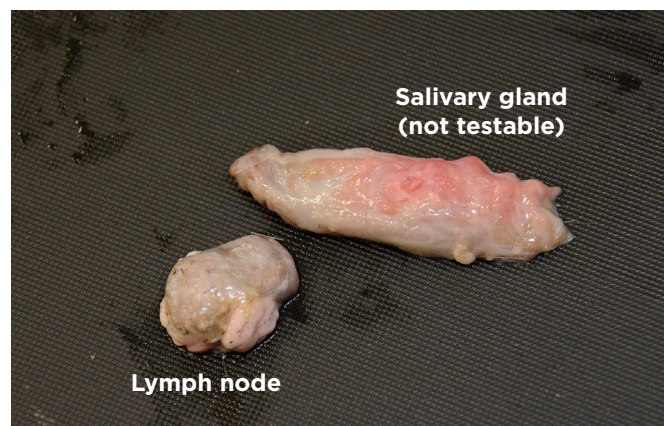
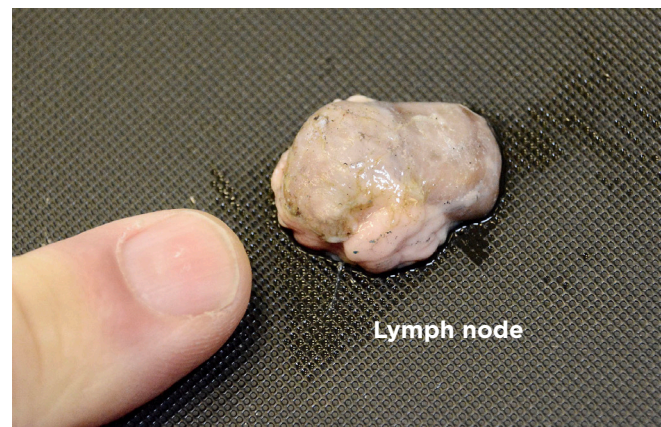


photo courtesy Richard Nelson





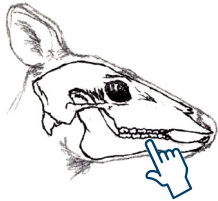
# CWD Sampling Requirements

All mule deer and white-tailed deer harvested in units 14, 18, 23, 63A, 64, 69, and a portion of unit 1 (the portion of Boundary County east of the Selkirk Mountains Crest) must be tested for chronic wasting disease.

## Submitting a sample



Begin by writing your name, tag number and hunt information on the sample bag label. NOTE: Please write legibly with pen or pencil.



Age the animal as a fawn, yearling or adult and write it on the sample bag label.



Collect lymph nodes from the harvested animal.



Seal bag securely and drop off sample at an IDFG regional office or drop-off location.



Retain card with barcode sticker so you can check your results at a later date.

Scan this QR code for more information including a video on lymph node extraction or visit [idfg.idaho.gov/cwd](http://idfg.idaho.gov/cwd)

