



IDAHO FISH AND GAME GOLDSHEET

Date: January 29, 2025

Agenda Item No. 9

Agenda Item: Chronic Wasting Disease Update

Bureau Chief Approval: SR

Prepared by: Stacey Dauwalter

Position/Title: Wildlife Health Program Coordinator

Background:

The Department developed the first Strategy for Chronic Wasting Disease Prevention, Detection, and Management for Idaho’s Wild Cervids (Deer, Elk, and Moose) in 2018. Since chronic wasting disease (CWD) had not been detected in Idaho at the time, the Strategy was primarily focused on pre-detection surveillance efforts. The Strategy was subsequently revised in 2021, just before Idaho’s first CWD detection in November 2021. Since 2021, there have been CWD detections in three additional GMUs (Units 1, 18, & 23), each with different timing, species, population demographics, and seasonal habitat use patterns. In mid-2024, staff were tasked with reviewing and updating the CWD Strategy, considering new CWD research and Idaho’s own lessons learned over the prior two and a half years. Staff are in the process of incorporating recently published research on population level impacts, surveillance strategies, management, and a new section focusing on human dimensions in the revision of the Strategy. This informational presentation will overview the anticipated revision to the Strategy and the planned timeline for its completion.

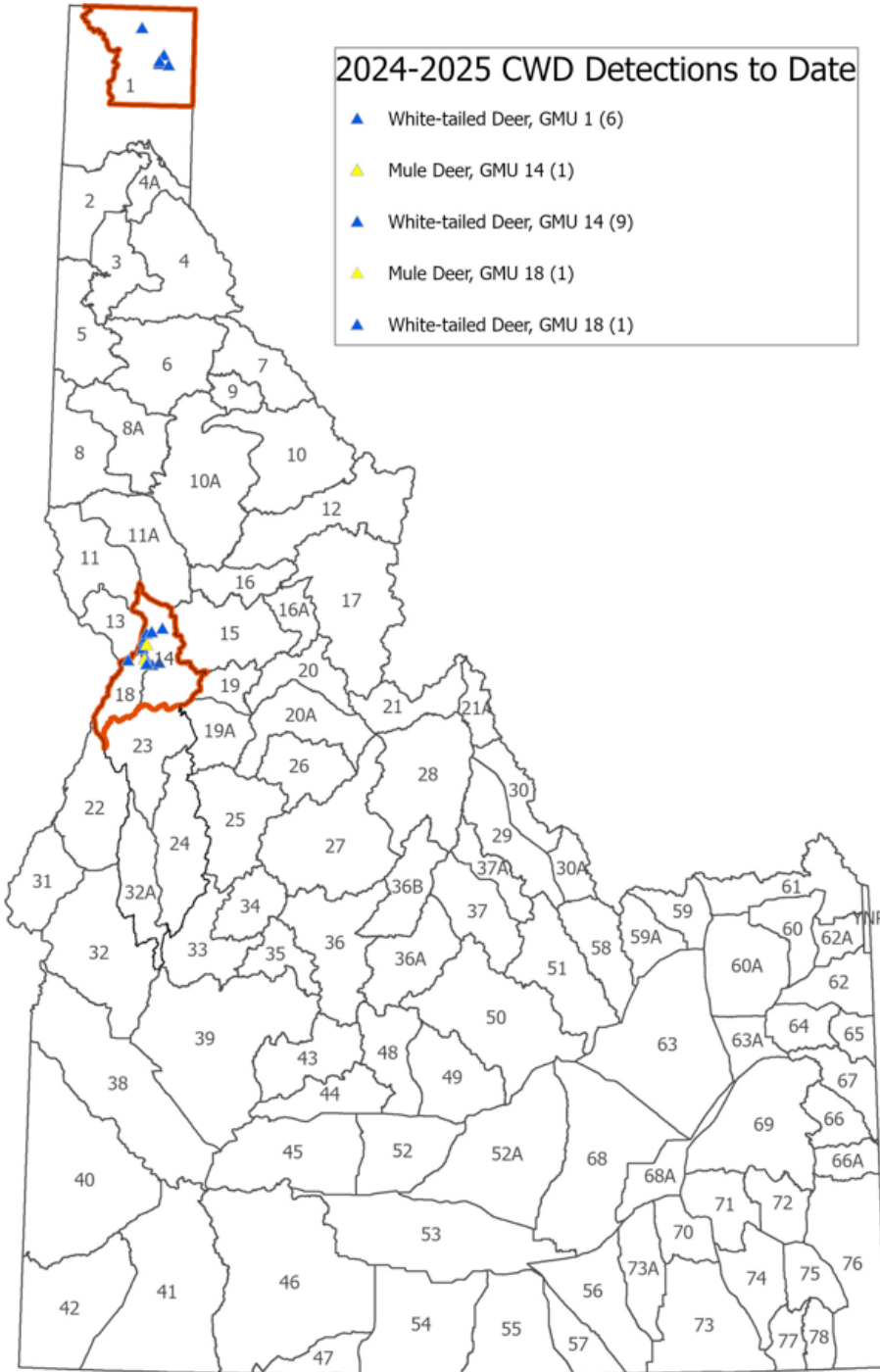
Staff will also present an update on the 2024-2025 CWD sampling and results to date. The following tables and map are accurate as of Dec 30, 2024.

Jul 1, 2024 - Dec 30, 2024				
CWD Total	Total	Not Detected	Suspect/Detected	Pending (shipped)
Statewide	5691	5247	20	424
GMU 1	1392	1143	6	243
GMU 1 CMZ	1165	939	6	220
GMU 14	690	626	12	52
GMU 18	239	222	2	15
GMU 23	430	418	-	12
GMU 24	203	196	-	7
GMU 32A	258	257	-	1



IDAHO FISH AND GAME GOLDSHEET

CWD Prevalence	White-tailed Deer	Mule Deer
GMU 1	0.49%	-
GMU 1 CMZ	0.60%	-
GMU 14	2.50%	0.05%
GMU 18	0.09%	-





IDAHO FISH AND GAME GOLDSHEET

Statutory Authority and/or Policy Issues:

IDFG, under the direction of the Idaho Fish and Game Commission, is the designated authority for wildlife management in the state and is charged with the mission to preserve, protect, perpetuate, and manage all wildlife for the public interest. Idaho code §§ 36-104(b) and 36-201, authorize the Commission to adopt rules governing the classification, protection, importation, transportation, possession, and sale of wildlife and wildlife parts of captive and free-ranging wildlife, including disease threats like Chronic Wasting Disease (IDAPA 13.01.06, “Rules Governing the Classification and Protection of Wildlife” and 13.01.10, “Rules Governing Importation, Possession, Release, Sale, or Salvage of Wildlife”).

Public Involvement Process:

Public will have the opportunity to comment on this topic at the Commission meeting public hearing. Department staff have also actively engaged the public in locales affected to date by positive CWD tests through a variety of public meeting opportunities.

Justification:

This agenda item is for Commission information on Chronic Wasting Disease and the actions the Department is taking to review and update the CWD Strategy.

Staff Recommendation:

N/A. This agenda item is for Commission information only.