

2015 - 2016 & 2016 - 2017 Gray Wolf

Hunting and Trapping Seasons and General Rules

General Rules

Wolf Harvest Limits: Harvest limits are established for some management zones. The wolf season in those zones will close immediately when the wolf harvest limit has been met.

To report a wolf harvest, call: 1-855-648-5558.

To find out which hunt zones are closed, call: 1-855-648-5558, or visit <http://fishandgame.idaho.gov/public/wildlife/wolves>.

For more specific information about the number of wolves harvested and reported for each management zone, call an Idaho Fish and Game office, or visit: <http://fishandgame.idaho.gov/public/wildlife/wolves>.

Evidence of Sex: Must be left attached to the hide of any wolf taken. External evidence of sex (scrotum, penis, or testicles for males, or vulva for females) must be left naturally attached to the hide until the mandatory check requirement has been satisfied. Either sex may be taken.

Tags: No person may take more wolves than the number for which he or she possesses legal tags. Tags must be validated and securely attached immediately upon killing a wolf.

Big Game Feeding Sites: It is unlawful to hunt, trap or pursue wolves within one-half mile of any active Idaho Fish and Game big game feeding site.

Weapons Restrictions: Same as for other big game animals, see page 98. Except it is legal to dispatch a trapped gray wolf with a rimfire rifle, rimfire handgun or muzzle-loading handgun.

Electronic Calls: Electronic calls may be used to attract wolves for the purpose of harvest.

Telemetry: It is unlawful to take wolves with the aid of radio-telemetry.

Dogs: Use of dogs to attract or pursue wolves is prohibited.

Retrieving Meat: Hunters and trappers are not required to retrieve meat from a harvested wolf. For tips on skinning a wolf, contact a regional Fish and Game office, see page 4.

Wolves with Radio Collars: Biologists use radio collars to monitor wolf activity, assess population status and help determine future hunting opportunity. Hunters and trappers are required to return any radio collars when they check in their wolves.

Mandatory Report and Check: Hunters and trappers must report killing a wolf **within 72 hours by calling the Wolf Reporting Number at 1-855-648-5558**. They must also, within 10 days of the date of kill, present the skull and hide to a Fish and Game regional office or conservation officer for removal and retention of a premolar tooth and to have the hide tagged with an official state export tag. To have a raw wolf hide in their possession without an official export tag attached, a person must have a fur buyer or taxidermist license or appropriate import documentation, except during the open season and for 10 days after the close of the season.

Fish and Game's headquarters office is not equipped to check in wolves. In the Boise area, these animals can be checked Monday through Friday, at the Fish and Game regional office in Nampa, 3101 S. Powerline Road, 208-465-8465, between 8 a.m. and 5 p.m. or by appointment at the Garden City facility, 109 W. 44th St., 208-327-7095.

A trapper or hunter may authorize another person to comply with the mandatory report, provided that person has enough information to accurately complete the necessary form. Proxy statement required, see page 100.

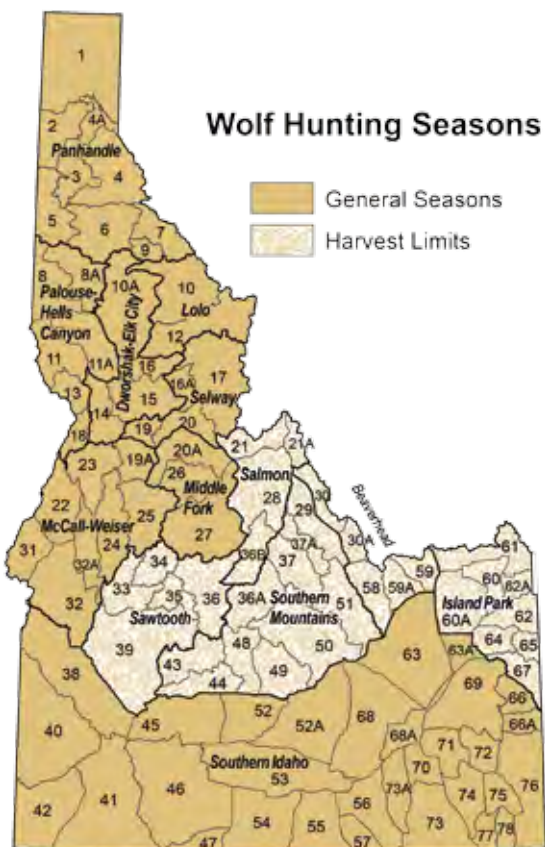
Please thaw your gray wolf hide and skull before bringing it in for tagging or staff members may not be able to complete check-in.

Nonresident Deer or Elk tags: A nonresident deer or elk tag, excluding Nonresident Junior Mentored/DAV deer and elk tags, may be used to tag a black bear, mountain lion or gray wolf. See page 110 for details.

Wolf Hunting and Trapping Tags

Hunters may buy up to five gray wolf hunting tags per calendar year. Certified wolf trappers may buy up to five gray wolf trapping tags per trapping season for use in those zones with an open trapping season. In addition to the gray wolf trapping tags, certified wolf trappers may use wolf hunting tags, in zones in which both the hunting and trapping seasons are open at the same time. Alternately, wolf trapping tags may be used for wolves that are hunted in zones in which both the hunting and trapping seasons are open at the same time. All hunting and trapping seasons and tag limits apply.

Please note that gray wolf trapping tags are valid for the entire trapping season, which spans more than one calendar year.



Gray wolf hunting tags, however, are valid only for a single calendar year and expire on December 31 of that year.

Can a trapper use a wolf hunting tag on a trapped wolf?

A person possessing a valid trapping license, with a Wolf Trapper Education course validation, may use a valid wolf hunting tag on a trapped wolf, as long as the trapping occurs in a zone/unit that has open wolf hunting and trapping seasons.

Can a trapper use a wolf trapping tag on a wolf not restrained by a trap?

A person possessing a valid trapping license, with a Wolf Trapper Education course validation, may use a valid wolf trapping tag to harvest a wolf not restrained by a trap, as long as they also possess a valid hunting license and there is an open hunting and trapping season in the zone/unit.

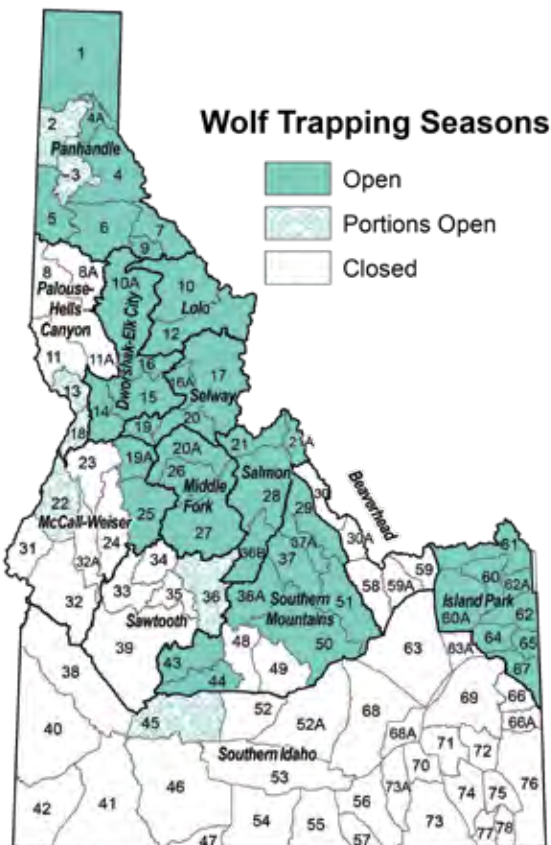
Harvest of trapped wolves and harvest of wolves not restrained by traps must comply with all wolf trapping and hunting rules, methods of take, and harvest reporting requirements.

Wolf Hunting Rules

Bait: Hunting big game over bait is illegal, except for black bears. Wolves may be taken incidentally to bear baiting. It is unlawful to hunt wolves within 200 yards of the perimeter of any designated dump or sanitary landfill.

Wolf Trapping Rules

A person must attend a wolf trapper education class and have a valid trapping license before trapping for wolves. Information on Wolf trapper classes are posted on the Fish and Game website. Dates and times are posted on the Fish and Game website <http://fishandgame.idaho.gov>



Trappers must check traps at least every 72 hours.

Methods of take: Ground sets are the only legal set allowed for trapping gray wolves. Ground sets are defined as any foothold trap, body-gripping trap or snare originally set in or on the land, including any traps elevated up to a maximum of 36 inches above the natural ground level. Snares must be equipped with diverters and a break-away device or stop within the loop. The inside jaw spread of foot-hold traps must not exceed nine inches.

Trapped gray wolves may be dispatched any time of day or night.

Bait: Bait for trapping is any animal parts; except bleached bones or liquid scent.

It is unlawful:

- To use any set within 30 feet of any visible bait.
- To use a dirt hole set with bait unless the bait remains covered at all times to protect raptors and other meat-eating birds from being caught accidentally.
- To trap wolves within 200 yards of the perimeter of any designated dump or sanitary landfill.
- To use any part of a domestic or wild origin game bird, big game, upland game, game fish or protected nongame wildlife, or to use live animals as bait or an attractant. See exceptions below.

Except it is legal:

- To trap wolves beyond 30 feet of a naturally killed big game species as long as the carcass is left undisturbed.
- To trap wolves beyond 30 feet of a legally-salvaged road kill. For more information and to complete the required form to legally-salvage road kill visit our website at <https://fishandgame.idaho.gov/species/roadkill> or call a Fish and Game office, see page 4.
- To trap wolves beyond 30 feet of a wolf carcass with hide removed.

Incidental Wolf Take: Trappers who do not have wolf tags and who accidentally capture a wolf must release the wolf uninjured and must report the capture to an Idaho Fish and Game employee within 5 days of release. If you have difficulty releasing the wolf please contact Fish and Game immediately.

Release of Non-Target Catches: All-nontarget species caught alive shall be released immediately. **Non-target species are defined as any species caught for which the season is closed.** Please contact Fish and Game immediately if you catch a fisher, wolverine or lynx.

Removing Trapped Animals of Another: No person shall remove a gray wolf from the trap or snare of another.

Tags for Traps: All traps or snares, shall have attached to the snare or the chain of every trap, a metal tag bearing, in legible English, the name and current address of the trapper or a six-digit number assigned by Fish and Game.

For additional trapping rules, See the Upland Game, Furbearer & Turkey Seasons and Rules.

2015 - 2016 & 2016 - 2017 Wolf Seasons

Zone (Game Management Units)	Harvest Limit	Hunting		Trapping	
		Season Dates	Notes	Season Dates	Notes
Panhandle (1, 2, 3, 4, 4A, 5, 6, 7, 9)		July 1 - June 30	<i>Private land only</i>	Oct 10 - Nov 14	<i>Foothold traps only</i> <i>Trapping Open in all of Units 7 & 9, that portion of Unit 4 within the North Fork of the Coeur d' Alene drainage upstream from Cataract Creek, and that portion of Unit 6 within the North Fork of the St Joe River drainage.</i> Units 1, 2, 3, 4A & 5 Closed
		Aug 30 - Mar 31		Nov 15 - Mar 31	<i>Trapping Open in all of Units 1, 4, 4A, 5, 6, 7, & 9</i> <i>Trapping open only in portions of Units 2 & 3,</i> <i>See notes 1 & 2, Page 79</i>
Palouse-Hells Canyon (8, 8A, 11, 11A, 13, 18)		July 1 - June 30	<i>Private land only</i>	Nov 15 - Mar 15	<i>Trapping Open in Units 13 & 18 on Private land only.</i> Units 8, 8A, 11 & 11A Closed
		Aug 30 - Mar 31			
Lolo (10, 12)		July 1 - June 30	<i>Private land only</i>	Oct 10 - Mar 31	
		Aug 30 - June 30			
Dworshak-Elk City (10A, 14, 15, 16)		July 1 - June 30	<i>Private land only</i>	Nov 15 - Mar 31	
		Aug 30 - Mar 31	<i>Hunting open in Units 10A, 14, 15, and that portion of Unit 16 south of the Selway River only</i>		
		Aug 30 - June 30	<i>Hunting open in that portion of Unit 16 north of the Selway River only</i>		
Selway (16A, 17, 19, 20)		July 1 - June 30	<i>Private land only</i>	Oct 10 - Mar 31	
		Aug 30 - June 30			
Middle Fork (20A, 26, 27)		Aug 30 - June 30		Nov 15 - Mar 31	
Salmon (21, 21A, 28, 36B)	45	Aug 30 - Mar 31	<i>See note 3, Page 79</i>	Nov 15 - Mar 31	<i>Foothold traps only, EXCEPT snares may be used on Private land and in that portion of Unit 28 within designated wilderness,</i> <i>See note 3, Page 79</i>
		Mar 31 - June 30	<i>Open in portions of Units 21 & 28 within designated wilderness only</i>		
McCall-Weiser (19A, 22, 23, 24, 25, 31, 32, 32A)		Aug 30 - Mar 31	<i>See note 4, Page 79,</i> <i>Motorized Hunting Rule Applies in Units 32 & 32A, See Pages 101 - 103</i>	Nov 15 - Mar 15	<i>Trapping Open in Units 19A & 25 only,</i> <i>Open in Unit 22 on Private land only,</i> Units 23, 24, 31, 32, & 32A Closed

2015 - 2016 & 2016 - 2017 Wolf Seasons

Zone (Game Management Units)	Harvest Limit	Hunting		Trapping	
		Season Dates	Notes	Season Dates	Notes
Sawtooth (33, 34, 35, 36, 39)	60	Aug 30 - Mar 31	See note 3, Page 79	Nov 15 - Mar 31	Trapping Open only in portion of Unit 36, Foothold traps only , EXCEPT snares may be used on Private land, Units 33, 34, 35 and 39 Closed , See notes 3 & 5, Page 79
Southern Mountains (29, 36A, 37, 37A, 43, 44, 48, 49, 50, 51)	40	Aug 30 - Mar 31	See notes 3 & 4, Page 79, Motorized Hunting Rule Applies in Units 29, 36A, 37, 37A, 49, 50 & 51, See Pages 101 - 103	Nov 15 - Mar 31	Trapping open in Units 29, 36A, 37, 37A, 43, 44, 50 & 51 only , Units 48 & 49 Closed , See notes 3 & 4, Page 79 Motorized Hunting Rule Applies in Units 29, 36A, 37, 37A, 49, 50, & 51, See Pages 101 - 103
Beaverhead (30, 30A, 58, 59, 59A)	10	Aug 30 - Mar 31	See notes 3 & 4, Page 79, Motorized Hunting Rule Applies, See Pages 101 - 103	Closed	
Island Park (60, 60A, 61, 62, 62A, 64, 65, 67)	30	Aug 30 - Mar 31	See note 3, Page 79	Nov 15 - Mar 31	Foothold traps only , EXCEPT snares may be used on Private land, See note 3, Page 79
Southern Idaho (38, 40, 41, 42, 45, 46, 47, 52, 52A, 53, 54, 55, 56, 57, 63, 63A, 66, 66A, 69, 70, 71, 68, 68A, 69, 70, 71, 72, 73, 73A, 74, 75, 76, 77, 78)		Aug 30 - Mar 31	See note 4, Page 79, Motorized Hunting Rule Applies, 45, 47, 52, 53, 56, 66, 66A, 69, 70, 72, 73, 75, 76, 77 & 78, See Pages 101 - 103	Nov 15 - Mar 31	Trapping open in Unit 45 only , on Private Land only , Units 38, 40, 41, 42, 46, 47, 52, 52A, 53, 54, 55, 56, 57, 63, 63A, 66, 66A, 68, 68A, 69, 70, 71, 72, 73, 73A, 74, 75, 76, 77 & 78 Closed

Note:

1. That portion of Unit 2 north of Highway 54 between Bayview and Spirit Lake, east of Highway 41 between Spirit Lake and Blanchard, and north of Blanchard Valley Road to the Idaho/Washington state line.
2. That portion of Unit 3 within the Little North Fork Coeur d' Alene River drainage.
3. The season in these zone(s) will remain open until the harvest limit is reached, or the season ends, whichever comes first.
4. Motorized vehicle use as an aid to hunting for gray wolves is restricted **August 30 through December 31** to established roadways open to motorized vehicle traffic capable of travel by full-sized automobiles - any motorized vehicle with a gross vehicle weight of 1,500 pounds. See Pages 101 - 103.
5. That portion of Unit 36 north of State Highway 21 and north of State Highway 75 from Stanley to the east border of Unit 36.

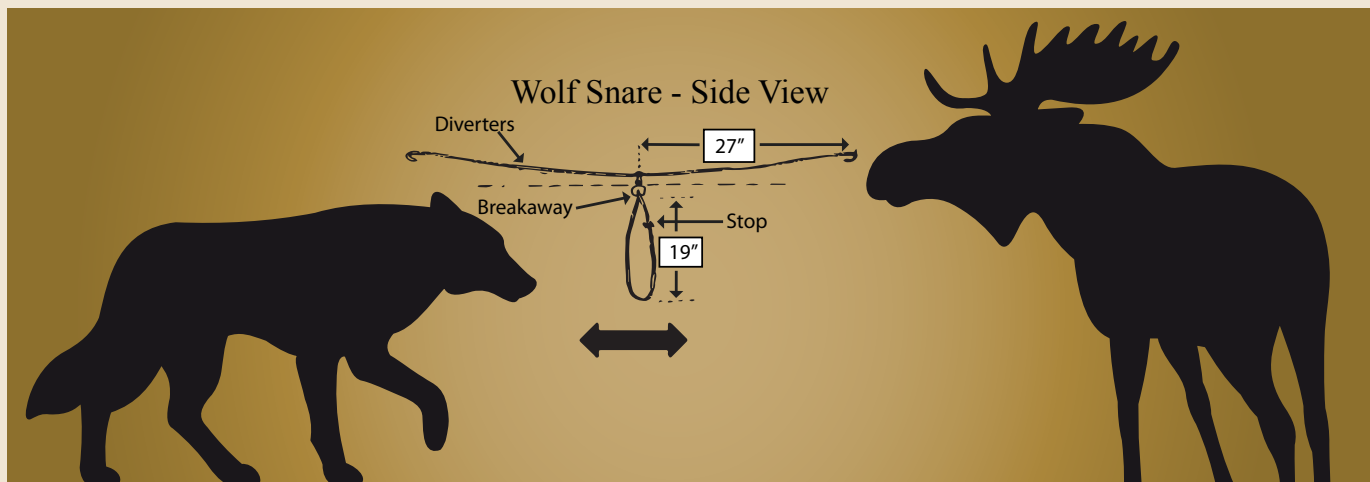
To find out whether a wolf zone is closed, call **1-855-648-5558** or visit fishandgame.idaho.gov Within 72 hours of harvesting a wolf, hunters and trappers must report it at **1-855-648-5558**. Hunters and trappers must present hide and skull to a Fish and Game regional office within 10 days.

ATTENTION WOLF TRAPPERS:

Any person wishing to trap wolves must first participate in an Idaho wolf trapper education/certification course. Stops and/or breakaway devices are required to be incorporated in the loop of the snare, and diverters are required on all wolf snares.

Research and experience has demonstrated that to operate effectively:

- **Snare Cable:** Snares should be constructed of at least 1x19, 7/64" cable; wolves **WILL** break lighter cable.
- **Diverters:** 11 gauge wire or heavier, 27 inches in length from each side of the snare, extending parallel to the ground on each side of the snare. A curl in at the end of the diverter wire will reduce the potential of eye injury to any passing elk or moose.
- **I.D. Tag:** Trapper I.D. tags must be affixed to all snares and traps.
- **Stops:** Stops should be set a minimum of 10 inches from the lock. In areas where hound hunters are, you can set your stop or breakaway stop at 14.5 inches.
- **Breakaway Devices:** Cut Berkshire lock - sawing through the lock with a hack saw so when tension is put on the cable, the cable can slip out of the lock; opens at approximately 700 lbs. S-hook breakaways attached to the lock, or other commercially available breakaway device which break at less than 800 lbs.
- **A partially cut through cable is not a breakaway device!**



A few precautions can help avoid conflicts with wolves and other large carnivores:

- After a big game animal is harvested, it is wise to retrieve and quarter the carcass immediately.
- If game meat must be left in the woods overnight, hang it if possible, or skin it and cover it with a breathable cloth game bag and leave articles of clothing at the site.
- Hang meat away from camp and stock so that if a large carnivore comes to investigate the scent, it does not scare stock.
- Hound hunters should look for recent wolf sign before turning dogs out on a bear or lion track.
- To prevent conflicts between hounds and wolves, some hound experts recommend that dogs be kept on a leash while tracking until the track gets fresh.
- Hounds should not be allowed to keep an animal treed for very long, as the sound of the hounds may attract wolves.

Other Important Information for Wolf Hunters and Trappers:

- Radio-collared wolves provide important information. Biologists rely on radio collars to track wolf movements, monitor wolf activity, assess population status and to help determine future hunting opportunity.
- Hunters and trappers are required to return any radio collar when they present the skull and hide to Fish and Game.
- To find out whether a wolf zone is closed, call **1-855-648-5558**.
- Within 72 hours of harvesting a wolf, hunters and trappers must report it at **1-855-648-5558**.
- Hunters and trappers must present hide and skull to a Fish and Game regional office within 10 days.
- Wolves and other canids are known carriers of a parasitic tapeworm that is linked to hydatid disease in humans. Hunters are encouraged to wear rubber gloves when skinning canids and avoid handling canid feces.

Understanding Predation Management in Idaho

To fulfill its statutory responsibility, Idaho Fish and Game must efficiently and effectively manage all fish and wildlife, including predator species, to preserve, protect and perpetuate fish and wildlife for hunting, fishing and trapping.

When predation keeps game populations below objectives, and regulated harvest of predators is not adequate, a more aggressive approach, guided by a predation management plan is sometimes necessary.

FIRST...

Idaho Fish and Game biologists study all the possible causes of declining game populations. They look at the quality and quantity of habitat, weather, the health and reproductive rate of the game animals, harvest levels and the impacts of predators. They then undertake the actions most likely to increase game numbers.

MANAGEMENT OPTIONS INCLUDE:

- **Habitat Improvement** – In some cases, habitat improvement involves prescribed fire, noxious weed control and vegetative plantings to generate new growth and provide food and cover for game animals. Fish and Game also collaborates with federal and state agencies, counties and private landowners to promote similar habitat improvement activities.
- **Changes in Hunting Seasons** – If hunting pressure is the cause of a population not meeting management goals, wildlife managers may alter seasons or impose harvest quotas. This includes managing hunters using OHV's during hunting season to improve habitat effectiveness and reduce harvest vulnerability.
- **Liberalize Trapping/Hunting Regulations of Predators** – Hunting and trapping are important tools to manage predation. Where excess pressure from predators keeps game populations below objectives, managers offer longer seasons, higher bag limits, reduced tag prices or more opportunities to hunt or trap predators.

THEN...

When evidence shows predators are limiting game populations, a predator management plan is developed and implemented.

DIFFERENT STRATEGIES:

A single management approach is unlikely to satisfy everyone. Fish and Game uses different strategies in different parts of the state to provide for different values, demands, and circumstances. Fish and Game uses regulated hunting, fishing, and trapping when feasible to resolve predator conflicts with people or reduce their impacts on game populations. Some situations, however, call for more direct control methods.

Predation control actions are used when regulated hunting, fishing, or trapping is not enough to reduce predator populations to resolve conflicts with people or reduce impacts on game populations.

PREDATOR CONTROL ACTIONS MAY OCCUR:

- In areas where game populations are fragmented or isolated, or where introductions or transplants of potentially vulnerable wildlife have occurred.
- In areas where evidence shows predation to be a significant factor in game populations not meeting management goals.
- In wildlife management areas, especially those managed primarily to provide for production of species, critical winter range, and areas acquired and managed to help mitigate for wildlife losses elsewhere.

NON-LETHAL ACTIONS USUALLY NOT FEASIBLE

A variety of nonlethal predator controls have been tried, including capturing and relocating bears, mountain lions and wolves. Despite some successes, removing live animals for release in habitats already occupied by the same species often creates additional problems. These and other non-lethal techniques are difficult and generally ineffective when predators are limiting game populations. Fish and Game considers the costs and potential benefits before starting a control action.

THE GOAL:

Reduction Not Elimination

Predator control often involves removal of animals, but the intent is not to eliminate predators. The long-term intent is to reduce predator numbers enough to allow increased game numbers and harvest opportunities, and to maintain viable populations of all wildlife.

Controversy will always surround predation management. It is complex and involves balancing diverse interests using biological and social considerations. Left unmanaged, predators and prey are likely to cause private property damage and have significant economic impacts. Unmanaged wildlife populations can also result in increased disease transmission, declines in habitat, food sources, and reduction of hunting, fishing and trapping opportunities.

LONG-TERM WILDLIFE HEALTH:

Fish and Game has a 75-year history of managing predator and game species. Populations of bears, mountain lions, wolves, mule and white-tailed deer, elk, moose, turkeys, and many other species are higher today than 75 years ago. The agency will continue to manage all Idaho's wildlife, with healthy populations, sustainable harvests and conservation as our guiding principles.

Predation management actions will be based on the best available scientific information. Predators will be managed to minimize adverse impacts on other wildlife populations, minimize conflicts, and to ensure Idahoans continue to have healthy game populations for hunting, fishing, trapping and viewing.



Want to know more? Visit the Idaho Fish and Game website @ fishandgame.idaho.gov

