

Beaverhead Mountains Section

This area includes the highest mountain ranges in the state, and landscapes are characterized by sharp alpine ridges, cirques, and glacial valleys at higher elevations contrasting with wide, dry valleys, alluvial terraces, and flood plains at lower elevations. Intermittent streams are common, indicating the arid nature of the area. Lakes occur in glaciated areas at higher elevations. Major rivers include the Lemhi, Beaverhead, Big Lost, and Little Lost Rivers. Elevation ranges from 1100–3860 m (3600–12,662 ft). Mountain soils are generally shallow to moderately deep loam and sandy containing rock fragments. Valley soils are moderately deep loam and clay.

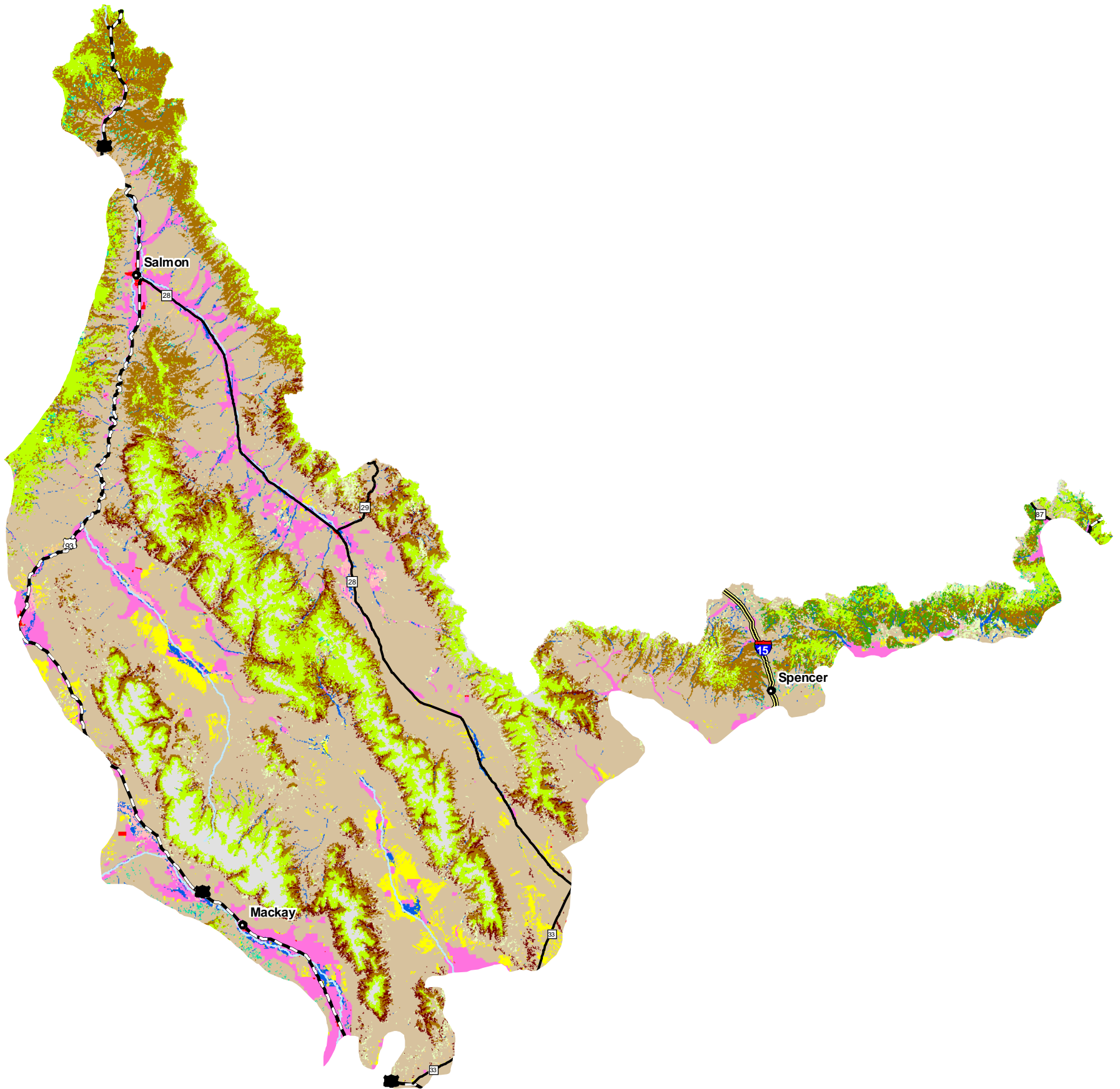
Annual precipitation ranges from 25–127 cm (10–50 in) with most precipitation falling as snow in the fall, winter, and spring. Winters are cold, and growing season conditions are dry. Soil moisture is not sufficient for tree growth on some south and west aspects below timberline, and grasslands often extend from the valley floors to the mountain tops. Average annual temperature is 2–8°C (36–46°F). The growing season ranges from 45–100 days.

Communities occur primarily at lower elevations along rivers and are sparse and small. Livestock grazing is the dominant land use. Timber harvesting, mining, and recreation are also important land uses.

Table 1. Beaverhead Mountains land use and land ownership.

Land use	Area (ha)	Area (ac)	Percent
Dryland Agriculture	938	2319	<1
Timberland	512,144	1,265,530	31
Irrigated–Gravity Flow	79,118	195,504	5
Irrigated–Sprinkler	68,807	170,026	4
Rangeland	971,166	2,399,794	59
Riparian	2925	7227	<1
Urban	7311	18,067	<1
Water	589	1454	<1
Total	1,642,998	4,059,921	100
Land ownership	Area (ha)	Area (ac)	Percent
USDI Bureau of Land Management	591,144	1,460,742	36
US Department of Energy	18,327	45,287	1
USDA Forest Service	780,309	1,928,178	47
Open water	1493	3689	<1
Private	210,303	519,668	13
State of Idaho	41,667	102,960	3
Total	1,643,243	4,060,525	100

Beaverhead Mountains Ecological Section Habitats



Habitats

- Alpine
- Arableland
- Dry Conifer Forest
- Dry Grassland
- Dune, Canyon, and Rockland
- Mesic Deciduous Shrubland
- Non-native Herbaceous

- Northern Mesic Conifer Forest
- Open Water
- Riparian Woodland
- Southern Wetland
- Southern Woodland
- Southern Xeric Shrubland and Steppe
- Subalpine Forest
- Subalpine Grassland

- Upland Deciduous Forest
- Urban

Town Population

- 0 - 20,000
- 20,001 - 200,000

Highways

- Interstate
- U.S. Highway
- State Route

I D A H O



25 July 2005
Idaho Conservation Data Center, Idaho Department of Fish and Game.

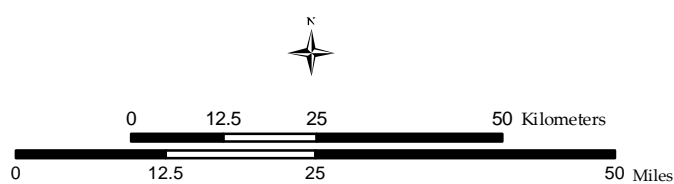


Figure 17. Beaverhead Mountains habitats.

Species of Greatest Conservation Need in the Beaverhead Mountains

Lampreys

Pacific Lamprey *Lampetra tridentata*

Fishes

Yellowstone Cutthroat Trout *Oncorhynchus clarkii bouvieri*

Westslope Cutthroat Trout *Oncorhynchus clarkii lewisi*

Steelhead (Snake River basin) *Oncorhynchus mykiss gairdneri*^a

Sockeye Salmon (Snake River) *Oncorhynchus nerka*^a

Chinook Salmon (Snake River spring/summer–run) *Oncorhynchus tshawytscha*^a

Bull Trout *Salvelinus confluentus*^a

Amphibians

Northern Leopard Frog *Rana pipiens*

Birds

Trumpeter Swan *Cygnus buccinator*

Northern Pintail *Anas acuta*

Lesser Scaup *Aythya affinis*

Harlequin Duck *Histrionicus histrionicus*

Hooded Merganser *Lophodytes cucullatus*

Greater Sage–Grouse *Centrocercus urophasianus*

Sharp–tailed Grouse *Tympanuchus phasianellus*

Red–necked Grebe *Podiceps grisegena*

Western Grebe *Aechmophorus occidentalis*

Black–crowned Night–Heron *Nycticorax nycticorax*

White–faced Ibis *Plegadis chihi*

Bald Eagle *Haliaeetus leucocephalus*

Swainson’s Hawk *Buteo swainsoni*

Ferruginous Hawk *Buteo regalis*

Merlin *Falco columbarius*

Peregrine Falcon *Falco peregrinus*

Sandhill Crane *Grus canadensis*

Long–billed Curlew *Numenius americanus*

Wilson’s Phalarope *Phalaropus tricolor*

Franklin’s Gull *Larus pipixcan*

California Gull *Larus californicus*

Caspian Tern *Sterna caspia*

Forster’s Tern *Sterna forsteri*

Black Tern *Chlidonias niger*

Yellow–billed Cuckoo *Coccyzus americanus*

Flammulated Owl *Otus flammeolus*

Burrowing Owl *Athene cunicularia*

Short–eared Owl *Asio flammeus*

Boreal Owl *Aegolius funereus*

Lewis's Woodpecker *Melanerpes lewis*
American Three-toed Woodpecker *Picoides dorsalis*
Pygmy Nuthatch *Sitta pygmaea*
Brewer's Sparrow *Spizella breweri*
Grasshopper Sparrow *Ammodramus savannarum*
Black Rosy-Finch *Leucosticte atrata*^a
Lesser Goldfinch *Carduelis psaltria*

Mammals

Merriam's Shrew *Sorex merriami*
Dwarf Shrew *Sorex nanus*
California Myotis *Myotis californicus*
Townsend's Big-eared Bat *Corynorhinus townsendii*
Pygmy Rabbit *Brachylagus idahoensis*^a
Red-tailed Chipmunk *Neotamias ruficaudus*
Wyoming Ground Squirrel *Spermophilus elegans*^a
Great Basin Ground Squirrel *Spermophilus mollis*
Idaho Pocket Gopher *Thomomys idahoensis*
Townsend's Pocket Gopher *Thomomys townsendii*
Gray Wolf *Canis lupus*
Kit Fox *Vulpes macrotis*
Grizzly or Brown Bear *Ursus arctos*
Fisher *Martes pennanti*
Wolverine *Gulo gulo*
Canada Lynx *Lynx canadensis*
Mountain Goat *Oreamnos americanus*

Bivalves

Western Pearlshell *Margaritifera falcata*^a

Gastropods

Rustic Pondsail *Stagnicola hinkleyi*^a

Insects

A Mayfly *Caurinella idahoensis*
A Mayfly *Ameletus sparsatus*
A Mayfly *Centroptilum selanderorum*
A Mayfly *Cinygma dimicki*^a
Sagebrush Spur-throat Grasshopper *Melanoplus artemesiae*^a
A Spur-throat Grasshopper *Melanoplus idaho*^a
A Spur-throat Grasshopper *Melanoplus lemhiensis*^a
A Spur-throat Grasshopper *Melanoplus papyraedus*^a
A Spur-throat Grasshopper *Melanoplus salmonis*^a
A Spur-throat Grasshopper *Melanoplus trigeminus*^a
Idaho Point-headed Grasshopper *Acrolophitus pulchellus*^a
A Grasshopper *Argiacris amissuli*^a

A Grasshopper *Argiacris militaris*
 A Grasshopper *Barracris petraea*^a
 A Spring Stonefly *Malenka tina*
 A Tiger Beetle *Cicindela plutonica*
 An Agapetus Caddisfly *Agapetus montanus*^a
 Relict Fritillary *Boloria kriemhild*
 Gillette's Checkerspot *Euphydryas gillettii*

^a Species for which the Beaverhead Mountains represents a significant portion of their Idaho range.

Habitats in the Beaverhead Mountains

Table 2. Beaverhead Mountains habitats.

Habitat	Area (km ²)	Area (ac)	Percent
Urban	25	6180	<1
Arableland	1013	250,419	6
Non–native Herbaceous	387	95,662	2
Upland Deciduous Forest	174	42,956	1
Southern Woodland	400	98,851	2
Dry Conifer Forest	2280	563,415	14
Subalpine Forest	2342	578,464	14
Mesic Deciduous Shrubland	71	17,427	<1
Southern Xeric Shrubland and Steppe	8192	2,024,317	50
Dry Grassland	39	9696	<1
Subalpine Grassland	372	91,889	2
Alpine	707	174,708	4
Open Water	10	2353	<1
Southern Wetland	80	19,778	<1
Riparian Woodland	327	80,832	2
Total	16,419	4,056,947	100

Priority Habitats and Associated Vertebrate Species in the Beaverhead Mountains

Arableland

Lampreys

Pacific Lamprey *Lampetra tridentata*

Fishes

Sockeye Salmon (Snake River) *Oncorhynchus nerka*

Chinook Salmon (Snake River spring/summer–run) *Oncorhynchus tshawytscha*

Amphibians

Northern Leopard Frog *Rana pipiens*

Birds

Northern Pintail *Anas acuta*

Greater Sage-Grouse *Centrocercus urophasianus*

Black-crowned Night-Heron *Nycticorax nycticorax*

White-faced Ibis *Plegadis chihi*

Black-necked Stilt *Himantopus mexicanus*

Long-billed Curlew *Numenius americanus*

Franklin's Gull *Larus pipixcan*

California Gull *Larus californicus*

Forster's Tern *Sterna forsteri*

Mammals

Wyoming Ground Squirrel *Spermophilus elegans*

Townsend's Pocket Gopher *Thomomys townsendii*

Dry Conifer Forest

Lampreys

Pacific Lamprey *Lampetra tridentata*

Fishes

Yellowstone Cutthroat Trout *Oncorhynchus clarkii bouvieri*

Westslope Cutthroat Trout *Oncorhynchus clarkii lewisi*

Steelhead (Snake River basin) *Oncorhynchus mykiss gairdneri*

Sockeye Salmon (Snake River) *Oncorhynchus nerka*

Chinook Salmon (Snake River spring/summer-run) *Oncorhynchus tshawytscha*

Bull Trout *Salvelinus confluentus*

Birds

Harlequin Duck *Histrionicus histrionicus*

Bald Eagle *Haliaeetus leucocephalus*

Merlin *Falco columbarius*

Peregrine Falcon *Falco peregrinus*

Boreal Owl *Aegolius funereus*

American Three-toed Woodpecker *Picoides dorsalis*

Pygmy Nuthatch *Sitta pygmaea*

Mammals

Townsend's Big-eared Bat *Corynorhinus townsendii*

Red-tailed Chipmunk *Neotamias ruficaudus*

Gray Wolf *Canis lupus*

Grizzly or Brown Bear *Ursus arctos*
Fisher *Martes pennanti*
Wolverine *Gulo gulo*
Canada Lynx *Lynx canadensis*
Mountain Goat *Oreamnos americanus*

Subalpine Forest

Fishes

Yellowstone Cutthroat Trout *Oncorhynchus clarkii bouvieri*

Birds

Harlequin Duck *Histrionicus histrionicus*
Bald Eagle *Haliaeetus leucocephalus*
Boreal Owl *Aegolius funereus*
American Three-toed Woodpecker *Picoides dorsalis*
Pygmy Nuthatch *Sitta pygmaea*
Black Rosy-Finch *Leucosticte atrata*

Mammals

Dwarf Shrew *Sorex nanus*
Red-tailed Chipmunk *Neotamias ruficaudus*
Gray Wolf *Canis lupus*
Grizzly or Brown Bear *Ursus arctos*
Fisher *Martes pennanti*
Wolverine *Gulo gulo*
Canada Lynx *Lynx canadensis*
Mountain Goat *Oreamnos americanus*

Southern Xeric Shrubland and Steppe

Lampreys

Pacific Lamprey *Lampetra tridentata*

Fishes

Yellowstone Cutthroat Trout *Oncorhynchus clarkii bouvieri*
Westslope Cutthroat Trout *Oncorhynchus clarkii lewisi*
Steelhead (Snake River basin) *Oncorhynchus mykiss gairdneri*
Sockeye Salmon (Snake River) *Oncorhynchus nerka*
Chinook Salmon (Snake River spring/summer-run) *Oncorhynchus tshawytscha*
Bull Trout *Salvelinus confluentus*

Amphibians

Northern Leopard Frog *Rana pipiens*

Birds

Hooded Merganser *Lophodytes cucullatus*
Greater Sage-Grouse *Centrocercus urophasianus*
Sharp-tailed Grouse *Tympanuchus phasianellus*
Merlin *Falco columbarius*
Peregrine Falcon *Falco peregrinus*
Long-billed Curlew *Numenius americanus*
Burrowing Owl *Athene cunicularia*
Grasshopper Sparrow *Ammodramus savannarum*
Lesser Goldfinch *Carduelis psaltria*

Mammals

Merriam's Shrew *Sorex merriami*
Townsend's Big-eared Bat *Corynorhinus townsendii*
Pygmy Rabbit *Brachylagus idahoensis*
Wyoming Ground Squirrel *Spermophilus elegans*
Great Basin Ground Squirrel *Spermophilus mollis*
Idaho Pocket Gopher *Thomomys idahoensis*
Grizzly or Brown Bear *Ursus arctos*