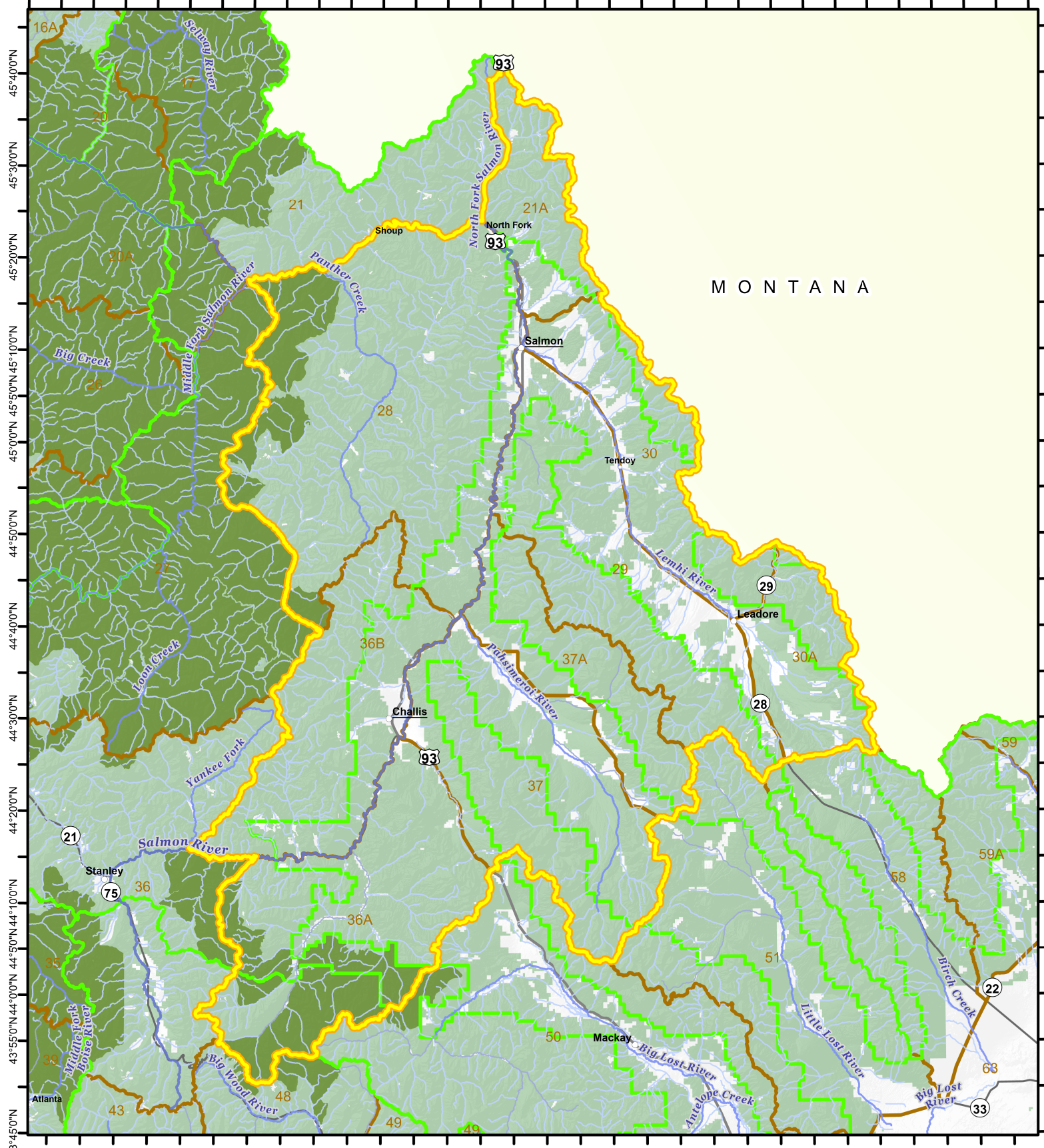
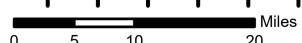


115°10'0"W 115°0'0"W 114°50'0"W 114°40'0"W 114°30'0"W 114°20'0"W 114°10'0"W 114°0'0"W 113°50'0"W 113°40'0"W 113°30'0"W 113°20'0"W 113°10'0"W 113°0'0"W 112°50'0"W 112°40'0"W



MONTANA







1:1,012,000 1 inch equals 16 miles

NOTE: This is a georeference PDF map. You can use the Avenza PDF Maps app (avenza.com/pdf-maps) to interact with the map to view your location, record GPS tracks, add placemarks, and find places.

Map is for general reference only. Public or Private land designation is not an indication of hunter access. Official boundary descriptions are in the regulation publications and online at <https://idfg.idaho.gov>



-  Hunt Area Boundary
-  Area With Further Restrictions
-  7.5 Min. Topo Name (1:24,000)
-  National Forest Boundaries
-  Game Management Units

- Land Management**
-  Public Land
 -  Tribal Land
 -  Private Land - permission required
 -  Designated Wilderness

