
Spotted Bat

Euderma maculatum

Mammalia — Chiroptera — Vespertilionidae

CONSERVATION STATUS / CLASSIFICATION

Rangewide: Apparently secure (G4)
Statewide: Vulnerable (S3)
ESA: No status
USFS: Region 1: No status; Region 4: Sensitive
BLM: Regional/State imperiled (Type 3)
IDFG: Protected nongame

BASIS FOR INCLUSION

Lack of abundance and population trend information; limited habitat information.

TAXONOMY

Euderma maculatum is the only species in the genus *Euderma*. No subspecies are recognized.

DISTRIBUTION AND ABUNDANCE

This bat occurs in western North America from southern British Columbia south to central Mexico and east to southern Montana and eastern Texas. In Idaho, the species occurs predominately in the deep, narrow canyons in the southwest, but scattered records have been reported in the south-central part of the state, as well as in the Salmon River canyon in central Idaho.

POPULATION TREND

Population trend is unknown.

HABITAT AND ECOLOGY

This species characteristically occurs in association with xeric and riparian habitats in deep, narrow canyons where massive cliffs predominate. Individuals roost solitarily in cracks or crevices in rocky outcrops and cliffs. Dominant vegetation at Idaho sites includes sagebrush, juniper, mountain mahogany, and cottonwood. Elsewhere this species has been found in ponderosa pine forests. No data are available to determine habitat and roost requirements during hibernation and maternity periods.

ISSUES

The primary issue facing this species is the lack of knowledge on abundance, population trends, and habitat requirements. Human disturbances, such as reservoir impoundments and rock climbing, could affect roost sites.

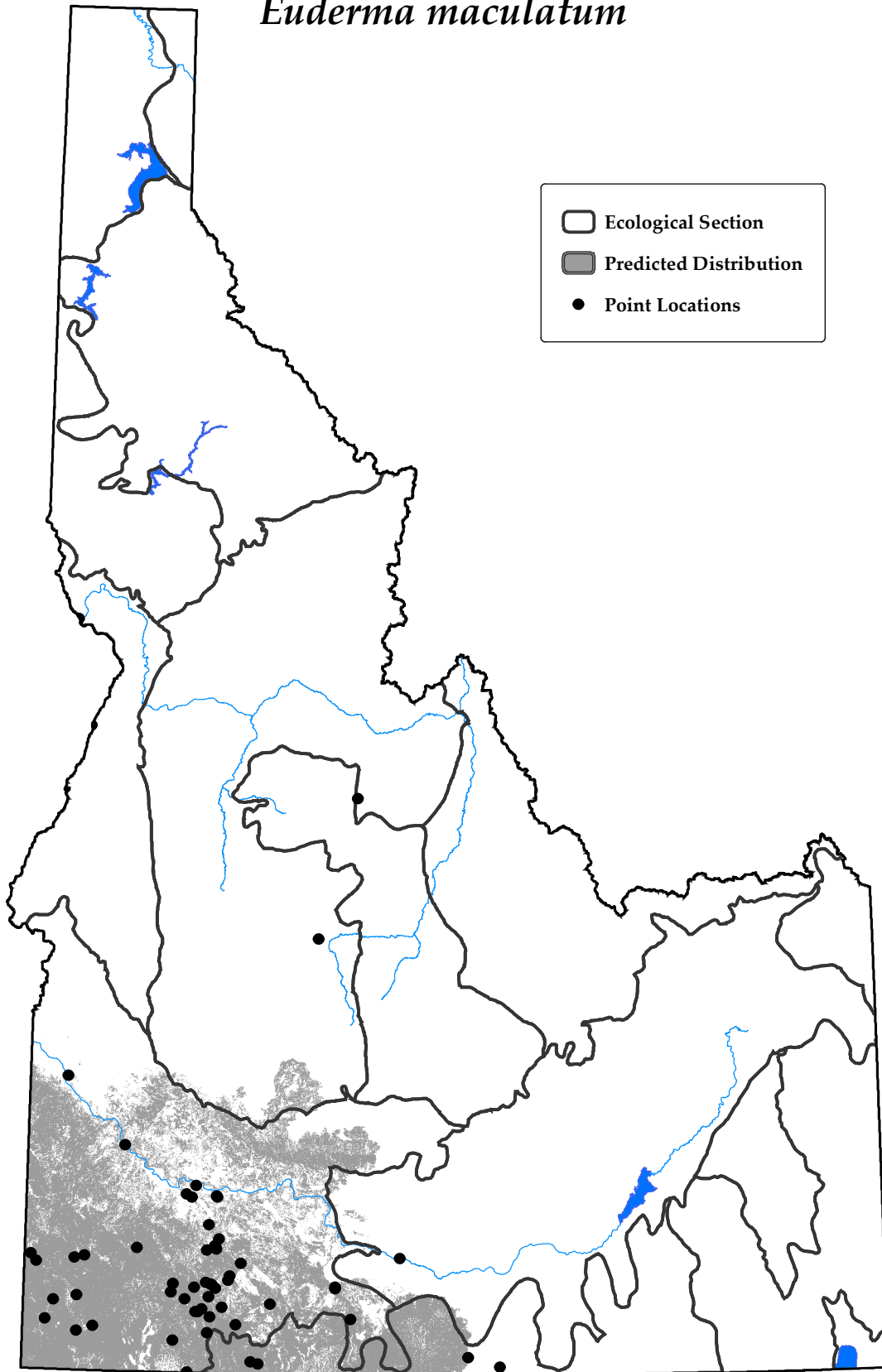
RECOMMENDED ACTIONS

Document state population trends using summertime acoustic surveys.

Plan recovery actions by gathering data on roost characteristics and requirements. Work with land managers to identify roost sites found in cliffs and protect these sites from disturbance.

Spotted Bat

Euderma maculatum



Map created on September 23, 2005
and prepared by Idaho Conservation Data Center.
Sources: Point data are from Idaho Conservation Data Center,
Idaho Department of Fish and Game (2005). Predicted distribution
is from the Wildlife Habitat Relationships Models (WHR),
A Gap Analysis of Idaho: Final Report. Idaho Cooperative Fish
and Wildlife Research Unit, Moscow, ID (Scott et al. 2002).
Predicted distribution is approximate (for more information, go to
http://www.wildlife.uidaho.edu/idgap/idgap_report.asp).

