
Pygmy Shrew

Sorex hoyi

Mammalia — Insectivora — Soricidae

CONSERVATION STATUS / CLASSIFICATION

Rangewide: Secure (G5)
Statewide: Critically imperiled (S1)
ESA: No status
USFS: Region 1: No status; Region 4: No status
BLM: No status
IDFG: Unprotected wildlife

BASIS FOR INCLUSION

Lack of essential information pertaining to status in Idaho.

TAXONOMY

This species was formerly in the genus *Microsorex*, and this arrangement continues to be recognized by some authorities. The subspecies occurring in Idaho is *S. hoyi hoyi*.

DISTRIBUTION AND ABUNDANCE

The pygmy shrew occurs in the northern U. S., much of Canada and Alaska. Disjunct populations occur in Colorado and the eastern U. S. In Idaho, the species has been documented in few, scattered localities north of the Clearwater River (Foresman 1986, Groves 1994).

POPULATION TREND

No trend data are available for Idaho.

HABITAT AND ECOLOGY

The species is largely insectivorous. Nests are often in decaying logs or among root masses (Clark et al. 1989). Sphagnum moss, wet soil, mammalian tunnel networks, insect tunnel networks, leaf litter, root systems, and stumps are often present (Long 1974). This species is generally associated with boreal forest and riparian habitats (Long 1974). Habitat in Idaho includes mesic and subalpine coniferous forests. Dominant tree species include western red-cedar, western hemlock, Engelmann's Spruce, grand fir, and subalpine fir (Groves 1994).

ISSUES

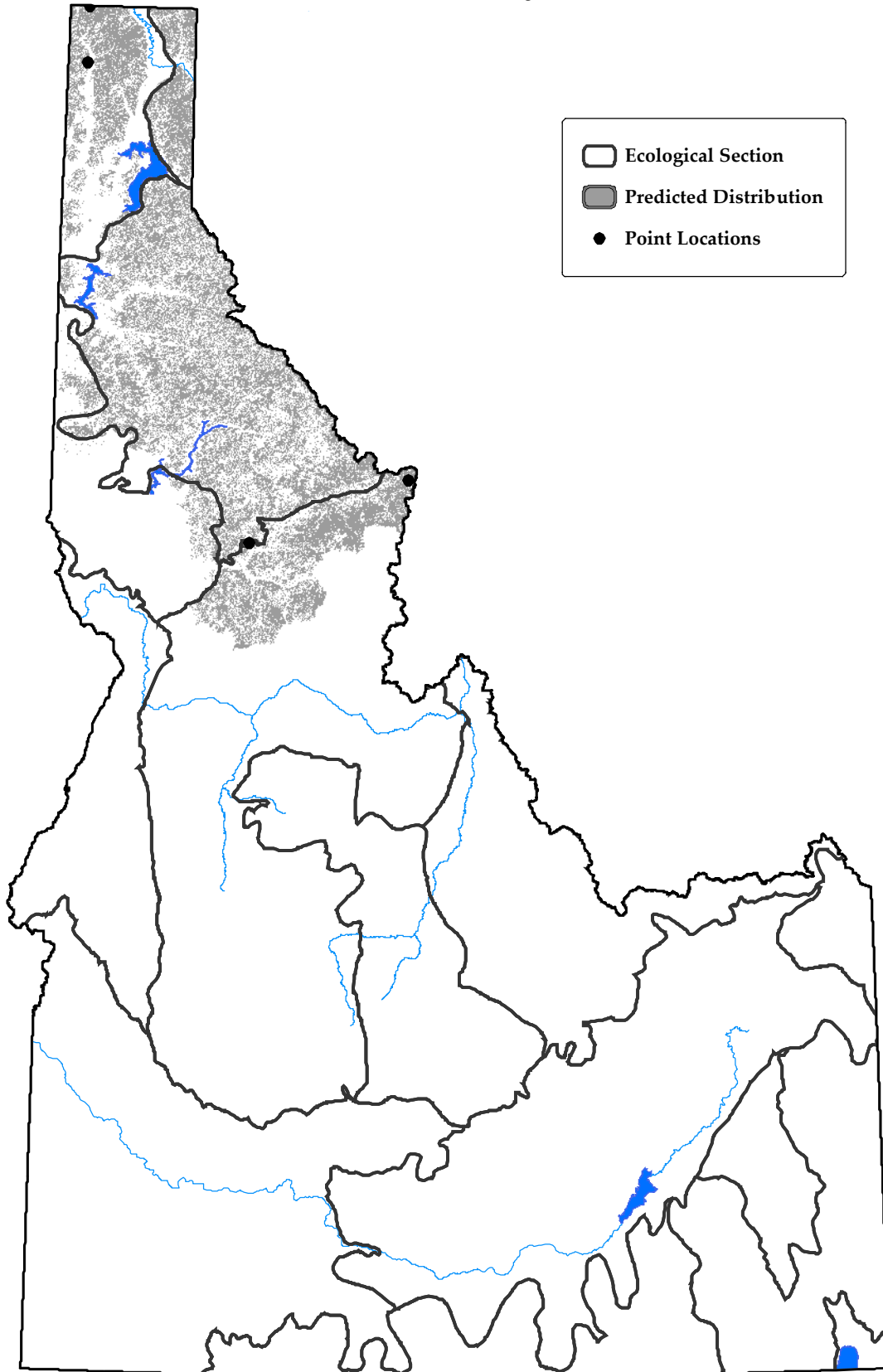
An understanding of the status and ecology of this species has been limited by sampling effort. The apparent rarity of this species may be indicative of small populations or may be an artifact of past sampling effort. The lack of information regarding the distribution and habitat requirements has precluded the consideration of this species in resource management decisions.

RECOMMENDED ACTIONS

Surveys are needed to determine the distribution, current status, and habitat associations of populations. Surveys are needed throughout the potential range.

Pygmy Shrew

Sorex hoyi



Map created on September 28, 2005
and prepared by Idaho Conservation Data Center.
Sources: Point data are from Idaho Conservation Data Center,
Idaho Department of Fish and Game (2005). Predicted distribution
is from the Wildlife Habitat Relationships Models (WHR),
A Gap Analysis of Idaho: Final Report. Idaho Cooperative Fish
and Wildlife Research Unit, Moscow, ID (Scott et al. 2002).
Predicted distribution is approximate (for more information, go to
http://www.wildlife.uidaho.edu/idgap/idgap_report.asp).

