
A Spur-throat Grasshopper

Melanoplus digitifer

Insecta — Orthoptera — Acrididae

CONSERVATION STATUS / CLASSIFICATION

Rangewide: Imperiled/Vulnerable (G2G3)
Statewide: Imperiled (S2)
ESA: No status
USFS: Region 1: No status; Region 4: No status
BLM: No status
IDFG: Not classified

BASIS FOR INCLUSION

Lack of essential information pertaining to status.

TAXONOMY

The taxon *digitifer* was at one time considered to be a subspecies of the indigene spur-throated grasshopper (*Melanoplus indigenus*) (see, e.g., Hebard 1936).

DISTRIBUTION AND ABUNDANCE

This grasshopper has been reported to occur at localities in Oregon and Idaho and perhaps also in Washington and Montana. In Idaho, the species has been found in Adams, Butte, Caribou, Clearwater, Custer, Idaho, and Valley counties.

POPULATION TREND

No data are available to suggest population trend. Specimens were last collected during 1961.

HABITAT AND ECOLOGY

Specimens have been collected between the elevations 1160-1830 m. Habitat affiliations are not documented for this species.

ISSUES

Specific threats to this taxon are unknown. Threats to grasshoppers include pesticides and habitat modification. Although conversion of native habitat to agricultural uses has benefited some grasshopper species, there are no data to suggest that agriculture has benefited this species.

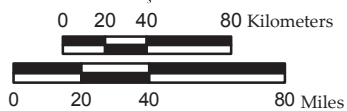
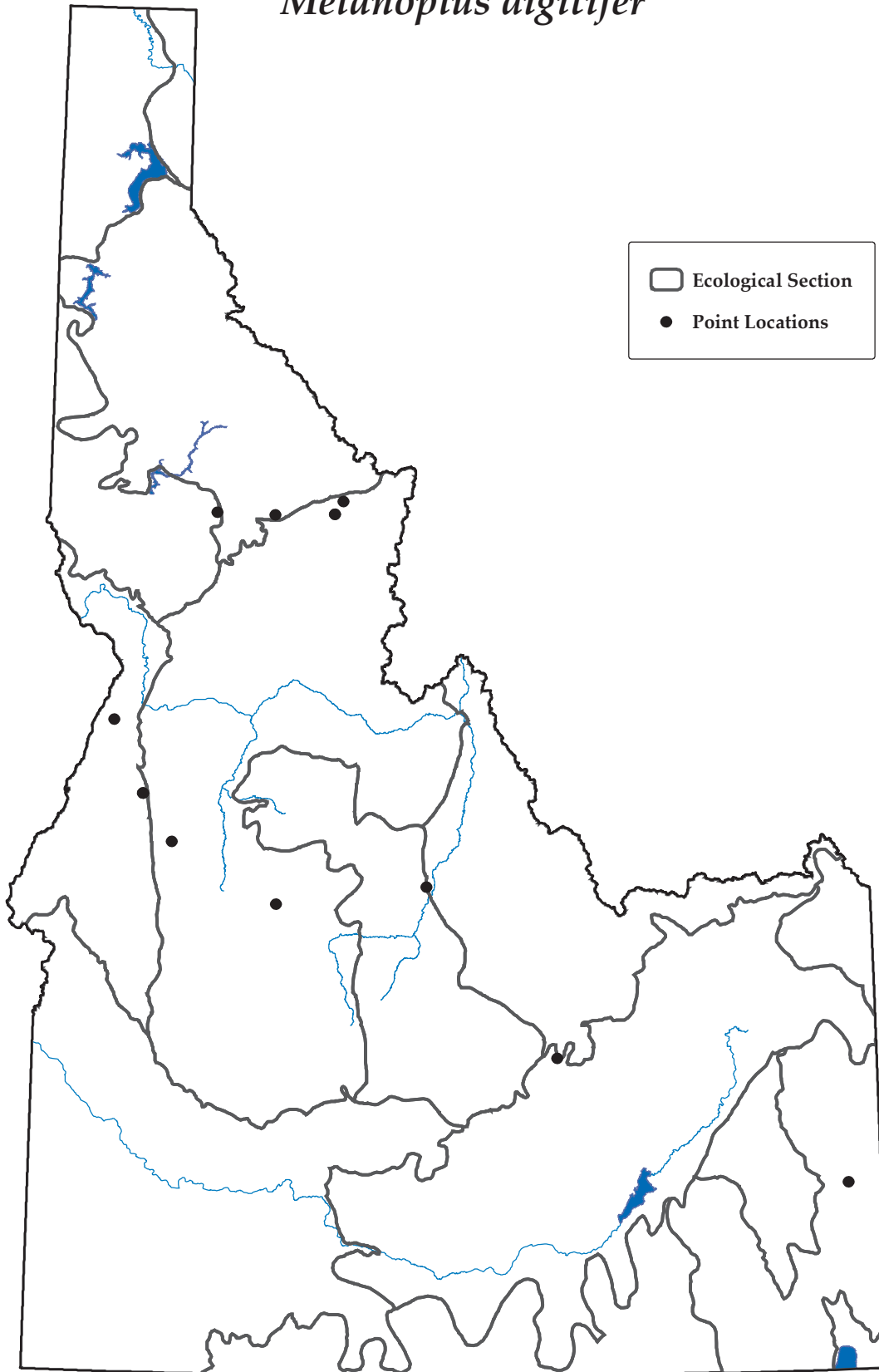
RECOMMENDED ACTIONS

Surveys are needed to determine the current status of populations; no specimens have been collected since 1961. Additional taxonomic study of this species, particularly as it relates to *Melanoplus indigenus*, may be warranted. Hebard (1937) wrote that "it is this individual and environmental variation coupled with the close general similarity of the species and the abundance of races which makes the Indigenes Group one of the most

difficult. This is aggravated by the fact that material is yet to be secured in many large areas where the Group is unquestionably present.”

A Spur-throat Grasshopper

Melanoplus digitifer



2 August 2005
Point data are from Idaho Conservation Data Center,
Idaho Department of Fish and Game.

